

Figure S1: Typical example of a cross-section optical microscopy image used to estimate the porosity of coatings. The sample shown was a Ti coating prepared by the SWIS technique using Ti powder with $D_{50} = 73 \mu\text{m}$. The white areas are the Ti particles, while the red area are the pores.

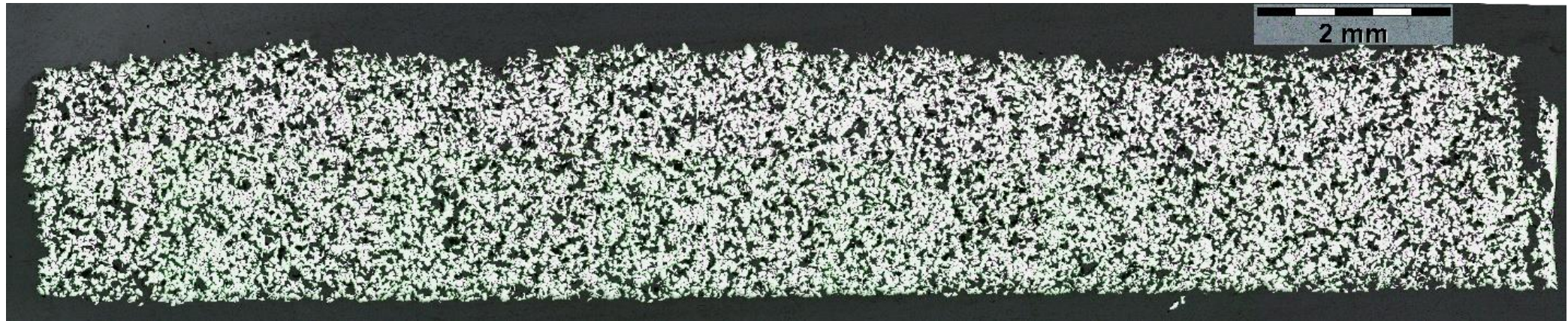


Figure S2: Ti + Cu with 30 wt.% Cu after leaching in HNO₃. All Cu particles are dissolved from the coating. Also, the coating is detached from the substrate.