

Figure 5. Section of the NOESY spectrum of 19-*epi*-DTX2 showing the correlation between H18 and H23 (A) and of DTX2 showing the absence of a correlation (B). Geometrical optimizations of 3D chemical structures for 19-*epi*-DTX2 (C) and DTX2 (D).

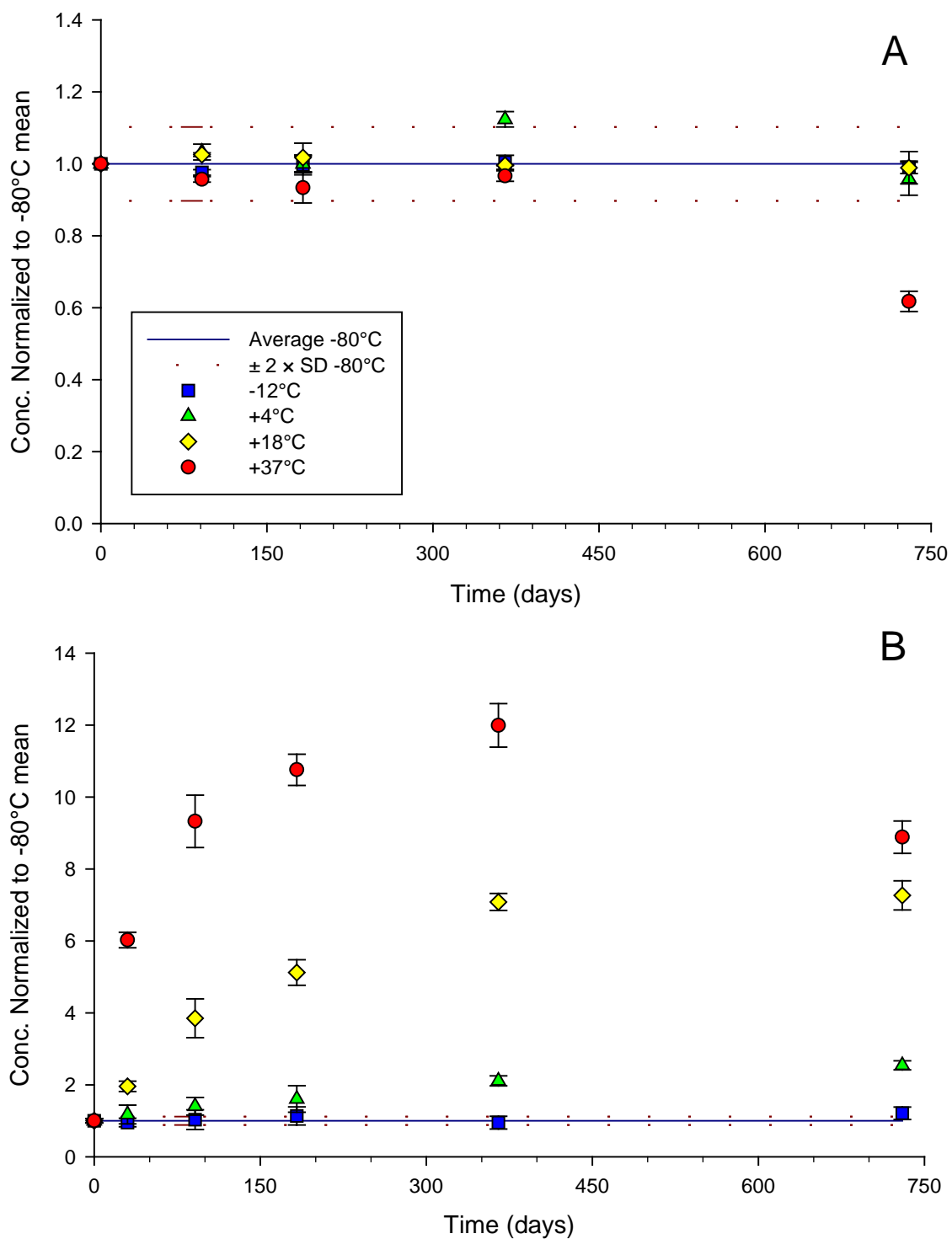


Figure 6. Stability study results for CRM-OA showing stability when stored at recommended conditions of -12°C and degradation at the stress condition of $+37^{\circ}\text{C}$ (A). Increase in an isomeric degradation product (19-*epi*-DTX2) detected at temperatures $>-12^{\circ}\text{C}$ in CRM-DTX2 (B).