

Supplementary material for

Estimation of instantaneous peak flows in Canadian rivers: An evaluation of conventional, nonlinear regression, and machine learning methods

M.N. Khaliq^{1,*}

¹National Research Council Canada, Ocean Coastal and River Engineering Research Centre
Ottawa, ON K1A 0R6, Canada

Muhammad.Khaliq@nrc-cnrc.gc.ca

Tel: 613-993-6656

*Corresponding author

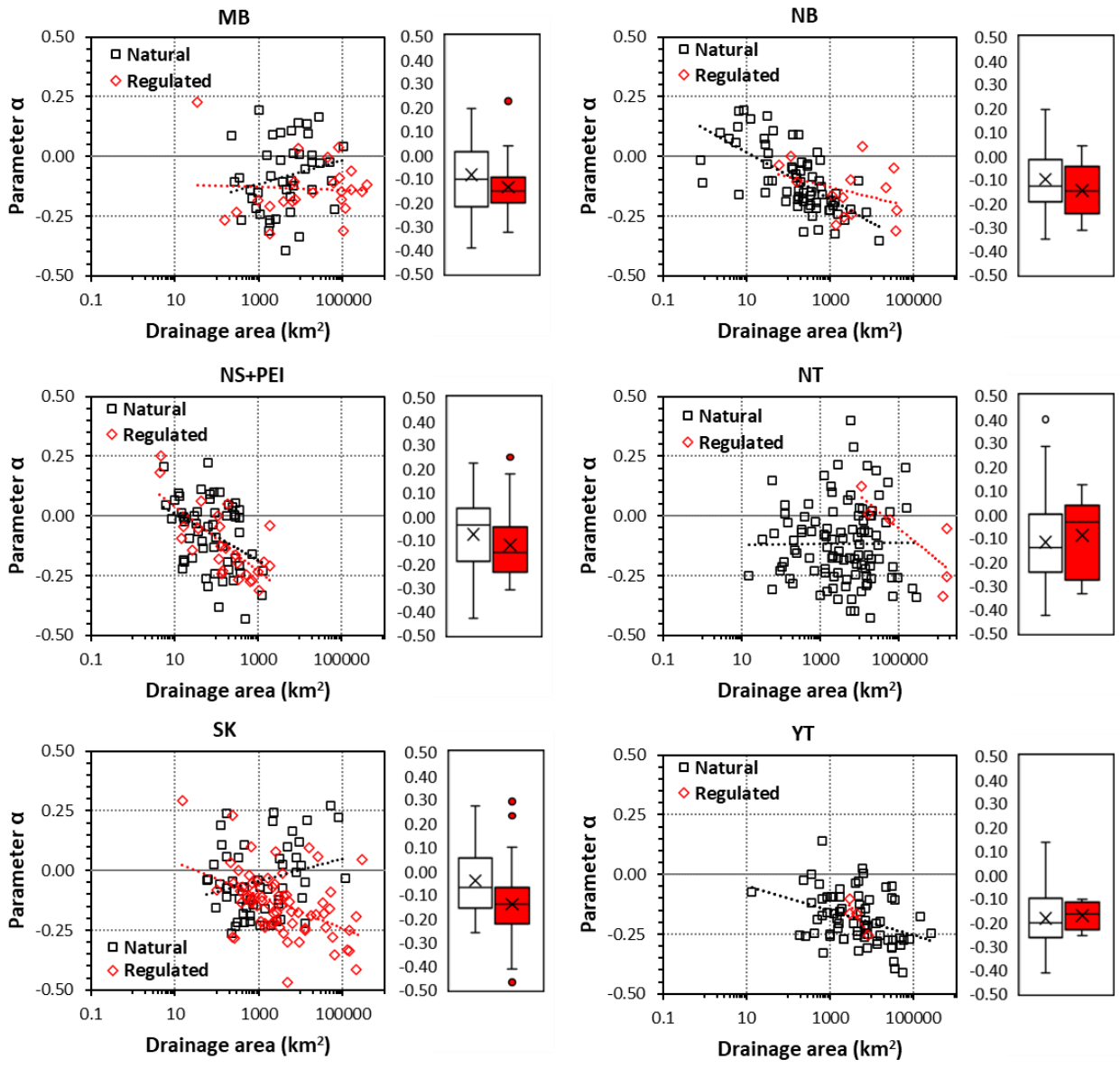


Figure S1. Same as for Figure 3, but for the remaining P&Ts.

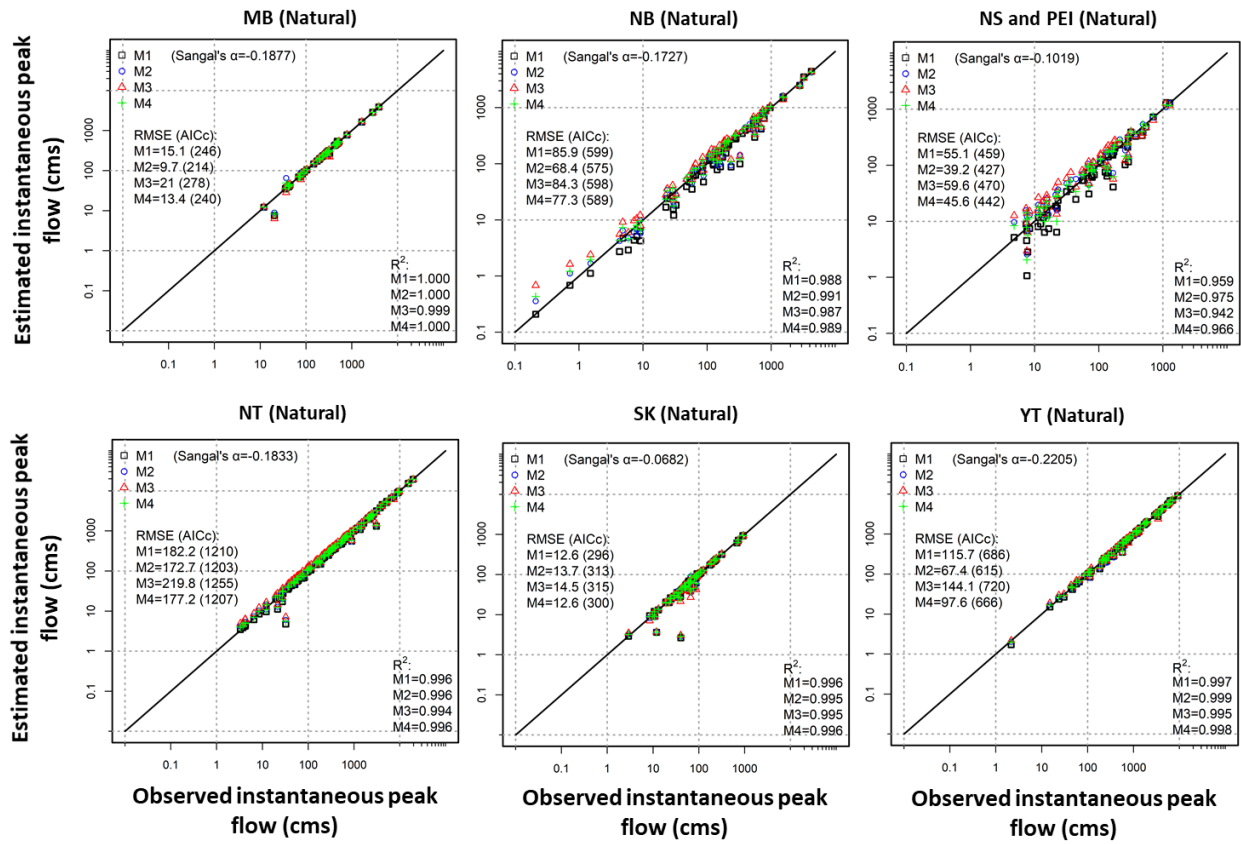


Figure S2. Same as for Figure 4, but for the remaining P&Ts.

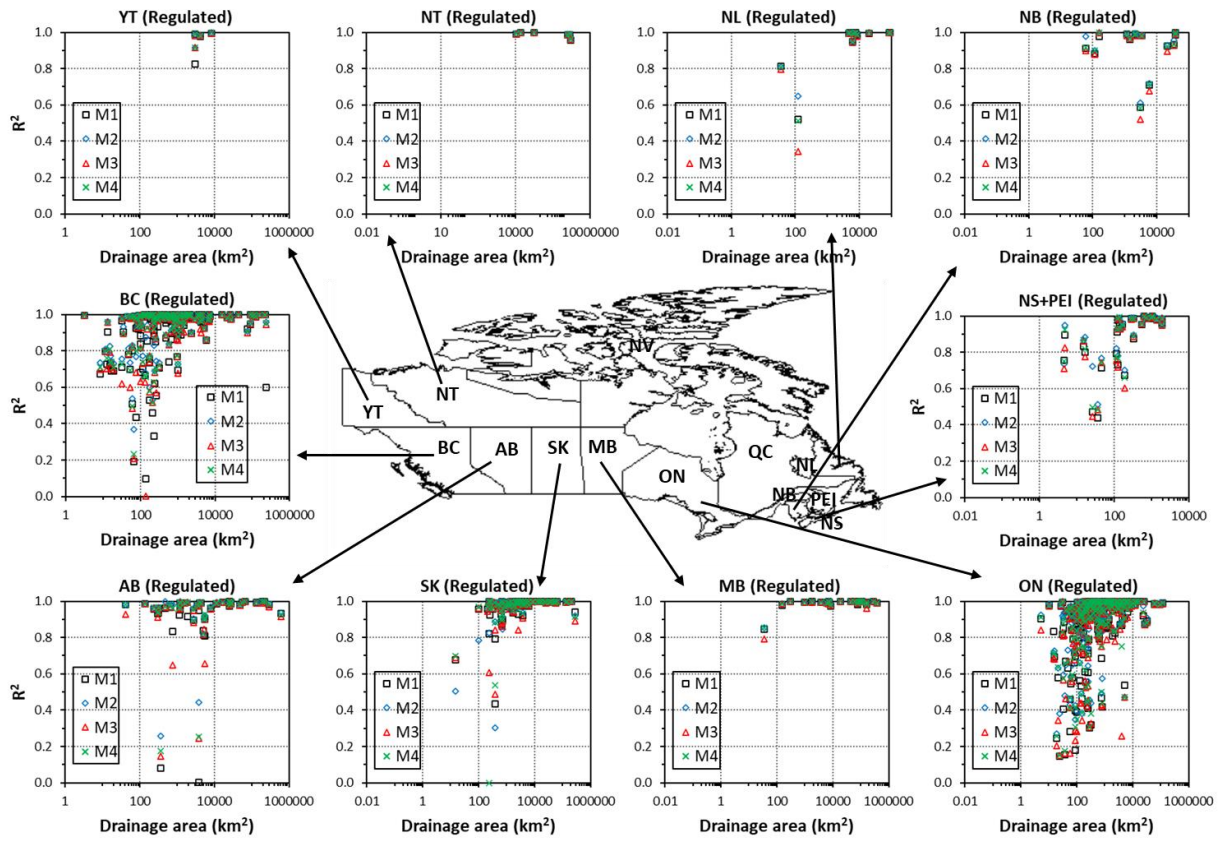


Figure S3. Same as for Figure 5, but for regulated stations.

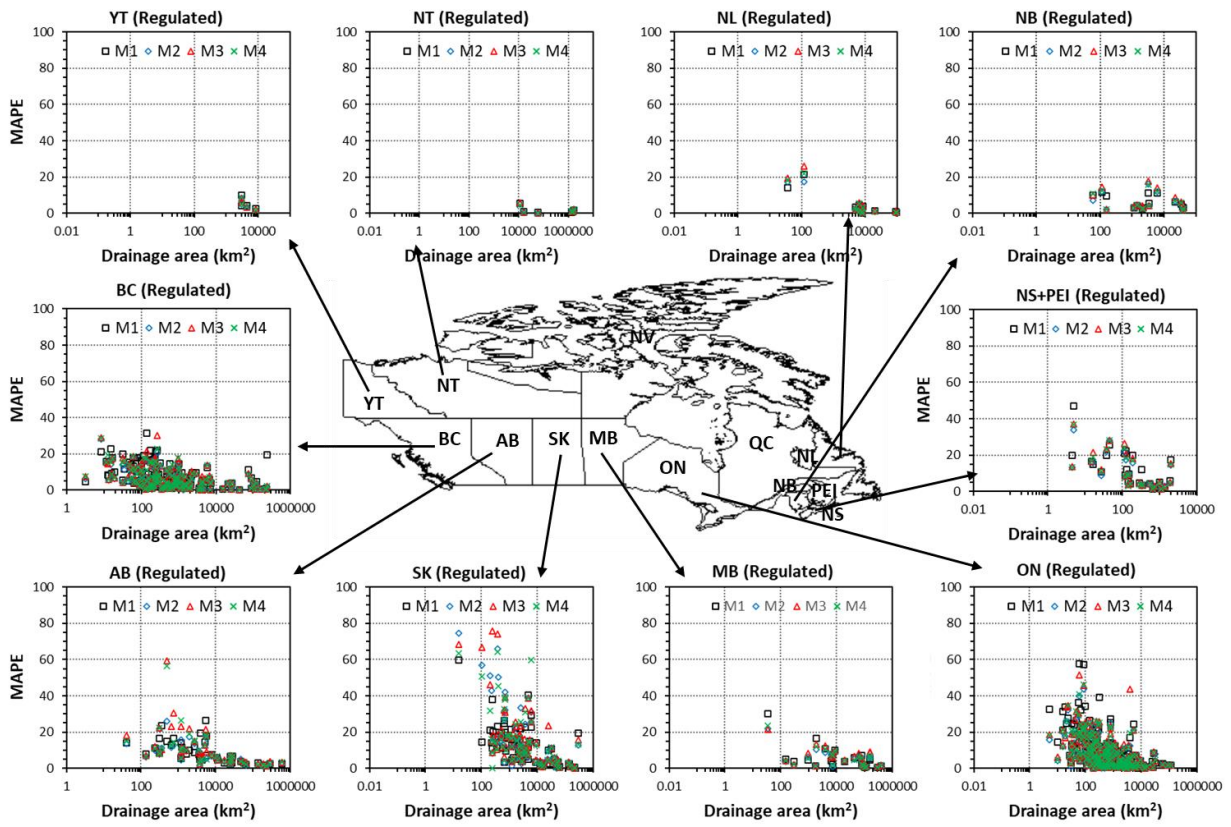


Figure S4. Same as for Figure 6, but for regulated stations.

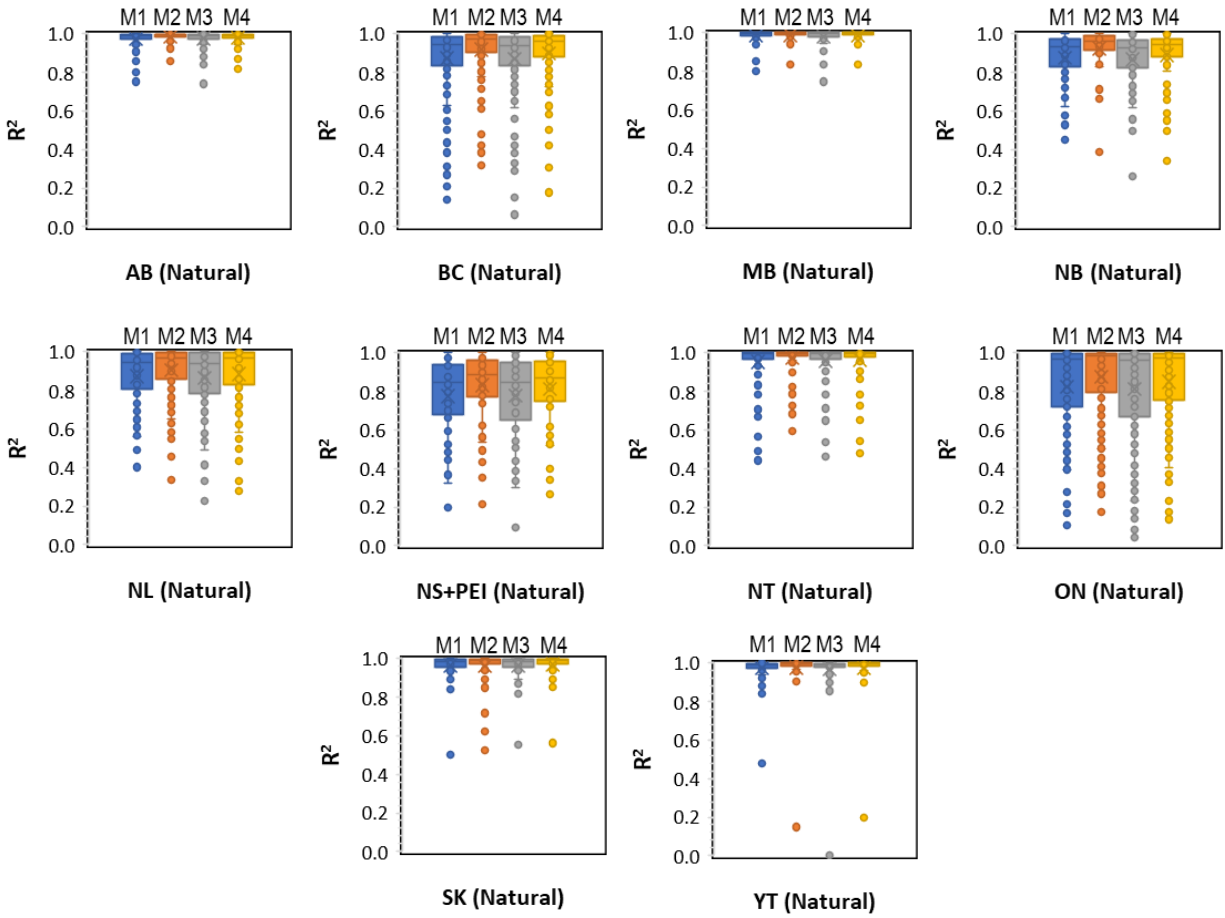


Figure S5. Box and whisker plots of R^2 values for methods M1 to M4 for all natural stations located in different P&Ts. Description of box and whisker plots provided in Figure 3 caption.

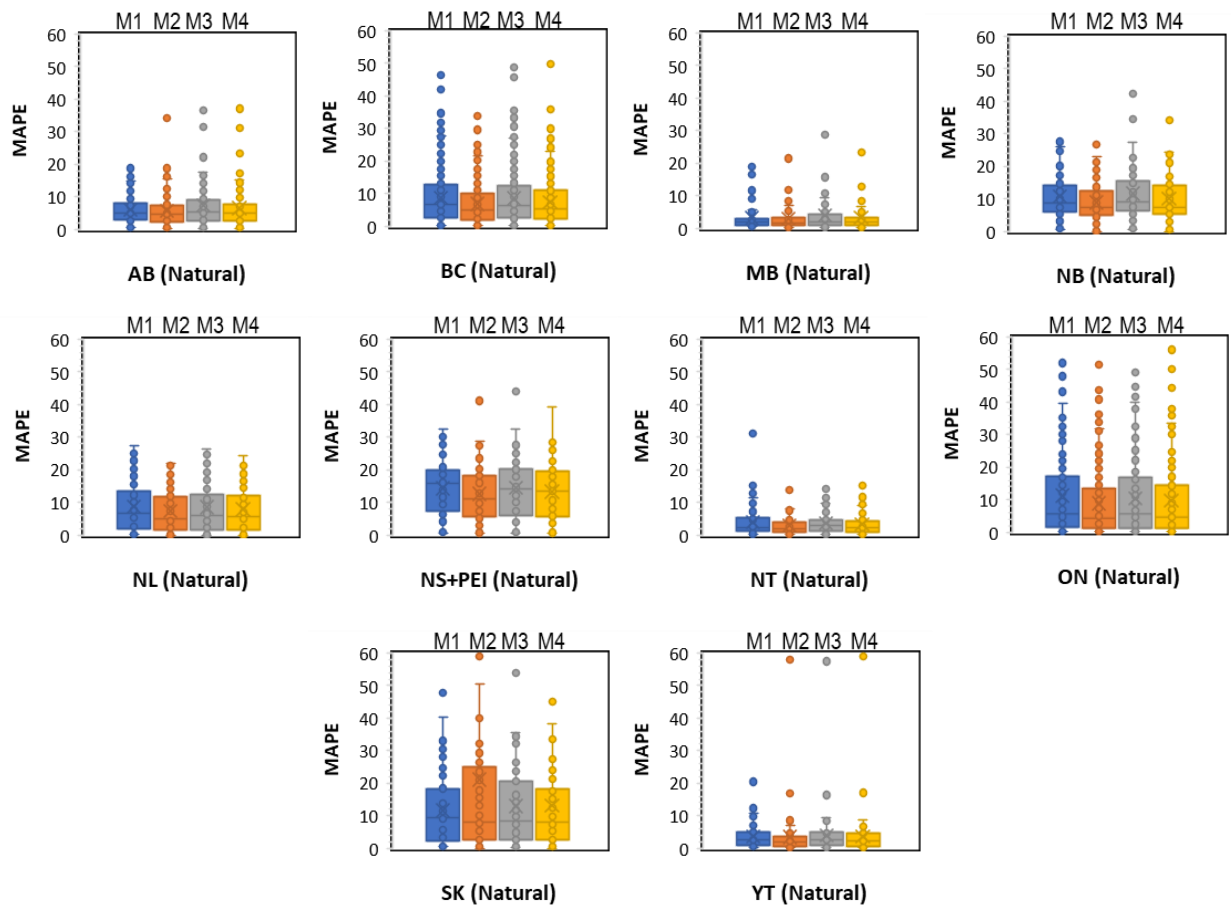


Figure S6. Box and whisker plots of MAPE values for methods M1 to M4 for all natural stations located in different P&Ts. Description of box and whisker plots provided in Figure 3 caption.

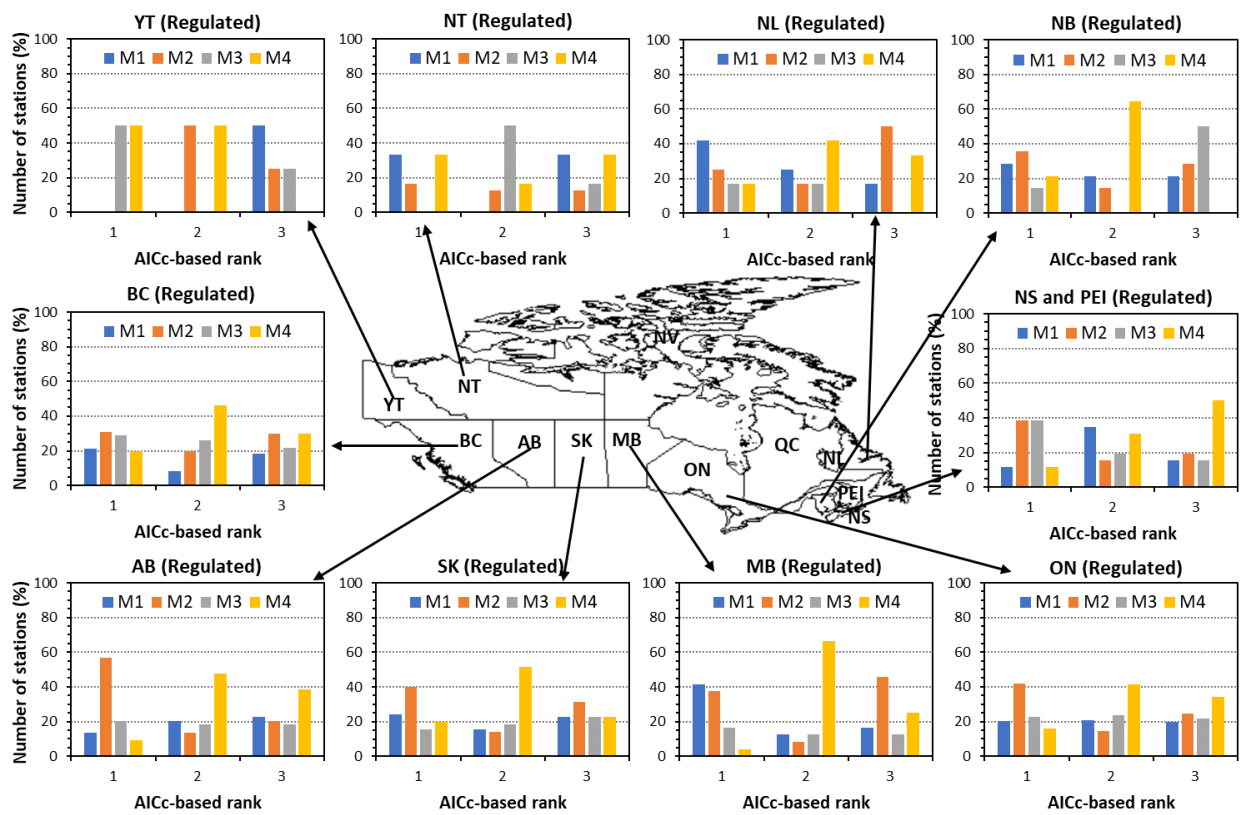


Figure S7. Same as for Figure 7, but for regulated stations.