



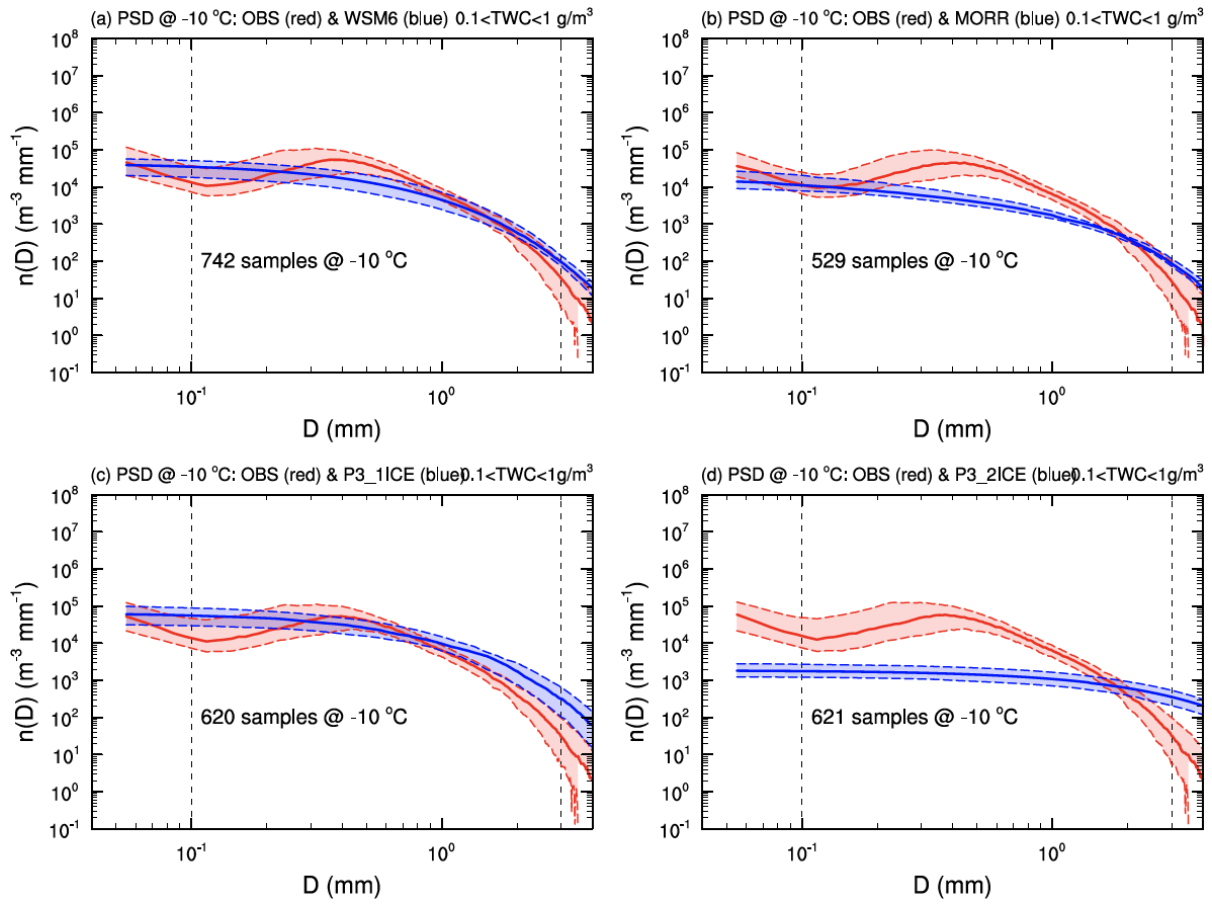
*Supplement of*

**Microphysical processes producing high ice water contents (HIWCs) in tropical convective clouds during the HAIC-HIWC field campaign: evaluation of simulations using bulk microphysical schemes**

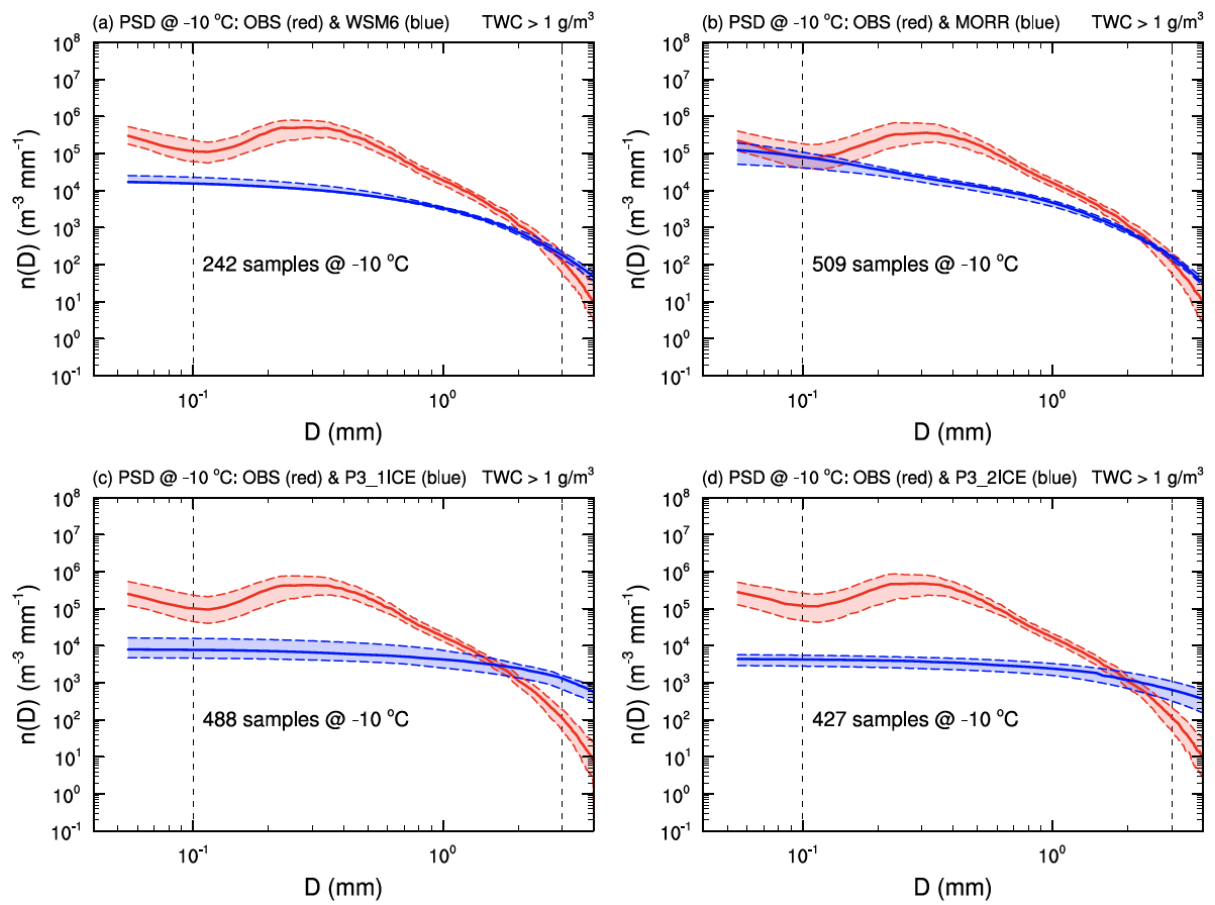
**Yongjie Huang et al.**

*Correspondence to:* Wei Wu ([weiwu@ou.edu](mailto:weiwu@ou.edu))

The copyright of individual parts of the supplement might differ from the article licence.



**Fig. S1.** Observed (red) and simulated (blue, a: WSM6, b: MORR, c: P3-1ICE, d: P3-2ICE) ice particle size distributions for  $0.1 \text{ g/m}^3 < \text{TWC} < 1 \text{ g/m}^3$  at the level of  $-10 \text{ }^\circ\text{C}$ . The red and blue dashed lines indicate the 25<sup>th</sup> and 75<sup>th</sup> percentiles, and the red and blue solid lines represent the median.



**Fig. S2.** Observed (red) and simulated (blue, a: WSM6, b: MORR, c: P3-1ICE, d: P3-2ICE) ice particle size distributions for TWC > 1 g/m<sup>3</sup> at the level of -10 °C. The red and blue dashed lines indicate the 25<sup>th</sup> and 75<sup>th</sup> percentiles, and the red and blue solid lines represent the median.