

Figure. S1: Effect of quercetin and resveratrol on MC/9 viability and optimization of TNF release. (A) MC/9 were treated with 1, 10, 30, 50 or 100 μ M of quercetin, resveratrol or DMSO for 24 hr followed by trypan blue staining. $n=3$. (B) TNF release by MC/9 following stimulation with different concentrations of DNP-HA (0.1-10,000 ng/ml) for 20 hr at a cell density of 1×10^6 cells/ml. $n=3$. (C) TNF release following 100 ng/ml DNP-HA stimulation for different time periods (2-32 hr). Untreated (Ut) represents 32 hr data point. $n=3$. p value <0.01 (**) is relative to 0.1 ng/ml DNP-HA (A, B) or Ut (C).

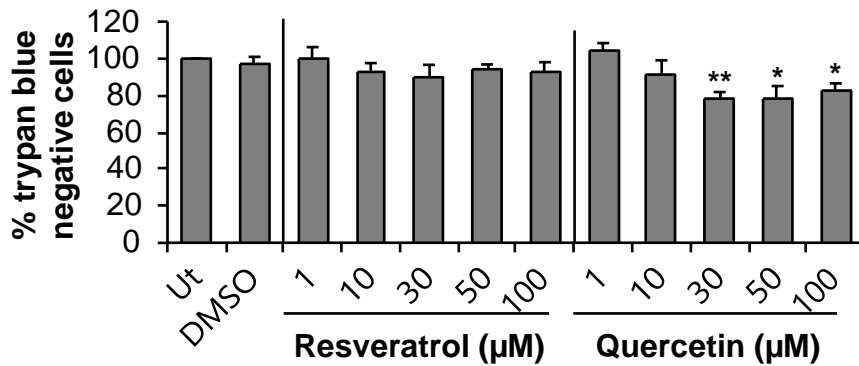


Figure.S2. Effect of resveratrol and quercetin on BMMC viability. BMMC were treated with 1, 10, 30, 50 or 100 μM of the indicated flavonoids or DMSO for 24 hr followed by trypan blue staining. Ut represents untreated cells. $n=5$. p value <0.05 (*) and <0.01 (**) are relative to DMSO control.

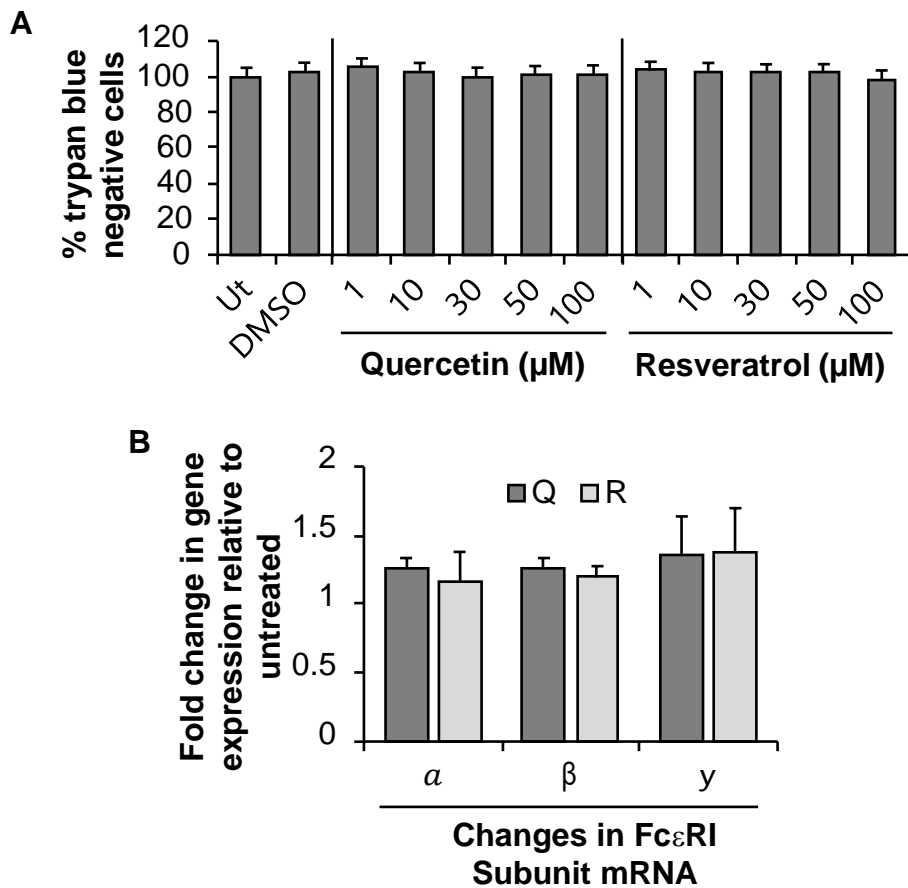


Figure. S3. Effect of quercetin and resveratrol on LAD2 cell viability and Fc ϵ RI α , β and γ subunit mRNA expression. (A) LAD2 were treated with 1, 10, 30, 50 or 100 μ M of the indicated flavonoids or DMSO for 24hr followed by trypan blue staining. Ut represents untreated cells. $n=5$. p value <0.05 (*) and <0.01 (**) are relative to DMSO control. (B) LAD2 were treated with 100 μ M quercetin (Q) or resveratrol (R) for 3 hr followed by RNA extraction, cDNA synthesis and qPCR using gene specific primers against human Fc ϵ RI α , β and γ subunits. Human GapDH was utilized as a housekeeping gene to normalize the samples. $2^{-\Delta\Delta C_T}$ value is plotted relative to untreated control. $n=3$.

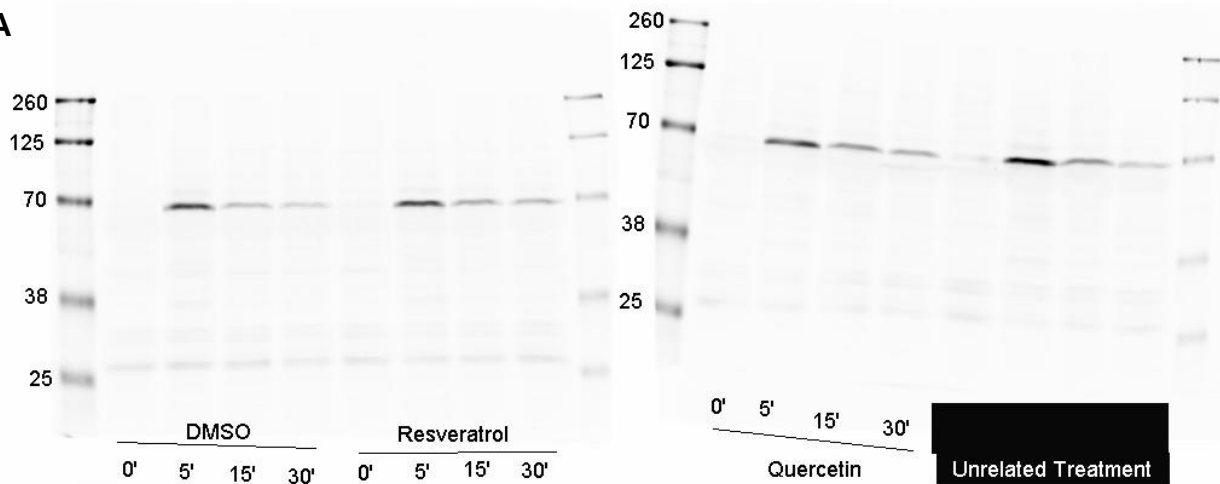
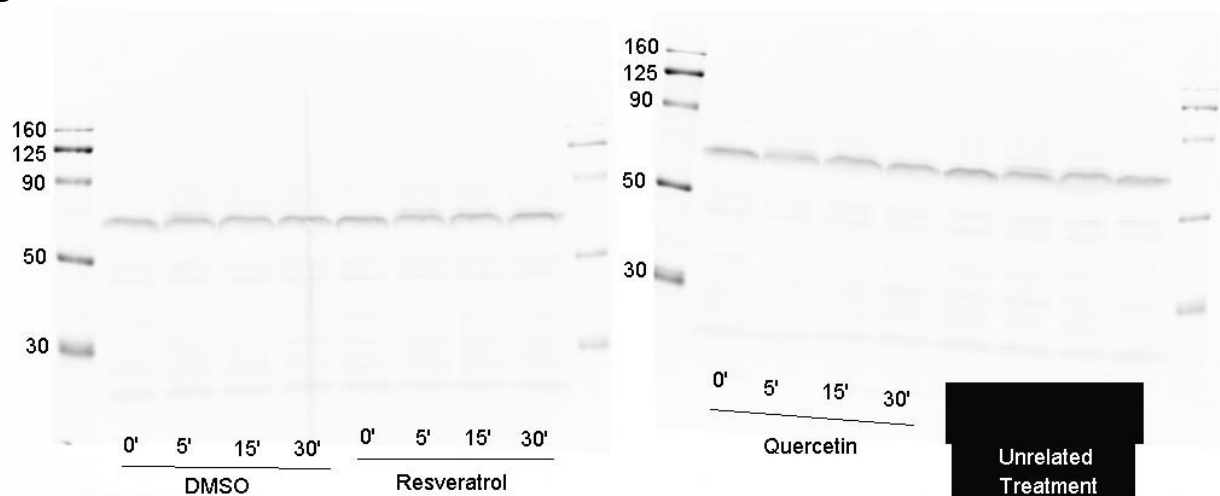
A**B**

Figure. S4. Full blots for figures 4A. Full western blot images for phospho-SYK (A), and total SYK (B) from figure 4A. Numbers beside ladders indicate predicted size of each MW marker in kDa.

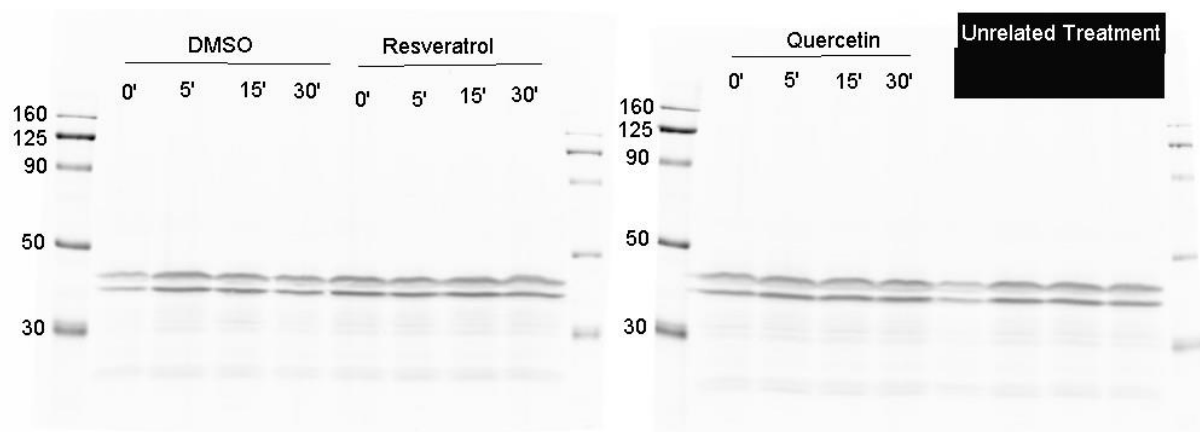
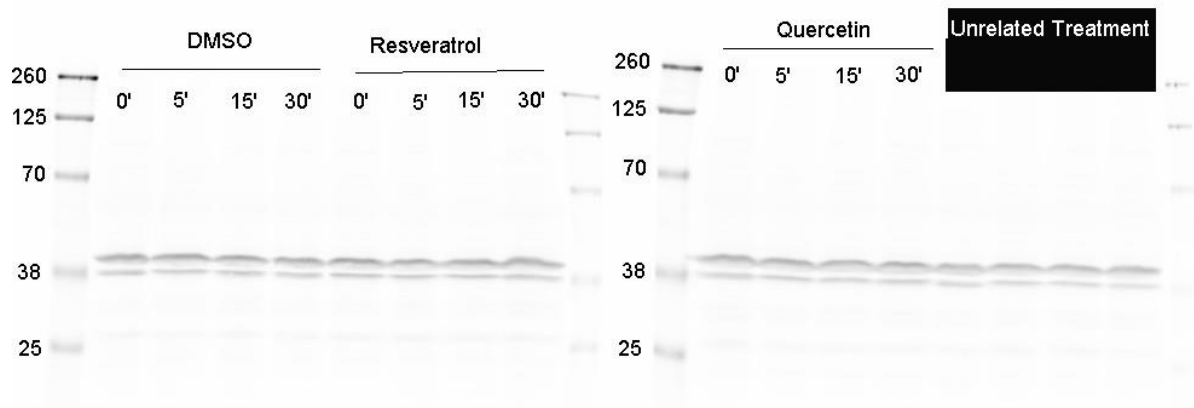
A**B**

Figure. S5. Full blots for figures 4B. Full western blot images for phospho-ERK (A), and total ERK (B) from figure 4B. Numbers beside ladders indicate predicted size of each MW marker in kDa.

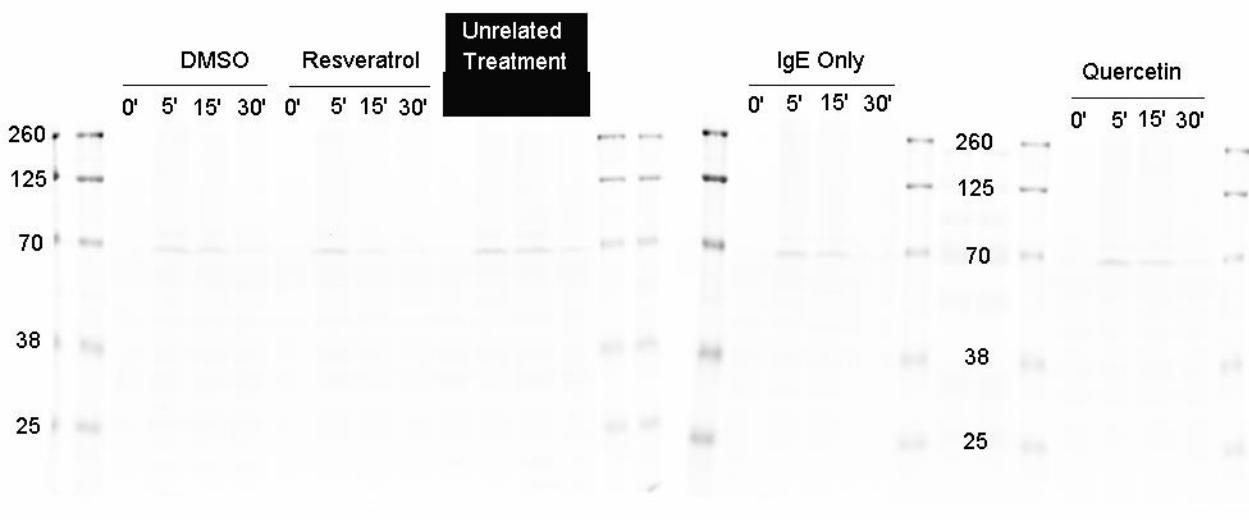
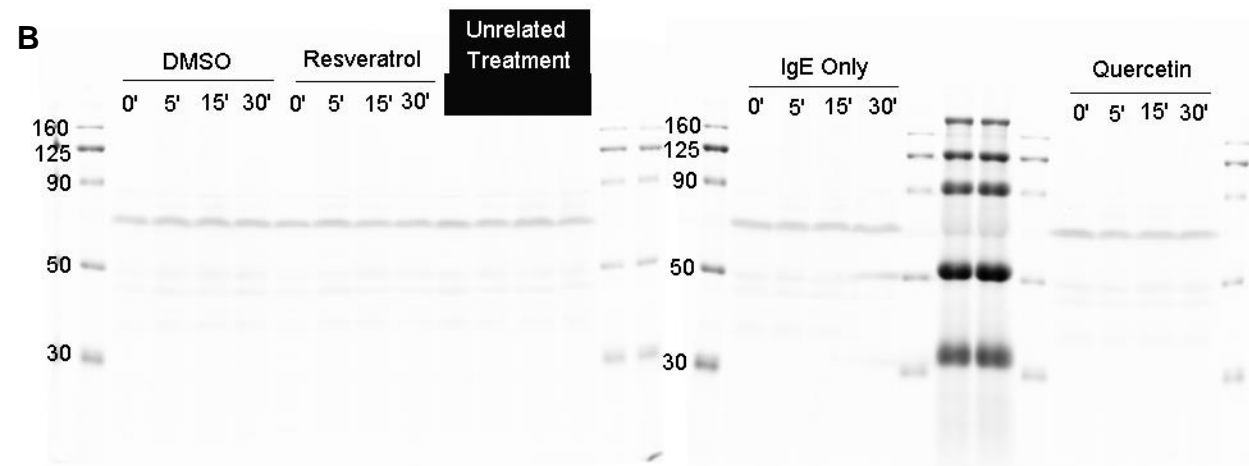
A**B**

Figure. S6. Full blots for figures 6A. Full western blot images for phospho-SYK (A), total SYK (B) from figure 6A. Numbers beside ladders indicate predicted size of each MW marker in kDa.

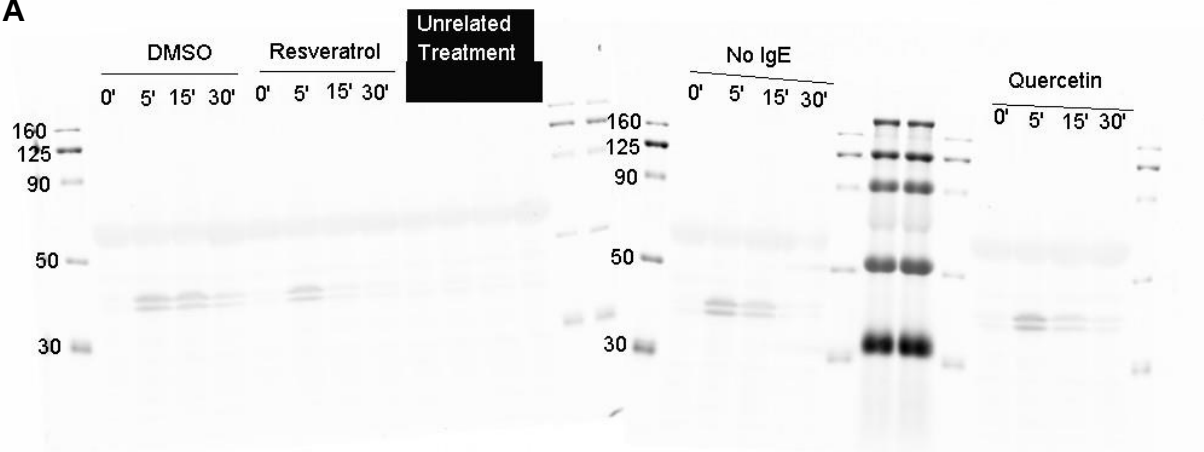
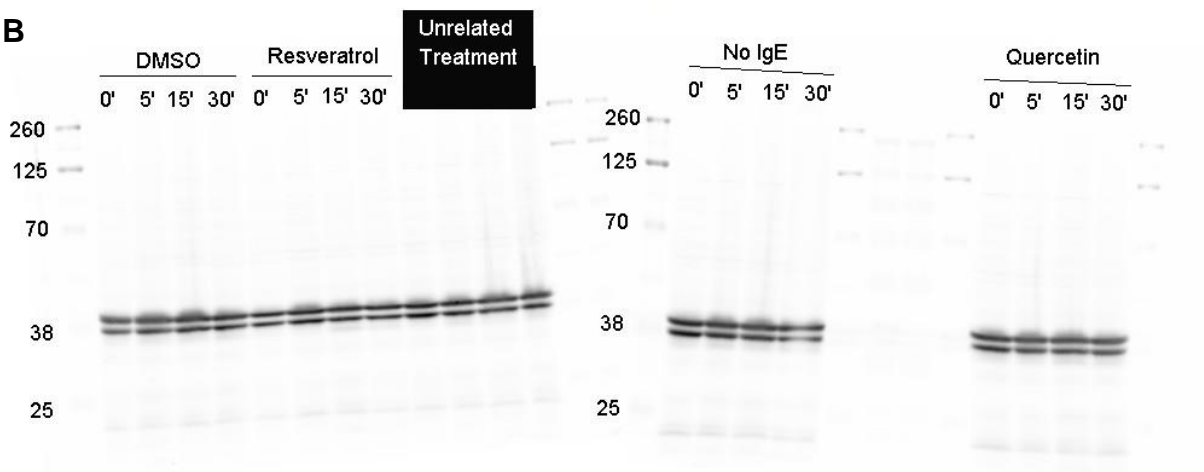
A**B**

Figure. S7. Full blots for figures 6B. Full western blot images for phospho-ERK (A), and total ERK (B) from figure 6B. Numbers beside ladders indicate predicted size of each MW marker in kDa.