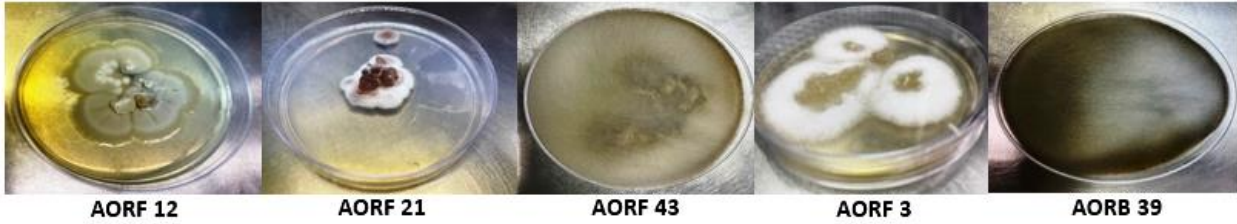
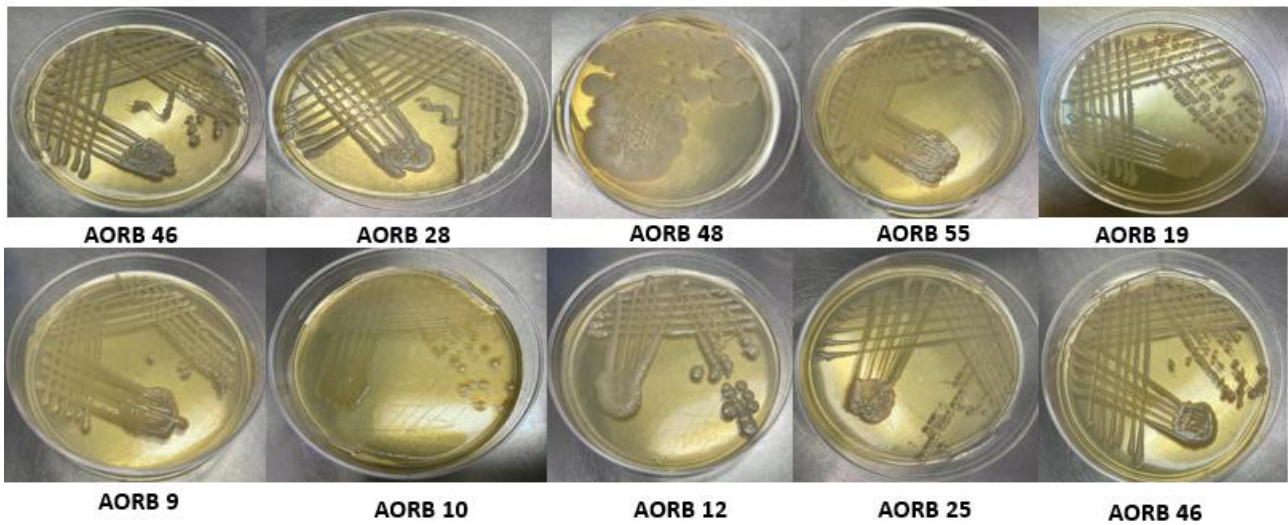


Supplementary Data

Supplemental Figure. 1 Pure cultures of fungal isolates selected from secondary screening

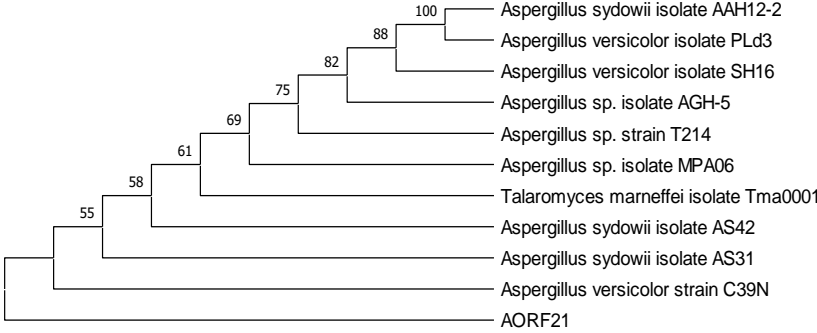


Supplemental Figure. 2 Pure cultures of bacterial isolates selected from secondary screening

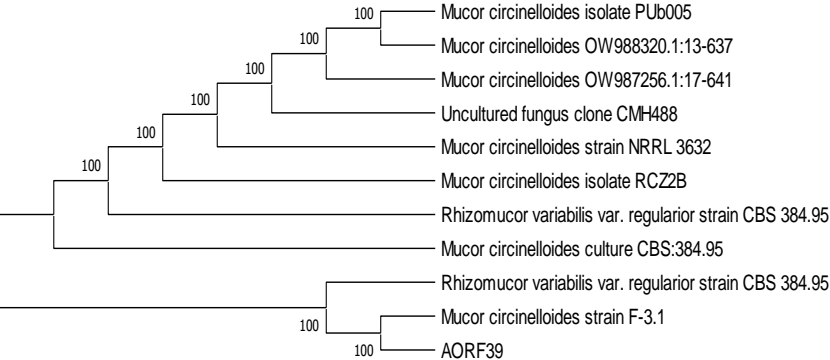


Supplementary Figure. 3 (a) to (e): Phylogenetic tree of five selected lignin degrading fungal strains based on neighbor joining criteria using MEGA-X. The percentage of replicate trees associated taxa are clustered together using the bootstrap test (1000 replicates) are shown next to the branches.

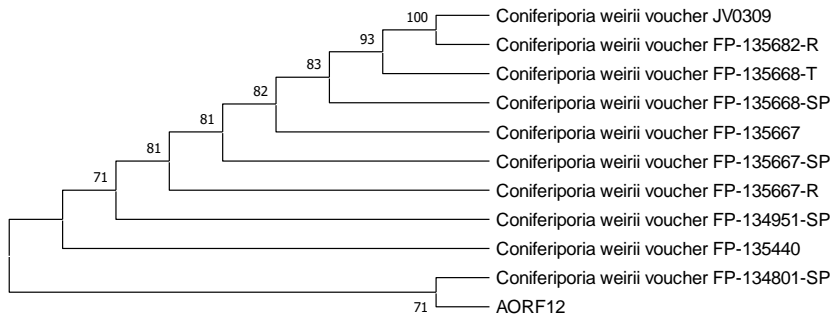
a) AORF21



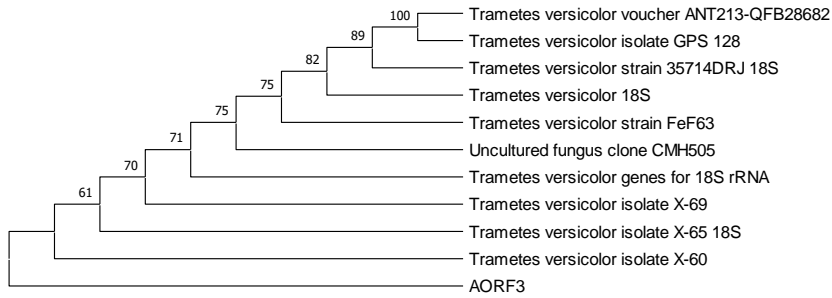
b) AORF39



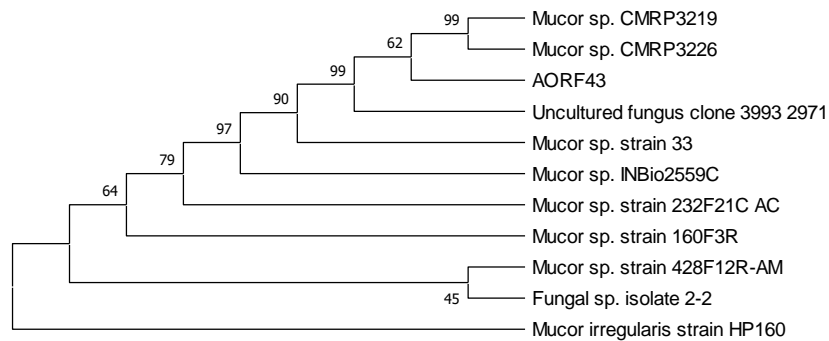
c) AORF12



d) AORF3

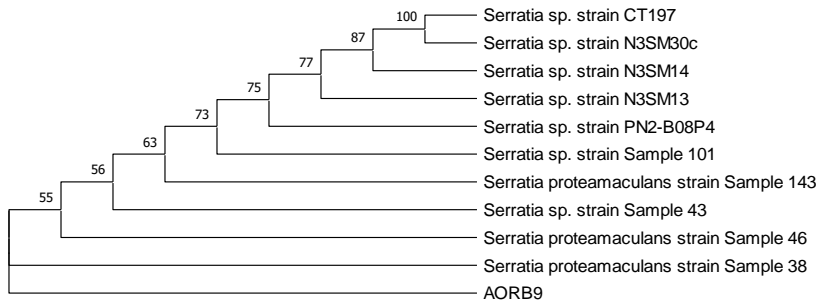


e) AORF43

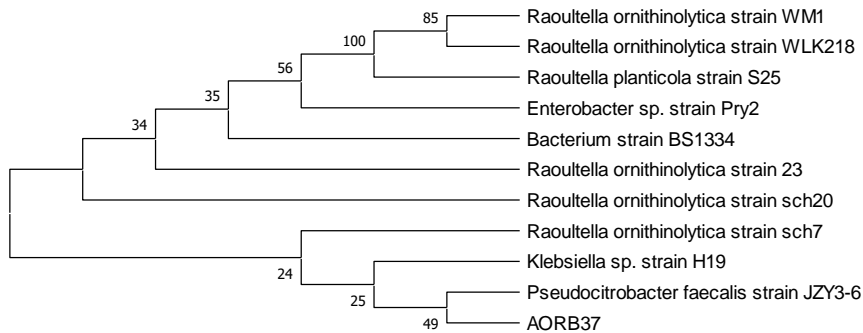


Supplementary Figure. 4 (a) to (j): Phylogenetic tree of ten selected lignin degrading bacterial strains based on neighbor joining criteria using MEGA-X. The percentage of replicate trees associated taxa are clustered together using the bootstrap test (1000 replicates) are shown next to the branches.

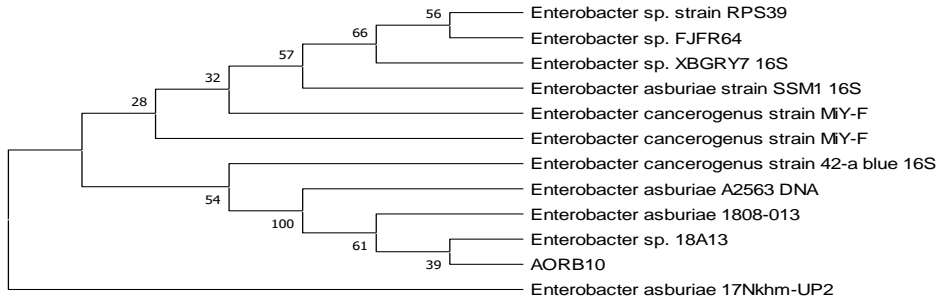
a) AORB9



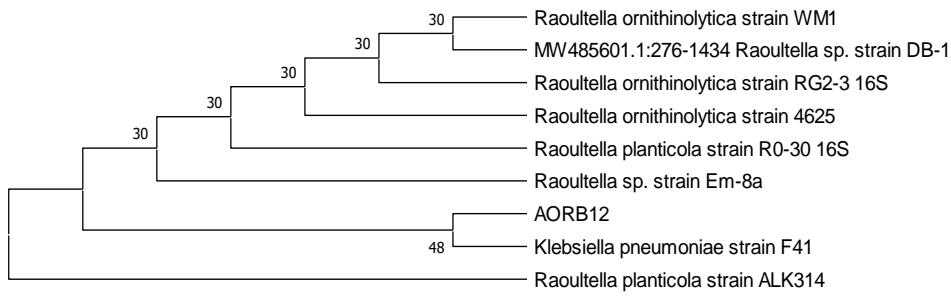
b) AORB37



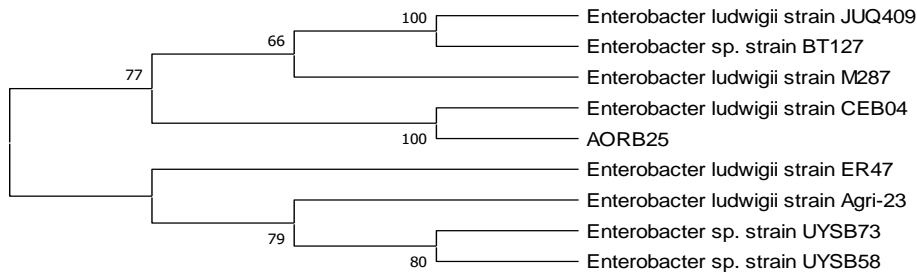
c) AORB10



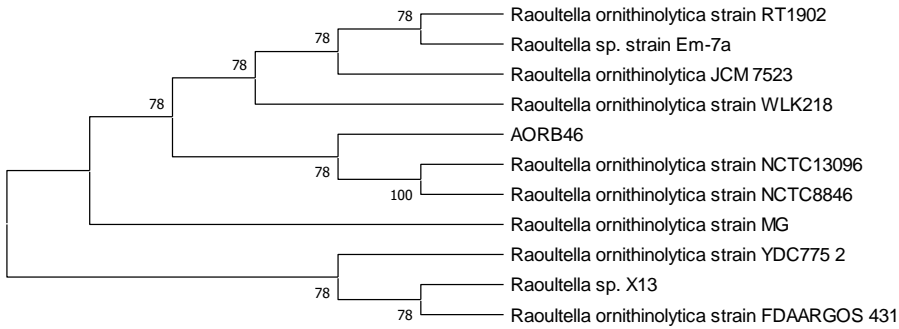
d) AORB12



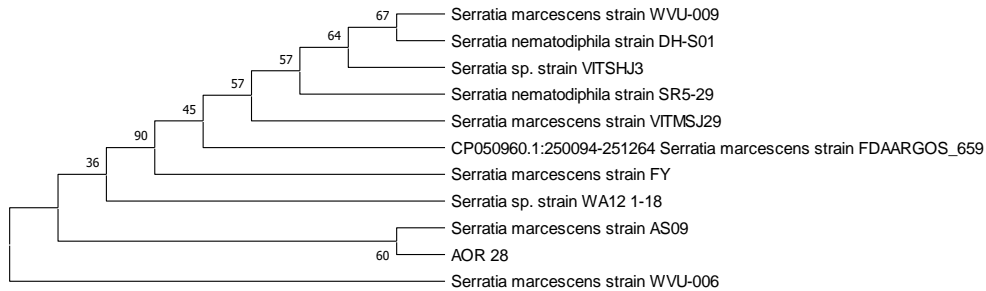
e) AORB25



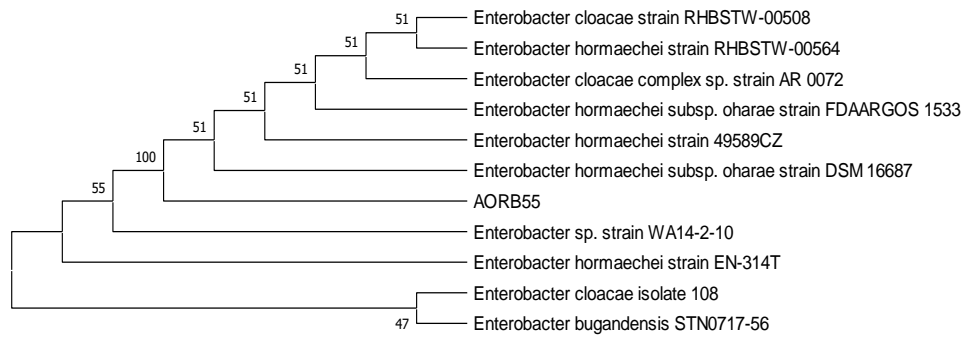
f) AORB46



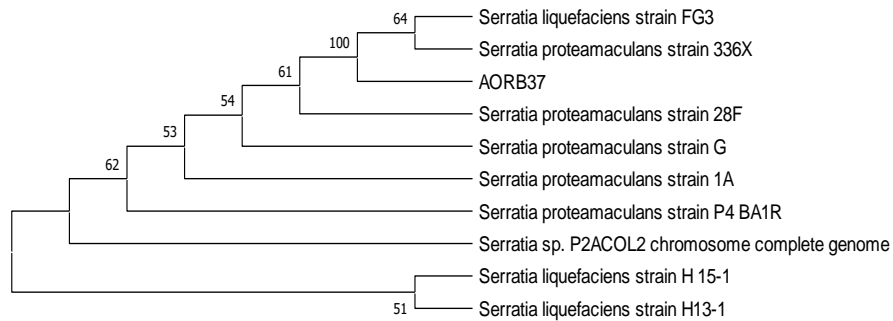
g) AORB28



h) AORB55



i) AORB19



j) AORB48

