

NRC Publications Archive Archives des publications du CNRC

Proteomic analysis of the secretome of *Cellulomonas fimi* ATCC 484 and *Cellulomonas flavigena* ATCC 482

Wakarchuk, Warren W.; Brochu, Denis; Foote, Simon; Robotham, Anna;
Saxena, Hirak; Erak, Tamara; Kelly, John

This publication could be one of several versions: author's original, accepted manuscript or the publisher's version. /
La version de cette publication peut être l'une des suivantes : la version prépublication de l'auteur, la version
acceptée du manuscrit ou la version de l'éditeur.

For the publisher's version, please access the DOI link below. / Pour consulter la version de l'éditeur, utilisez le lien
DOI ci-dessous.

Publisher's version / Version de l'éditeur:

<https://doi.org/10.1371/journal.pone.0151186>

PLoS ONE, 11, 3, pp. 1-13, 2016-03-07

NRC Publications Archive Record / Notice des Archives des publications du CNRC :

<https://nrc-publications.canada.ca/eng/view/object/?id=2774950f-f621-47b0-a570-e551304a9a59>

<https://publications-cnrc.canada.ca/fra/voir/objet/?id=2774950f-f621-47b0-a570-e551304a9a59>

Access and use of this website and the material on it are subject to the Terms and Conditions set forth at

<https://nrc-publications.canada.ca/eng/copyright>

READ THESE TERMS AND CONDITIONS CAREFULLY BEFORE USING THIS WEBSITE.

L'accès à ce site Web et l'utilisation de son contenu sont assujettis aux conditions présentées dans le site

<https://publications-cnrc.canada.ca/fra/droits>

LISEZ CES CONDITIONS ATTENTIVEMENT AVANT D'UTILISER CE SITE WEB.

Questions? Contact the NRC Publications Archive team at

PublicationsArchive-ArchivesPublications@nrc-cnrc.gc.ca. If you wish to email the authors directly, please see the
first page of the publication for their contact information.

Vous avez des questions? Nous pouvons vous aider. Pour communiquer directement avec un auteur, consultez la
première page de la revue dans laquelle son article a été publié afin de trouver ses coordonnées. Si vous n'arrivez
pas à les repérer, communiquez avec nous à PublicationsArchive-ArchivesPublications@nrc-cnrc.gc.ca.

RESEARCH ARTICLE

Proteomic Analysis of the Secretome of *Cellulomonas fimi* ATCC 484 and *Cellulomonas flavigena* ATCC 482

Warren W. Wakarchuk^{1*}, Denis Brochu², Simon Foote², Anna Robotham², HIRAK SAXENA¹, Tamara Erak¹, John Kelly²

1 Department of Chemistry and Biology, Ryerson University, Toronto, Ontario, Canada, **2** Human Health Therapeutics Program, National Research Council Canada, Ottawa, Ontario, Canada

* wwakarchuk@ryerson.ca



Abstract

The bacteria in the genus *Cellulomonas* are known for their ability to degrade plant cell wall biomass. *Cellulomonas fimi* ATCC 484 and *C. flavigena* ATCC 482 have been the subject of much research into secreted cellulases and hemicellulases. Recently the genome sequences of both *C. fimi* ATCC 484 and *C. flavigena* ATCC 482 were published, and a genome comparison has revealed their full spectrum of possible carbohydrate-active enzymes (CAZymes). Using mass spectrometry, we have compared the proteins secreted by *C. fimi* and *C. flavigena* during growth on the soluble cellulose substrate, carboxymethyl-cellulose (CMC), as well as a soluble xylan fraction. Many known *C. fimi* CAZymes were detected, which validated our analysis, as were a number of new CAZymes and other proteins that, though identified in the genome, have not previously been observed in the secretome of either organism. Our data also shows that many of these are co-expressed on growth of either CMC or xylan. This analysis provides a new perspective on *Cellulomonas* enzymes and provides many new CAZyme targets for characterization.

OPEN ACCESS

Citation: Wakarchuk WW, Brochu D, Foote S, Robotham A, Saxena H, Erak T, et al. (2016) Proteomic Analysis of the Secretome of *Cellulomonas fimi* ATCC 484 and *Cellulomonas flavigena* ATCC 482. PLoS ONE 11(3): e0151186. doi:10.1371/journal.pone.0151186

Editor: Kyoung Heon Kim, Korea University, REPUBLIC OF KOREA

Received: November 26, 2015

Accepted: February 24, 2016

Published: March 7, 2016

Copyright: © 2016 Wakarchuk et al. This is an open access article distributed under the terms of the [Creative Commons Attribution License](https://creativecommons.org/licenses/by/4.0/), which permits unrestricted use, distribution, and reproduction in any medium, provided the original author and source are credited.

Data Availability Statement: All of the data are available in the Supporting Information files.

Funding: This work was funded by Natural Sciences Engineering Research Council Discovery grant to W. Wakarchuk NSERC 385796-2011.

Competing Interests: The authors have declared that no competing interests exist.

Introduction

Strains of the *Cellulomonas* genus were shown almost 40 years ago to produce extracellular enzymes that could efficiently degrade pretreated sugarcane bagasse [1]. As interest in enzymatic saccharification grew for production of fuel ethanol from biomass, there was a corresponding interest in microbial cellulases, and those from *Cellulomonas* were an obvious choice to study. The enzymes were shown to be both free in the supernatant and cellulose bound [2]. The composition of the cellulases produced was shown to be a complex mixture [3, 4], including some proteins which were clearly proteolytic breakdown products [5]. The advent of molecular cloning soon revealed that indeed there were many genes for cellulases and xylanases in the type strain *C. fimi* ATCC 484 [6–12]. These genes were identified using expression cloning from shotgun libraries which was a remarkably successful approach for *Cellulomonas* and for many other bacterial cellulase systems. However, given the limitations of expression cloning

at the time, it was not evident that all of the potential *Cellulomonas* secreted plant cell wall degrading enzymes had been identified.

With advances in proteomic technology it became possible to probe secretomes directly for protein content. An elegant approach using gel-free activity based profiling was applied to the *C. fimi* secretome and permitted the identification of a new β -1,4-glycanase [13]. A more traditional approach was applied to identify proteins in the secretome *C. flavigena*., A number of potential cellulase and xylanase proteins were identified by this method, but because at that time the genome had not been sequenced, the corresponding genes could not be easily identified [14].

Dramatic changes to the cost and availability of microbial genome sequencing has changed our understanding of the CAZyme content of bacteria. Increased sequencing data has led to better bioinformatics prediction of CAZymes, and the CAZy database [15] has grown exponentially as a result. Various actinobacteria related to *Cellulomonas* have been sequenced and their CAZymes are now included in the CAZy database. For example, 43 glycoside hydrolase (GH) enzymes are predicted in *Thermobifida fusca* and various *Streptomyces sp.* have around 159 GH enzymes. The genome of *C. fimi* ATCC484 has 109 GH enzymes and that of *C. flavigena* ATCC482 has 89 [16]. In order to make sense of these multi-enzyme systems for biomass degradation, it is important to understand under what conditions and with what kind of induction and regulation are different subsets of CAZymes expressed. The secretome of both *T. fusca* and a *Streptomyces species* have been examined by modern proteomics techniques [17, 18], but to date, no similar analysis of the secretome of *Cellulomonas* species has been completed.

Presented here are the results of a mass spectrometry study to identify the proteins secreted by *C. fimi* and *C. flavigena* during growth on carboxymethylcellulose (CMC) as well as a soluble xylan fraction. Many known *C. fimi* CAZymes were detected as were a number of other CAZymes and proteins that, though identified in the genome, have not previously been observed in the secretome of either organism. Furthermore, we show here that expression of many of these proteins appears to be dependent on the growth medium (CMC or xylan).

Material and Methods

Growth of bacteria and preparation of proteins

C. fimi ATCC484 and *C. flavigena* ATCC482 were grown at 30°C, with shaking at 150 rpm in low salt Luria broth (0.5 g NaCl, 5 g Yeast extract, 10 g of bacto-tryptone per litre) supplemented with either 0.2% medium viscosity carboxymethylcellulose, or 0.2% soluble birch wood xylan (extracted from birch wood xylan with 60°C water, then freeze dried) or 0.5% glucose. CMC and xylan were autoclaved in the culture media, glucose was added from a sterile stock solution in water. Plate grown cells were used to inoculate 25 ml starter cultures in low salt Luria broth with 0.2% glucose as carbohydrate. Growth was carried out in 1L baffled shake flasks with 200 ml of media in each flask. The A600 nm was monitored and cultures were processed when the A600 reached ~ 3 (30 hours of growth). Culture supernatants were concentrated 20 fold by ultrafiltration on 10,000 mwco polyethersulfone membranes (VWR) Cellulase and xylanase activity was measured with a 5 mg/mL suspension of AZCL-hydroxyethylcellulose and AZCL-xylan (Megazyme Corp. Ireland) in 50 mM sodium phosphate, 150 mM NaCl, pH 6 buffer at 37°C various times. Release of soluble fragments was measured in clarified reaction supernatants at A540 nm as suggested by the manufacturer. Biological replicates were grown exactly the same way, but from a different starter culture on a different day.

The supernatant (100 mL) was first filtered through glass fibre and then freeze-dried. The proteins were then dissolved in 10 ml of water and ice-cold TCA was added to 16.7% final concentration to precipitate the proteins. After mixing, the TCA precipitation mixture was kept on

ice for 15 minutes, and then the proteins were collected by centrifugation at 10,000 x g for 20 min at 4°C. The pellets were washed twice with ice cold 10% TCA, twice with acetone, and then briefly dried in a fume hood. The pellets were solubilized in 60 mM Tris-HCl buffer pH 7.0. The samples were diluted to 62.5 mM Tris-HCl pH 6.8, 2% SDS, 5% 2-mercaptoethanol and 10% glycerol, using a 3X loading buffer, prior to loading on gels.

Analysis of proteins by mass spectrometry

The supernatant proteins were resolved on a 12% SDS-PAGE mini gel. Protein bands were visualized using Biosafe Coomassie Blue stain. For analysis, each of the sample containing lanes were cut into 25 equal bands using a gel cutter from about 150kDa to just above the dark smear at the bottom of the gel. Selected protein gel bands were excised and destained by gentle shaking in 100 mM ammonium bicarbonate (ABC), 30% acetonitrile (ACN). This step was repeated 2–3 times until the gel band was fully destained. The gel band was dehydrated in ACN, reswollen in 10 mM dithiothreitol in 50 mM ABC and incubated for 1 hour at 54°C. Excess DTT solution and replaced with 55 mM iodoacetamide in 50 mM ABC, enough to cover the band. The samples were left in the dark at room temperature for 1 hour after which the excess iodoacetamide solution was removed. The gel bands were dried and reconstituted in 20 ng/μL trypsin in 100 mM ABC sufficient to just cover the gel pieces. The vials were sealed and incubated overnight at 37°C.

The in-gel digests were analyzed by nanoLC-MS/MS using a QTOF Ultima hybrid quadrupole time-of-flight mass spectrometer coupled to a NanoAquity UPLC system (Waters, Milford, MA). The digests were desalted on a 180 μm x 20 mm 5-μm Symmetry® C18 trap (Waters) and separated on a 100 μm x 100 mm, 1.7 μm BEH130 C18 column (Waters) using the following gradient conditions: hold at 1% mobile phase B (0.2% formic acid in acetonitrile) for 1 minute, increase to 45% B in 18 minutes, increase to 85% B in 2 minutes and then decrease to 1% B in 1 minute. The flow rate was 400 nL/min and the eluate was directed to the nanoelectrospray interface of the Q-TOF. Incoming ions (m/z 400–1600) were surveyed at a rate of 1 scan per second and MS/MS spectra were acquired on doubly, triply and quadruply charged ions (up to 3 precursor ions selected per survey scan). The digests of the second biological repeats were also analyzed by nanoLC-MS/MS on a LTQ-Orbitrap-XL hybrid mass spectrometer (ThermoFisher Scientific). The digests were separated using similar chromatographic conditions to those described above. A survey scan (m/z 400–2000, 60k resolution) was performed in the FTMS analyzer and data-dependent turbo MS/MS scans on the top 3 multiply charged ions were acquired in the linear ion trap (dynamic exclusion of 180 seconds).

The resulting MS/MS spectra were submitted to the Mascot® search engine (Matrix Science Ltd, London, U.K.) and searched against the *C. fimi* ATCC484 or *C. flavigena* ATCC482 complete genome as well as NCBI nr database (May 11th, 2013 version). The searching parameters were as follows: enzyme = trypsin, missed cleavages = 1, variable mods = oxidation and carbamidomethyl, peptide tolerance = 1.5Da and MS/MS tolerance = 1.2Da. A custom Java application was used to analyze the Mascot search results and to generate a presence/absence table for all identified proteins within the *C. fimi* and *C. flavigena* proteome. Only peptides which meet or exceed the threshold values for 95% confidence level leading to Mascot non-probabilistic protein scores (sum of peptide scores) greater than 50 were considered in the analysis.

Results and Discussion

Using genome data, the number of GH enzymes in different species can be predicted. We compared the genomes of four actinobacteria (*C. fimi* (CFi), *C. flavigena* (CFl), *S. coelicolor* (SC) and

Table 1. Known cellulase and xylanase families in related actinobacteria. Families are from the CAZy database (<http://www.cazy.org/Glycoside-Hydrolases.html>). The total GH number does not include pectin lyases.

Organism	CBM33 (AA10)	GH1	GH3	GH5	GH6	GH9	GH10	GH11	GH16	GH48	GH74	Total GH
<i>C.fimi</i>	1	1	11	3	4	4	5	1	3	1	1	109
<i>C. flavigena</i>	4	1	3	3	3	5	16	3	0	1	0	89
<i>S. coelicolor</i>	2	5	9	5	3	2	2	1	5	1	1	159
<i>T. fusca</i>	2	4	2	3	2	2	2	1	0	1	1	43

doi:10.1371/journal.pone.0151186.t001

T. fusca (TF)) and found a similar number of members of different GH subtypes in each species (Table 1). A notable exception was 16 predicted GH-10 xylanases in *Cfl* compared to 5 or less in the other actinobacteria. We then undertook a study to identify GH enzymes at the protein level in the secretome of *CFi* and *CFl* grown on common laboratory polysaccharide substrates, carboxymethylcellulose, and soluble oat-spelt xylan. Soluble polysaccharides were chosen for this study as insoluble substrates are known to tightly bind some secreted enzymes through interactions with CBMs. Proteins were collected and analyzed from two biological replicates.

We grew the bacteria in low salt Luria broth supplemented with either 0.2% CMC, or 0.2% birch wood xylan or 0.5% glucose. There was no detectable cellulase or xylanase activity in the glucose grown cultures, whereas both cellulase and xylanase activity were measured in both of the induced cultures (data not shown). This is consistent with the published activity profiles of these strains (3, 14). The proteins were concentrated using a trichloroacetic acid precipitation, and then analysed on polyacrylamide gels. Fig 1 shows a typical one-dimensional gel that was used for the proteomic analysis. For analysis, each of the sample containing lanes were cut into 25 equal bands using a gel cutter from about 150kDa to just above the dark smear at the bottom of the gel. We analysed tryptic fragments liberated from the gel slices by LC-MS.

Protein identification was performed as indicated in the methods and the resulting data are summarized in S1 Table. In order to be counted, a protein had to be found in at least 1 of the 2 supernatants (CMC or Xylan induced) in both biological replicates. A total of over 600 proteins were identified from this analysis many of which were known cellular components like ribosomal proteins, or enzymes from central metabolism. These cellular proteins arose from cell lysis in the culture during the growth and were simply concentrated along with all the other proteins in the supernatant. The proteins which were considered as being extracellular were divided by their genome annotations and those that were considered intracellular were ignored in the analysis. The CAZyme i.d. results obtained for *C. fimi* and *C. flavigena* on the two growth media are summarised in Figs 2 and 3, respectively. We have also indicated when we could not bio-informatically identify a secretion leader of the SEC or TAT type for a protein seen in the preparations.

CAZymes secreted by *C. fimi*

Cellulases. The CAZyme content of the *C.fimi* and *C. flavigena* supernatants is shown in Figs 2 and 3, which is organized by proteins found in both growth conditions, followed by CMC supernatant only, followed by xylan supernatant only. In *CFi* there were many known CAZymes being expressed. The cellulases: Cel6A (CenA)/Cel6B (CbhA), Cel5A(CenD), Cel9B (CenC), Cel48A(CbhB or CenE) were better represented in the CMC supernatant than in the xylan supernatant. Absent from the supernatants were the cellulase Cel9A (CenB) and the new GH9 members Cel9C/D. A new member of the Cel6 family, Celf_1230 (Cel6C) was easily detected in both conditions. This enzyme is unique to *CFi* and blast searches reveal no close homologues in other actinobacteria. We have cloned and characterized this enzyme, it is an

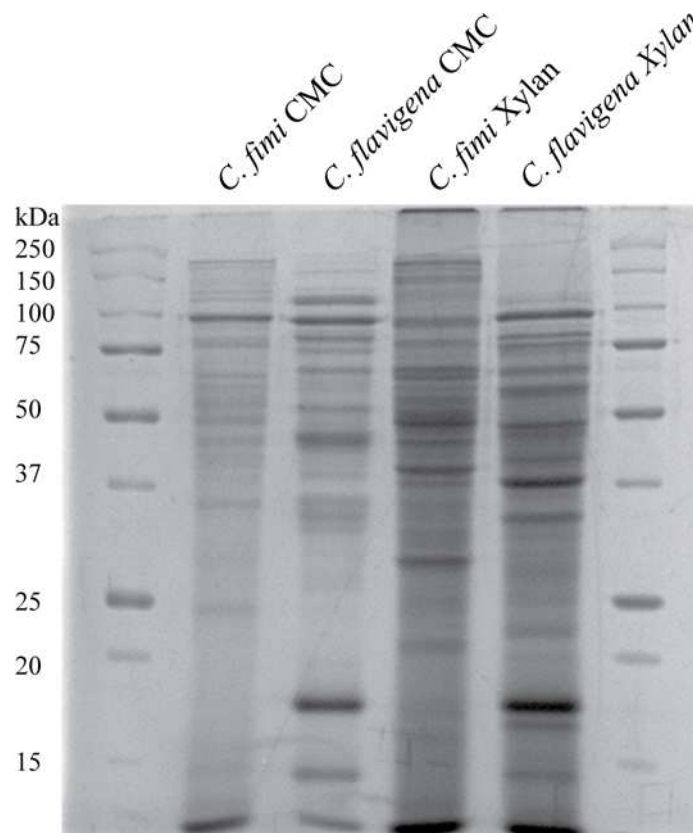


Fig 1. Example of the SDS-PAGE that was used for GellC analysis of supernatant proteins. Lanes 1 and 6: BioRad All-blue SDS-PAGE standards; Lane 2: proteins recovered from the supernatant of CMC grown *C. fimi* ATCC484 cells; Lane 3: proteins recovered from the supernatant of CMC grown *C. flavigena* ATCC482 cells; Lane 4: proteins recovered from the supernatant of soluble xylan grown *C. fimi* ATCC484 cells; Lane 5: proteins recovered from the supernatant of soluble xylan grown *C. flavigena* ATCC482 cells.

doi:10.1371/journal.pone.0151186.g001

endoglucanase and the biochemical characterization of this enzyme Cel6C will be published elsewhere (B. Hsu et al in preparation). We did not confidently identify the fourth predicted GH6 family member, except as single peptide, so it is not shown in the Figure. There is a second GH5 family member, Celf_2403 produced in both conditions. We have also cloned and expressed this protein but, so far at least, it has not demonstrated any enzymic activity (H.Saxena unpublished).

Additional Glucanases. Proteins which may be β -glucanases and have not yet been described from *C. fimi* include a GH3 which based on sequence comparisons [19] is likely a cel-lodextrinase (Celf_0583), there is also a member of the AA10 (formerly CBM33) family of the copper-dependent lytic polysaccharide monooxygenases. There were also proteins from GH16, GH18, and GH64 which are potential β -glucanases that have not been characterized from *C. fimi*. In addition we also detected in the CMC supernatant a GH81 β -1,3-glucanase, and a GH94 cellobiose phosphorylase, which lacked typical SEC or TAT leader sequences, but which could be involved in glucan degradation.

Xylanases. As expected the xylanases were more represented in xylan supernatant than CMC, but Xyn10A (aka Cex) was seen in similar amounts in both conditions, possibly reflecting its mixed activity on cellobiosides as well as xylan [20]. Xyn10B (XylC) and Xyn10C (Cfx) were predominantly in the xylan supernatant, while a new Xyn10 (Celf_3156) was seen exclusively in xylan supernatants. The GH11 Xyn11A is also exclusively seen in the xylan

Locus	CAZyme	CFi protein	Present CMC	Present Xylan	No Leader	Unique in Cfi	New
Celf_0270	AA10	CBM33					
Celf_0403	CBM2						
Celf_0583	GH3						Y
Celf_3275	GH3						Y
Celf_1924	GH5	Cel5A CenD					
Celf_2403	GH5					Y	Y
Celf_1925	GH6	Cel6B CbhA					
Celf_3184	GH6	Cel6A CenA					
Celf_1230	GH6	Cel6C				Y	Y
Celf_0574	GH10	Xyn10C XylC					
Celf_0088	GH10	Xyn10B Cfx					
Celf_1271	GH10	Xyn10A Cex					
Celf_2761	GH13				N		
Celf_1126	GH13-GH13						
Celf_3113	GH16						Y
Celf_3161	GH18						
Celf_3321	GH51						
Celf_3393	GT51				N		
Celf_3785	GT51						
Celf_2377	Man Lectin						Y
Celf_0019	GH9	Cel9A					
Celf_1537	GH9	Cel9B					
Celf_2168	GH23				N		
Celf_0862	GH26	Man26A					
Celf_3400	GH48	Cel48A					
Celf_0317	GH94	Cellobiose phosphorylase			N		
Celf_0618	GT20						
Celf_3330	GH64						Y
Celf_3545	GH81						
Celf_2726	GH3	Xyl3A			N		Y
Celf_2053	GH3				N		
Celf_3156	GH10	Xyn10B like					Y
Celf_0374	GH11	Xyn11A					
Celf_1744	GH39				N		
Celf_3157	GH43						
Celf_1746	GH51						
Celf_3155	GH62						

Fig 2. CAZyme content from *C. fimi* culture supernatants. The proteins are identified by CAZy family, and if they have been previously characterized, the designation is given in CFi protein column. The proteins expressed in media with CMC are indicated with a blue box or those from media with xylan with a green box. The yellow box identifies proteins that have no bioinformatically identified secretion leader (SEC or TAT). The tan box indicates this protein is unique to *C. fimi*, and the red box identifies a new cellulase or xylanase. The data are arranged by enzyme family for each group: both substrates, CMC only, followed by Xylan only.

doi:10.1371/journal.pone.0151186.g002

Locus	CAZyme	Cfi homolog	Present CMC	Present Xylan	No Leader	Unique in CFI
Cfla_0172	AA10	CBM33				
Cfla_0175	AA10	CBM33				
Cfla_0490	AA10	CBM33				
Cfla_0242	CE1					
Cfla_0383	CE-CBM13					
Cfla_3169	CE-CBM2					
Cfla_2913	GH6	Cel6A like				
Cfla_1896	GH6	Cel6B like				
Cfla_2912	GH6	Cel6A like				
Cfla_3563	GH9	Cel9A like				Y
Cfla_1515	GH9	Cel9B like				
Cfla_3024	GH10	Xyn10A like				
Cfla_2024	GH10	Xyn10A like				Y
Cfla_0376	GH10	Xyn10B like				
Cfla_2327	GH10	Xyn10B like				
Cfla_2487	GH10-GH10	Xyn10B like				Y
Cfla_3558	GH10-GH10	Xyn10B like				
Cfla_0905	GH10	Xyn10C like				Y
Cfla_0639	GH10	Xyn10C like				
Cfla_0246	GH11	Xyn11A like				
Cfla_0244	GH11	Xyn11A like				
Cfla_0245	GH11-GH10					
Cfla_3193	GH26					
Cfla_2848	GH62					
Cfla_3350	GH92					
Cfla_1313	PL3					
Cfla_0316	AA10	CBM33				
Cfla_3120	CBM2					Y
Cfla_1572	CBM2					
Cfla_0338	CBM2					
Cfla_1897	GH5	Cel5A like				
Cfla_2811	GH5	Cel5A like				
Cfla_0016	GH9	Cel9A like				
Cfla_2521	GH13-GH13					
Cfla_0456	GH27					
Cfla_0455	GH43					Y
Cfla_0179	GH43					
Cfla_3105	GH48	Cel48A like				
Cfla_3405	GH68					
Cfla_1332	GH81					
Cfla_2117	GH105					Y
Cfla_0638	CE4-GH10	Xyn10C like				
Cfla_0926	CE7					
Cfla_3031	GH9					Y
Cfla_2048	GH10					Y
Cfla_2327	GH10	Xyn10B like				
Cfla_0820	GH39				N	
Cfla_2997	GH39				N	
Cfla_1280	GH43					
Cfla_3528	GH51					
Cfla_2365	GT2-GT4				N	
Cfla_0539	GT35					
Cfla_1018	GDP-Man synth					

Fig 3. CAZyme content from *C. flavigena* culture supernatants. The proteins are identified by CAZY family, and if they have been previously characterized, the designation is given in CFI homologue column. The proteins expressed in media with CMC are indicated with a blue box or those from media with xylan with a green box. The yellow box identifies proteins that have no bioinformatically identified secretion leader (SEC or TAT). Since so few proteins have been characterized from *C. flavigena* supernatants we have not indicated the “new” proteins as we did for *C. fimi*. The tan box indicates this protein is unique to *C. flavigena*. The data are arranged by enzyme family for each group: both substrates, CMC only, followed by Xylan only.

doi:10.1371/journal.pone.0151186.g003

supernatant. Enzymes of a known support function for xylan degradation were also detected, these include α -L-arabinofuranosidases from GH43 (only 1 of 7 predicted), GH51 (3 of the 4 predicted) and one from GH62. The GH51 enzyme, Celf_3249, was seen in both supernatants but at very low levels. There were also 3 GH3 family members detected, one of which, Celf_2726, is a recently characterized β -xylosidase [21] which would be involved in further breakdown of the xylan hydrolysis products.

CAZymes secreted by *C. flavigena*

Cellulases. The CAZome from CFL was more complex with 52 CAZymes (Fig 3) compared to only 38 CAZymes detected from CFI (Fig 2). This is interesting as the genome of CFI has 20 more CAZymes than CFL but shows a lower complexity under our induction conditions. Far fewer CAZymes have been characterized from CFL compared to CFI, so the number of characterized enzymes detected in our supernatants is low. As there are so few characterized enzymes from the genome strain of CFL we chose to label them as “like” CFI enzymes based on sequence homology where possible. There have been no GH6 enzymes described from CFL, but based on sequence comparisons Cel6A/B are related to the CFI equivalents. The characterized GH5 enzyme from *C. flavigena* CDBB 531 [22] appears to be in the genome strain (Cfla_1897 which is Cel5A like or known as CelB). The characterized CBP105 endoglucanase from *C. flavigena* CDBB531 [23], is related to Cfla_0016 and Celf_0019 (Cel9A), and is indicated on the figure. A detailed comparison of the genome encoded CAZyme content of these two strains has been published [16] and will not be repeated here.

CFL has 4 predicted members of the AA10 (formerly CBM33) family of the copper-dependent lytic polysaccharide monooxygenases, 3 of which we observed, 2 of which appear to be produced only when grown on CMC, and one which is also produced during growth on xylan. This is a major difference from CFI where there is only one AA10 family member which is observed in both conditions. Presumably these are an important component of the degradative machinery for *Cellulomonas* as has been seen in other microorganisms [24].

Xylanases. It is notable that in the CFL CAZome are a large number of GH10 xylanases, some of which are tandem catalytic domains, in fact 12 GH10 catalytic domains were observed out of a possible 16 predicted in the genome. In terms of xylan degradation the accessory enzymes from GH39 (β -xylosidase) and GH/43/51 (α -L-arabinofuranosidases) are all expressed and a total of 6 of these were expressed in contrast to only 3 α -L-arabinofuranosidases in CFI. There were also 5 carbohydrate esterases or CE domains observed, which contrasts the CFI samples where a single CE7 and 3 CE-domains were seen. It appears that CFL has indeed a potent xylan degrading enzyme repertoire, certainly much more complex than CFI.

Additional CAZymes of interest. There are a number of enzymes observed which are not thought of as being part of the cellulolytic or xylanolytic enzyme complex. They can be seen in Table 2. There is a pectate lyase from PL3, a GH27 family member of unknown function only in the CMC sample, a GH68 levansucrase, a GH32 (active on fructose containing glycans), a GH92 α -mannosidase, and a GH105 unsaturated rhamnogalacturonidase. In addition a number of peptidoglycan active enzymes are also seen such as GT51, the peptidoglycan

Table 2. Detected cellulase and xylanase enzymes compared to the prediction.

Organism	CBM33 (AA10)	GH3	GH5	GH6	GH9	GH10	GH11	GH16	GH48	GH74
<i>C. fimi</i>	1/1	4/11	2/3	3*/4	2/4	4/5	1/1	1/3	1/1	1
<i>C. flavigena</i>	4/4	0/3	2/3	3/3	4/5	12/16	3/3	0	1/1	0

* The fourth GH6 Celf_0233 was present only as a single peptide and so is not counted in the total.

doi:10.1371/journal.pone.0151186.t002

transglycosylating enzymes, as well as a GH23 lytic transglycosylase, and peptidoglycan binding proteins.

Observed differences in CAZymes between the strains

Based on our data presented in Figs 2–4, we saw 38 GHs in CFi and 52 in CFL. The tally of observed GHs in known cellulase/xylanase families shows that 20/35 in the genome are found for CFi, and 28/39 for CFL (Table 2). One major difference in that total comes from the 12 GH10 proteins observed in CFI compared to only 4 GH10 seen in CFi. Another is the presence of 4 CFL expressed CBM33 (AA10) copper dependant lytic mono-oxygenases, compared to just one in CFi. In CFi supernatants 10/38 CAZymes are from families that are involved in other carbohydrate linkage degradation/formation. What was common to both strains were the presence of the accessory enzymes for acetyl-xylan breakdown, GH39/43/51, and in CFL carbohydrate esterase modules. This suggests that the control of expression of many CAZymes is not tightly regulated by carbon source, and that perhaps expression is leaky since pure carbohydrate sources in nature would be rare. It remains to be determined if control of expression of these enzymes is mediated by transcription factors as has been seen in the Clostridia [25].

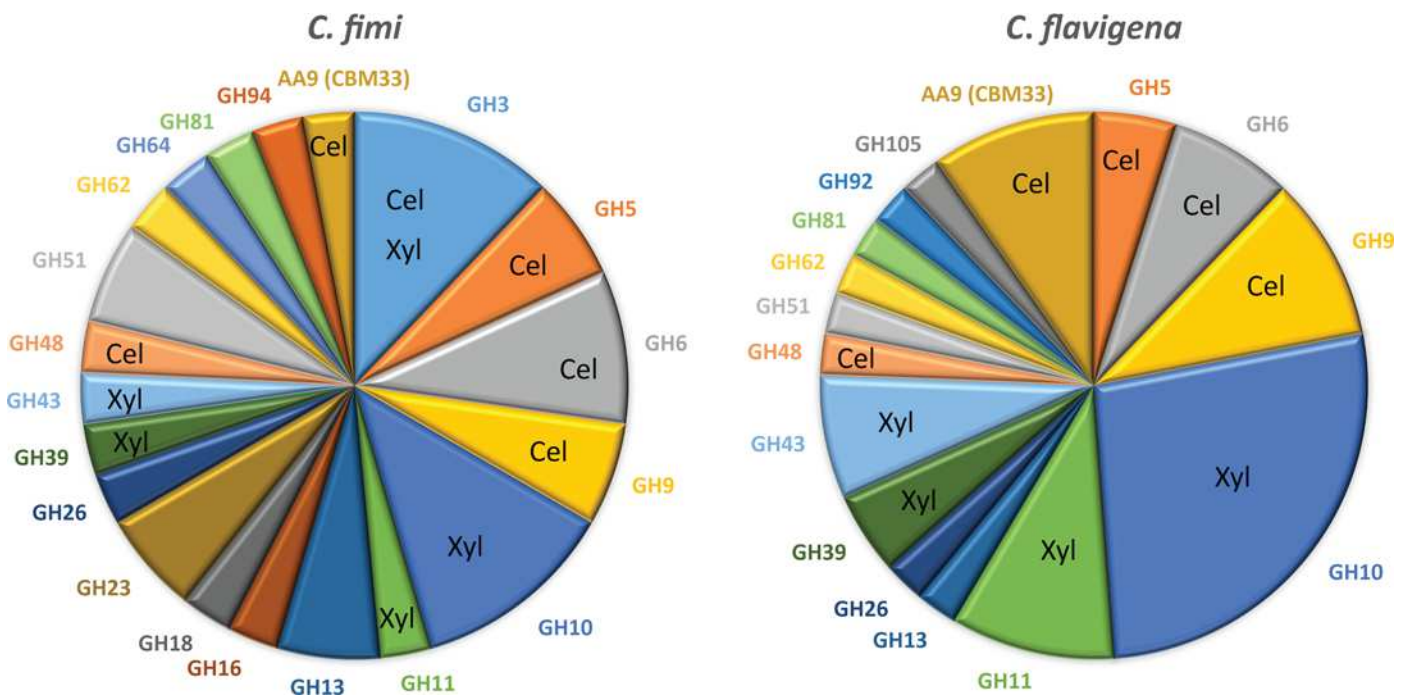


Fig 4. Summary of the observed CAZyme content. In order to facilitate visual comparison of the supernatant CAZymes, we summarized the content by enzyme family in a pie chart. Each family that had at least one member is plotted as a different coloured section of the chart. Those families that have known activities toward cellulose or xylan degradation are labelled with “Cel” or “Xyl”. The sections are proportional to the number of family members that were identified in each supernatant.

doi:10.1371/journal.pone.0151186.g004

Other CAZymes of interest. In CFI there were 8/52 CAZymes involved in other carbohydrate linkage specificity. One example in both CFI and CFI was a tandem GH13 catalytic module, normally associated with α -glucan degradation. A GH26 β -mannanase was also present in both strains, along with a GH92 α -mannosidase, and GDP-mannose synthase seen only in CFI. The expression of these may simply be constitutive and not linked to “induction” by the carbon sources we used for this study. Other examples only in CFI were enzymes which act on peptidoglycan, GT51, GT20, and GH23. It is not surprising to see peptidoglycan remodelling enzymes, as they would be present in any growing cell, and under conditions where increased export was needed they could be up-regulated to help with increased export machinery being incorporated in membrane.

A brief description of non-CAZYME proteins observed in our analysis. Our analysis of both CFI and CFI supernatants identified a large number of other proteins which fit our MAS-COT cut-off score of 50. These are shown in [S1](#) and [S2](#) Figs. We have classified these as proteases, periplasmic/extracellular, hypothetical and other. [S2 Table](#) lists a summary of the total number of those proteins which met our analysis criteria. Proteases were known to give rise to heterogeneity of cellulases in CFI [3], but these were never isolated or examined for their precise role in CAZyme production or action on biomass. Since the specificity of these proteases is not known the relevance to CAZyme function remains unknown.

The periplasmic/extracellular group of proteins represent a diverse group of proteins. Common to both species were extracellular solute binding proteins (ESBP) of families 1,3 and 5, which are typically membrane anchored lipoproteins associated with different classes of nutrient uptake[26]. *It could be that some of these are involved in oligosaccharide uptake from the digested carbon source.* Members of ESBP family 1 include carbohydrate ABC transporter associated substrate binding (CFI 7 members of which 2 are expressed only on xylan, CFI also 7 members, 1 of which is expressed only on xylan). Based on available literature (26), the members of ESBP family 3 do not appear to be involved in carbohydrate assimilation, but could be domains involved in peptidoglycan remodelling. There is one protein from CFI, Cfla_3696 which is annotated as a peptidoglycan binding protein, which again could be involved in cell wall remodelling. *These binding proteins in Gram-positive bacteria would be membrane anchored lipoproteins that presumably facilitate nutrient uptake.*

The group of proteins listed as “other” shows some proteins in common which are associated with carbohydrate utilization. Xylose and L-arabinose isomerase, and xylulokinase all involved in pentose metabolism. In addition there was a large secreted protein annotated simply as FN3 domain repeat protein, which was found in both strains, expressed in both carbon sources. These 2 proteins share 61% identity over more than 2000 amino acids, and blast search revealed it to be highly conserved in 11 Cellulomonas database entries, as well as many other actinobacteria. The large FN3 domain containing protein may be of further interest as it appears to be a highly conserved actinobacterial protein which is secreted by both of these strains. Celf_2339/Cfla_2198 are 2036 aa in length with 5 repeats of an FN3 domain. Many secreted hydrolases contain FN3 domains, and in *Clostridium thermocellum*, tandem FN3 domains from a Cbh9A (Cthe_0413) have been shown to disrupt the surface of cellulose fibres [27]. Again it is tempting to speculate that a protein that large could provide a scaffold for other secreted proteins, or could indeed interact with carbohydrate substrates through the FN3 domains.

Conclusions

Despite the availability of the genome sequences of many biomass degrading bacteria, we are only beginning to understand how the protein composition of the secretome changes in

response to a given feedstock. For this study, we chose to use soluble lab substrates as feedstocks in order to get a more complete snapshot of the secretome without the need to process residual substrate to recover bound enzymes. In the work presented here the accounting for the predicted CAZymes certainly shows significant CAZyme expression from both strains including most of the predicted cellulase and xylanase including all of the predicted AA10 enzymes which are most beneficial for utilization of insoluble substrates.

Generally speaking, the Gel-LC-MS approach worked well and identified many (but not all) of the expected proteins. It should be pointed out that some of the expected CAZymes have been identified by molecular cloning approaches only and have not been characterized in actual supernatants from the bacteria. The overall protein composition was reproducible between biological replicates. Furthermore, the analysis of the second biological repeat digests performed on the Q-ToF Ultima and the LTQ-Orbitrap XL mass spectrometers identified the same major proteins though the overall peptide coverage and scores were better for the latter instrument (S1 Table). This is attributable to its faster acquisition speed. Not many intracellular proteins were observed and some of those that were detected are known to be involved in biomass utilization, and so may have been truly up-regulated under our growth conditions. Overall, we believe this data describes the basic secretome for these important biomass degrading bacteria on two relevant carbohydrate sources.

As a follow-up to this study into the secretomes of *C. fimi* and *C. flavigena*, we are working to determine the specificity of some of the newly identified CAZymes (Saxena et al in preparation). We are also now examining the glycoproteome of *Cellulomonas*. Many cell surface proteins as well as secreted proteins appear to be mannosylated as has been seen in other actinobacteria [28–30]. Our basic secretome data will provide an excellent point of reference for this comparative glycoproteome analysis between CFi and CFL and related actinobacteria.

Supporting Information

S1 Fig. Non-CAZyme content from *C. fimi* culture supernatants. The proteins are identified by genome annotation (if there was one). The proteins expressed in media with CMC are indicated with a blue box or those from media with xylan with a green box. The yellow box identifies proteins that have no bioinformatically identified secretion leader (SEC or TAT). The tan box indicates this protein is unique to *C. fimi*, and if there was a homologue in CFL this is indicated with the locus ID in the last column.
(TIF)

S2 Fig. Non-CAZyme content from *C. flavigena* culture supernatants. The proteins are identified by genome annotation (if there was one). The proteins expressed in media with CMC are indicated with a blue box or those from media with xylan with a green box. The yellow box identifies proteins that have no bioinformatically identified secretion leader (SEC or TAT). The tan box indicates this protein is unique to *C. flavigena*, and if there was a homologue in CFi this is indicated with the locus ID in the last column.
(TIF)

S1 Table. Proteomic data collected from *C. fimi* and *C. flavigena*. Protein identification was performed as indicated in the methods and the resulting data are summarized here. *C. fimi* and *C. flavigena* protein homologues are indicated along with annotation from NCBI database searches. In order to be counted, a protein had to be found in at least 1 of the 2 supernatants (CMC or Xylan induced) in both biological replicates. The data are arranged by decreasing MASCOT score and all of the peptide counting information is also given. The colour indicators are green if a supernatant sample contained peptides from that protein, or red if the sample did

not have peptides from that sample.
(XLS)

S2 Table. Protein information used to generate the figures. All of the data used to generate protein information figures is in the spreadsheet. The sheets contain data for the individual figures shown in the paper and in the supplemental material.

(XLSX)

Acknowledgments

We acknowledge Professors Harry Brumer and Emma Master for helpful comments regarding the manuscript.

Author Contributions

Conceived and designed the experiments: WWW JK. Performed the experiments: DB SF AR HS TE. Analyzed the data: WWW AR SF HS TE JK. Contributed reagents/materials/analysis tools: DB SF AR JK. Wrote the paper: WWW HS TE JK.

References

1. Han YW, Srinivasan VR. Isolation and characterization of a cellulose-utilizing bacterium. *Applied microbiology*. 1968; 16(8):1140–5. Epub 1968/08/01. PMID: [5675505](#); PubMed Central PMCID: PMCPmc547609.
2. Béguin P, Eisen H, Roupas A. Free and Cellulose-bound Cellulases in a Cellulomonas Species. *Journal of General Microbiology*. 1977; 101(2):191–6. doi: [10.1099/00221287-101-2-191](#)
3. Langsford ML, Gilkes NR, Wakarchuk WW, Kilburn DG, Miller RC, Warren RAJ. The Cellulase System of Cellulomonas fimi. *Journal of General Microbiology*. 1984; 130(6):1367–76. doi: [10.1099/00221287-130-6-1367](#)
4. Kólios G, Papadopoulos GK, Roussis I, Drinas C. Immunological versatility and carbon regulation of Cellulomonas fimi endo-1,4-beta-glucanases. *Biotechnol Appl Biochem*. 1991; 14(3):365–77. Epub 1991/12/01. PMID: [1777121](#).
5. Sandercock LE, Meinke A, Gilkes NR, Kilburn DG, Warren RAJ. Degradation of cellulases in cultures of Cellulomonas fimi. *FEMS Microbiology Letters*. 1996; 143(1):7–12. doi: [10.1111/j.1574-6968.1996.tb08453.x](#)
6. Whittle DJ, Kilburn DG, Warren RAJ, Miller RC Jr. Molecular cloning of a Cellulomonas fimi cellulase gene in Escherichia coli: Recombinant DNA; plasmid pBR322; immunoassay. *Gene*. 1982; 17(2):139–45. PMID: [7044898](#)
7. Gilkes NR, Kilburn DG, Langsford ML, Miller RC, Wakarchuk WW, Warren RAJ, et al. Isolation and Characterization of Escherichia coli Clones Expressing Cellulase Genes from Cellulomonas fimi. *Journal of General Microbiology*. 1984; 130(6):1377–84. doi: [10.1099/00221287-130-6-1377](#)
8. Meinke A, Braun C, Gilkes NR, Kilburn DG, Miller RC Jr, Warren RA. Unusual sequence organization in CenB, an inverting endoglucanase from Cellulomonas fimi. *J Bacteriol*. 1991; 173(1):308–14. PMID: [1987122](#); PubMed Central PMCID: PMC207188.
9. Moser B, Gilkes NR, Kilburn DG, Warren RA, Miller RC Jr. Purification and characterization of endoglucanase C of Cellulomonas fimi, cloning of the gene, and analysis of in vivo transcripts of the gene. *Appl Environ Microbiol*. 1989; 55(10):2480–7. PMID: [2604391](#); PubMed Central PMCID: PMC203108.
10. Meinke A, Gilkes NR, Kwan E, Kilburn DG, Warren RA, Miller RC Jr. Cellobiohydrolase A (CbhA) from the cellulolytic bacterium Cellulomonas fimi is a beta-1,4-exocellobiohydrolase analogous to Trichoderma reesei CBH II. *Mol Microbiol*. 1994; 12(3):413–22. PMID: [8065260](#).
11. Shen H, Tomme P, Meinke A, Gilkes NR, Kilburn DG, Warren RA, et al. Stereochemical course of hydrolysis catalysed by Cellulomonas fimi CenE, a member of a new family of beta-1,4-glucanases. *Biochem Biophys Res Commun*. 1994; 199(3):1223–8. PMID: [8147863](#).
12. Clarke JH, Laurie JI, Gilbert HJ, Hazlewood GP. Multiple xylanases of Cellulomonas fimi are encoded by distinct genes. *FEMS Microbiol Lett*. 1991; 67(3):305–9. Epub 1991/10/15. PMID: [1769538](#).
13. Hekmat O, Kim YW, Williams SJ, He S, Withers SG. Active-site peptide "fingerprinting" of glycosidases in complex mixtures by mass spectrometry. Discovery of a novel retaining beta-1,4-glycanase in

- Cellulomonas fimi. The Journal of biological chemistry. 2005; 280(42):35126–35. Epub 2005/08/09. doi: [10.1074/jbc.M508434200](https://doi.org/10.1074/jbc.M508434200) PMID: [16085650](https://pubmed.ncbi.nlm.nih.gov/16085650/).
14. Sanchez-Herrera LM, Ramos-Valdivia AC, de la Torre M, Salgado LM, Ponce-Noyola T. Differential expression of cellulases and xylanases by Cellulomonas flavigena grown on different carbon sources. Appl Microbiol Biotechnol. 2007; 77(3):589–95. Epub 2007/09/28. doi: [10.1007/s00253-007-1190-7](https://doi.org/10.1007/s00253-007-1190-7) PMID: [17899068](https://pubmed.ncbi.nlm.nih.gov/17899068/).
 15. Cantarel BL, Coutinho PM, Rancurel C, Bernard T, Lombard V, Henrissat B. The Carbohydrate-Active EnZymes database (CAZy): an expert resource for Glycogenomics. Nucleic Acids Research. 2009; 37 (suppl_1):D233–D8.
 16. Christopherson MR, Suen G, Bramhacharya S, Jewell KA, Aylward FO, Mead D, et al. The genome sequences of Cellulomonas fimi and "Cellvibrio gilvus" reveal the cellulolytic strategies of two facultative anaerobes, transfer of "Cellvibrio gilvus" to the genus Cellulomonas, and proposal of Cellulomonas gilvus sp. nov. PLoS One. 2013; 8(1):e53954. doi: [10.1371/journal.pone.0053954](https://doi.org/10.1371/journal.pone.0053954) PMID: [23342046](https://pubmed.ncbi.nlm.nih.gov/23342046/); PubMed Central PMCID: PMC3544764.
 17. Adav SS, Cheow ESH, Ravindran A, Dutta B, Sze SK. Label free quantitative proteomic analysis of secretome by Thermobifida fusca on different lignocellulosic biomass. Journal of Proteomics. 2012; 75 (12):3694–706. doi: <http://dx.doi.org/10.1016/j.jprot.2012.04.031>. doi: [10.1016/j.jprot.2012.04.031](https://doi.org/10.1016/j.jprot.2012.04.031) PMID: [22575269](https://pubmed.ncbi.nlm.nih.gov/22575269/)
 18. Takasuka TE, Book AJ, Lewin GR, Currie CR, Fox BG. Aerobic deconstruction of cellulosic biomass by an insect-associated Streptomyces. Scientific Reports. 2013; 3:1030. doi: [10.1038/srep01030](https://doi.org/10.1038/srep01030) PMID: [PMC3538285](https://pubmed.ncbi.nlm.nih.gov/PMC3538285/).
 19. Fincher G, Mark B, Brumer H. GH3 Cazymes July 4, 2014. Accessed: 4 July 2014. Available: http://www.cazypedia.org/index.php?title=Glycoside_Hydrolase_Family_3&oldid=9716.
 20. Hekmat O, Florizone C, Kim YW, Eltis LD, Warren RA, Withers SG. Specificity fingerprinting of retaining beta-1,4-glycanases in the Cellulomonas fimi secretome using two fluorescent mechanism-based probes. ChemBiochem: a European journal of chemical biology. 2007; 8(17):2125–32. Epub 2007/10/24. doi: [10.1002/cbic.200700481](https://doi.org/10.1002/cbic.200700481) PMID: [17952884](https://pubmed.ncbi.nlm.nih.gov/17952884/).
 21. Gao J, Wakarchuk W. Characterization of five beta-glycoside hydrolases from Cellulomonas fimi ATCC 484. J Bacteriol. 2014; 196(23):4103–10. Epub 2014/09/17. doi: [10.1128/jb.02194-14](https://doi.org/10.1128/jb.02194-14) PMID: [25225266](https://pubmed.ncbi.nlm.nih.gov/25225266/); PubMed Central PMCID: PMC4248878.
 22. Perez-Avalos O, Sanchez-Herrera LM, Salgado LM, Ponce-Noyola T. A bifunctional endoglucanase/endoxylanase from Cellulomonas flavigena with potential use in industrial processes at different pH. Current Microbiology. 2008; 57(1):39–44. Epub 2008/04/02. doi: [10.1007/s00284-008-9149-1](https://doi.org/10.1007/s00284-008-9149-1) PMID: [18379842](https://pubmed.ncbi.nlm.nih.gov/18379842/).
 23. Mejia-Castillo T, Hidalgo-Lara ME, Briebe LG, Ortega-Lopez J. Purification, characterization and modular organization of a cellulose-binding protein, CBP105, a processive beta-1,4-endoglucanase from Cellulomonas flavigena. Biotechnol Lett. 2008; 30(4):681–7. Epub 2007/11/07. doi: [10.1007/s10529-007-9589-x](https://doi.org/10.1007/s10529-007-9589-x) PMID: [17985078](https://pubmed.ncbi.nlm.nih.gov/17985078/).
 24. Hemsworth GR, Davies GJ, Walton PH. Recent insights into copper-containing lytic polysaccharide mono-oxygenases. Curr Opin Struct Biol. 2013; 23(5):660–8. Epub 2013/06/19. doi: [10.1016/j.sbi.2013.05.006](https://doi.org/10.1016/j.sbi.2013.05.006) PMID: [23769965](https://pubmed.ncbi.nlm.nih.gov/23769965/).
 25. Nataf Y, Bahari L, Kahel-Raifer H, Borovok I, Lamed R, Bayer EA, et al. Clostridium thermocellum cellulosomal genes are regulated by extracytoplasmic polysaccharides via alternative sigma factors. Proc Natl Acad Sci U S A. 2010; 107(43):18646–51. doi: [10.1073/pnas.1012175107](https://doi.org/10.1073/pnas.1012175107) PMID: [20937888](https://pubmed.ncbi.nlm.nih.gov/20937888/)
 26. Tam R, Saier MH. Structural, functional, and evolutionary relationships among extracellular solute-binding receptors of bacteria. Microbiological reviews. 1993; 57(2):320–46. PMID: [8336670](https://pubmed.ncbi.nlm.nih.gov/8336670/)
 27. Kataeva IA, Seidel RD 3rd, Shah A, West LT, Li XL, Ljungdahl LG. The fibronectin type 3-like repeat from the Clostridium thermocellum cellobiohydrolase CbhA promotes hydrolysis of cellulose by modifying its surface. Appl Environ Microbiol. 2002; 68(9):4292–300. Epub 2002/08/30. PMID: [12200278](https://pubmed.ncbi.nlm.nih.gov/12200278/); PubMed Central PMCID: PMC124122.
 28. González-Zamorano M, Mendoza-Hernández G, Xolalpa W, Parada C, Vallecillo AJ, Bigi F, et al. Mycobacterium tuberculosis Glycoproteomics Based on ConA-Lectin Affinity Capture of Mannosylated Proteins. Journal of Proteome Research. 2009; 8(2):721–33. doi: [10.1021/pr800756a](https://doi.org/10.1021/pr800756a) PMID: [19196185](https://pubmed.ncbi.nlm.nih.gov/19196185/)
 29. Espitia C, Servin-Gonzalez L, Mancilla R. New insights into protein O-mannosylation in actinomycetes. Molecular BioSystems. 2010; 6(5):775–81. Epub 2010/06/23. doi: [10.1039/b916394h](https://doi.org/10.1039/b916394h) PMID: [20567761](https://pubmed.ncbi.nlm.nih.gov/20567761/).
 30. VanderVen BC, Harder JD, Crick DC, Belisle JT. Export-Mediated Assembly of Mycobacterial Glycoproteins Parallels Eukaryotic Pathways. Science. 2005; 309(5736):941–3. PMID: [16081738](https://pubmed.ncbi.nlm.nih.gov/16081738/)