

## NRC Publications Archive Archives des publications du CNRC

### Subarcminute localization of 13 repeating fast radio bursts detected by CHIME/FRB

Michilli, Daniele; Bhardwaj, Mohit; Brar, Charanjot; Gaensler, B. M.; Kaspi, Victoria M.; Kirichenko, Aida; Masui, Kiyoshi W.; Mckinven, Ryan; Ng, Cherry; Patel, Chitrang; Sand, Ketan R.; Scholz, Paul; Shin, Kaitlyn; Siegel, Seth R.; Stairs, Ingrid; Cassanelli, Tomas; Cook, Amanda M.; Dobbs, Matt; Dong, Fengqiu Adam; Fonseca, Emmanuel; Ibik, Adaeze; Kaczmarek, Jane; Leung, Calvin; Pearlman, Aaron B.; Petroff, Emily; Pleunis, Ziggy; Rafiei-Ravandi, Masoud; Sanghavi, Pranav; Shaw, J. Richard; Tendulkar, Shriharsh P.

This publication could be one of several versions: author's original, accepted manuscript or the publisher's version. / La version de cette publication peut être l'une des suivantes : la version prépublication de l'auteur, la version acceptée du manuscrit ou la version de l'éditeur.

For the publisher's version, please access the DOI link below. / Pour consulter la version de l'éditeur, utilisez le lien DOI ci-dessous.

#### **Publisher's version / Version de l'éditeur:**

<https://doi.org/10.3847/1538-4357/accf89>

*The Astrophysical Journal*, 950, 2, pp. 1-12, 2023-06-20

#### **NRC Publications Archive Record / Notice des Archives des publications du CNRC :**

<https://nrc-publications.canada.ca/eng/view/object/?id=17ce829b-c526-41e1-adf8-ef7909e1db61>

<https://publications-cnrc.canada.ca/fra/voir/objet/?id=17ce829b-c526-41e1-adf8-ef7909e1db61>

Access and use of this website and the material on it are subject to the Terms and Conditions set forth at

<https://nrc-publications.canada.ca/eng/copyright>

READ THESE TERMS AND CONDITIONS CAREFULLY BEFORE USING THIS WEBSITE.

L'accès à ce site Web et l'utilisation de son contenu sont assujettis aux conditions présentées dans le site

<https://publications-cnrc.canada.ca/fra/droits>

LISEZ CES CONDITIONS ATTENTIVEMENT AVANT D'UTILISER CE SITE WEB.

**Questions?** Contact the NRC Publications Archive team at

PublicationsArchive-ArchivesPublications@nrc-cnrc.gc.ca. If you wish to email the authors directly, please see the first page of the publication for their contact information.

**Vous avez des questions?** Nous pouvons vous aider. Pour communiquer directement avec un auteur, consultez la première page de la revue dans laquelle son article a été publié afin de trouver ses coordonnées. Si vous n'arrivez pas à les repérer, communiquez avec nous à PublicationsArchive-ArchivesPublications@nrc-cnrc.gc.ca.



# Subarcminute Localization of 13 Repeating Fast Radio Bursts Detected by CHIME/FRB

Daniele Michilli<sup>1,2</sup>, Mohit Bhardwaj<sup>3,4,5</sup>, Charanjot Brar<sup>3,4</sup>, B. M. Gaensler<sup>6,7</sup>, Victoria M. Kaspi<sup>3,4</sup>, Aida Kirichenko<sup>8,9</sup>, Kiyoshi W. Masui<sup>1,2</sup>, Ryan Mckinven<sup>3,4</sup>, Cherry Ng<sup>6</sup>, Chitrang Patel<sup>3</sup>, Ketan R. Sand<sup>3,4</sup>, Paul Scholz<sup>6</sup>, Kaitlyn Shin<sup>1,2</sup>, Seth R. Siegel<sup>3,4,10</sup>, Ingrid Stairs<sup>11</sup>, Tomas Cassanelli<sup>12</sup>, Amanda M. Cook<sup>6,7</sup>, Matt Dobbs<sup>3,4</sup>, Fengqiu Adam Dong<sup>11</sup>, Emmanuel Fonseca<sup>13,14</sup>, Adayze Ibik<sup>6,7</sup>, Jane Kaczmarek<sup>15</sup>, Calvin Leung<sup>1,2</sup>, Aaron B. Pearlman<sup>3,4</sup>, Emily Petroff<sup>3,4</sup>, Ziggy Pleunis<sup>6</sup>, Masoud Rafiei-Ravandi<sup>3,4</sup>, Pranav Sanghavi<sup>16</sup>, J. Richard Shaw<sup>11</sup>, and Shriharsh P. Tendulkar<sup>17,18</sup>

<sup>1</sup> MIT Kavli Institute for Astrophysics and Space Research, Massachusetts Institute of Technology, 77 Massachusetts Ave, Cambridge, MA 02139, USA  
[danielemichilli@gmail.com](mailto:danielemichilli@gmail.com)

<sup>2</sup> Department of Physics, Massachusetts Institute of Technology, 77 Massachusetts Ave, Cambridge, MA 02139, USA

<sup>3</sup> Department of Physics, McGill University, 3600 rue University, Montréal, QC H3A 2T8, Canada

<sup>4</sup> Trottier Space Institute at McGill University, 3550 rue University, Montréal, QC H3A 2A7, Canada

<sup>5</sup> Department of Physics, Carnegie Mellon University, 5000 Forbes Avenue, Pittsburgh, PA 15213, USA

<sup>6</sup> Dunlap Institute for Astronomy and Astrophysics, 50 St. George Street, University of Toronto, ON M5S 3H4, Canada

<sup>7</sup> David A. Dunlap Department of Astronomy and Astrophysics, 50 St. George Street, University of Toronto, ON M5S 3H4, Canada

<sup>8</sup> Instituto de Astronomía, Universidad Nacional Autónoma de México, Apdo. Postal 877, Ensenada, Baja California 22800, México

<sup>9</sup> Ioffe Institute, 26 Politekhnicheskaya St., St. Petersburg 194021, Russia

<sup>10</sup> Perimeter Institute for Theoretical Physics, 31 Caroline Street N, Waterloo, ON N2S 2YL, Canada

<sup>11</sup> Department of Physics and Astronomy, University of British Columbia, 6224 Agricultural Road, Vancouver, BC V6T 1Z1 Canada

<sup>12</sup> Department of Electrical Engineering, Universidad de Chile, Av. Tupper 2007, Santiago 8370451, Chile

<sup>13</sup> Department of Physics and Astronomy, West Virginia University, P.O. Box 6315, Morgantown, WV 26506, USA

<sup>14</sup> Center for Gravitational Waves and Cosmology, West Virginia University, Chestnut Ridge Research Building, Morgantown, WV 26505, USA

<sup>15</sup> Dominion Radio Astrophysical Observatory, Herzberg Research Centre for Astronomy and Astrophysics, National Research Council Canada, P.O. Box 248, Penticton, BC V2A 6J9, Canada

<sup>16</sup> Department of Physics, Yale University, New Haven, CT 06520, USA

<sup>17</sup> Department of Astronomy and Astrophysics, Tata Institute of Fundamental Research, Mumbai 400005, India

<sup>18</sup> National Centre for Radio Astrophysics, Post Bag 3, Ganeshkhind, Pune 411007, India

Received 2022 December 22; revised 2023 April 2; accepted 2023 April 21; published 2023 June 16

## Abstract

We report on improved sky localizations of 13 repeating fast radio bursts (FRBs) discovered by CHIME/FRB via the use of interferometric techniques on channelized voltages from the telescope. These so-called “baseband localizations” improve the localization uncertainty area presented in past studies by more than three orders of magnitude. The improved localization regions are provided for the full sample of FRBs to enable follow-up studies. The localization uncertainties, together with the limits on the source distances from their dispersion measures, allow us to identify likely host galaxies for two of the FRB sources. FRB 20180814A lives in a massive passive red spiral at  $z \sim 0.068$  with very little indication of star formation, while FRB 20190303A resides in a merging pair of spiral galaxies at  $z \sim 0.064$  undergoing significant star formation. These galaxies show very different characteristics, further confirming the presence of FRB progenitors in a variety of environments even among the repeating subclass.

*Unified Astronomy Thesaurus concepts:* [Radio transient sources \(2008\)](#)

## 1. Introduction

Fast radio bursts (FRBs; Lorimer et al. 2007; Thornton et al. 2013) are a class of fast radio transients visible from distant galaxies. Despite the detection of FRB-like radio signals from a Galactic magnetar (Bochenek et al. 2020; CHIME/FRB Collaboration et al. 2020), the physical origin of the FRB population is still debated, and many models are still viable (Platts et al. 2019). Models of FRB progenitors can be constrained by studying the host galaxies of FRB sources (e.g., Bhandari et al. 2020; Heintz et al. 2020). Precise localizations of FRB sources observed to emit multiple bursts (Spitler et al. 2016) allow follow-up observations with instruments having a relatively small field of view (e.g., Chatterjee et al. 2017; Marcote et al. 2020). In this respect, repeating FRB sources

located in the local universe are particularly interesting for sensitive multiwavelength observations (e.g., Scholz et al. 2017). Also, FRBs localized to specific host galaxies can be used as cosmological probes because their redshift can be compared to the dispersion induced in their signal by the integrated column density of free electrons along the line of sight, quantified by their dispersion measure (DM; McQuinn 2014). Macquart et al. (2020) used eight FRB sources localized to specific galaxies to confirm the presence of the universe’s so-called “missing baryons” in the intergalactic medium (IGM). However, only a limited number of FRBs have been localized so far (Heintz et al. 2020; Gordon et al. 2023). This is due to the challenge of detecting a large number of FRBs using instruments with a high angular resolution, which traditionally have a smaller field of view. Currently, the leading facility for the number of localized FRB sources is ASKAP (e.g., Bannister et al. 2019; Bhandari et al. 2020). More recently, an increasing number of galaxy associations are being measured by DSA-110 (e.g., Ravi et al. 2019; Sharma et al. 2023) and by MeerKAT (e.g., Driessen et al. 2023; Jankowski et al. 2023).

Precise localizations have also been obtained by the Very Large Array (VLA; e.g., Chatterjee et al. 2017; Law et al. 2020), and by the European VLBI Network (EVN; e.g., Marcote et al. 2020; Nimmo et al. 2022). In the next few years, this number will increase by orders of magnitude when a new generation of telescopes currently under development will start their observations (e.g., Hallinan et al. 2019b; Vanderlinde et al. 2019; Leung et al. 2021; Lin et al. 2022).

The Canadian Hydrogen Intensity Mapping Experiment (CHIME; CHIME Collaboration et al. 2022) is detecting hundreds of FRBs per year (CHIME/FRB Collaboration et al. 2021) thanks to its dedicated CHIME/FRB backend (CHIME/FRB Collaboration et al. 2018). A fraction of these FRBs have been observed to repeat (e.g., CHIME/FRB Collaboration et al. 2019a, 2019b; Fonseca et al. 2020). We collected raw channelized “baseband” data for some of these repeating FRB sources. By using these baseband data, the localization precision can be improved up to  $\sim 11''$  for bright bursts (Michilli et al. 2021), an area  $\gtrsim 3$  orders of magnitude smaller than measured at discovery. The association of two FRB sources to nearby galaxies measured with CHIME/FRB alone thanks to baseband data has been recently presented (Bhardwaj et al. 2021b, 2021a). Currently, the CHIME/FRB Outriggers project is under development to improve the localization precision of CHIME to  $\sim 50$  mas using three additional radio telescopes (Leung et al. 2021; Cassanelli et al. 2022; Mena-Parra et al. 2022). Until these outtrigger telescopes are available, however, the localization precision obtainable from the baseband data remains the state of the art for most FRBs discovered by CHIME.

In the following, we present the positions of 13 repeating FRBs discovered by CHIME/FRB (CHIME/FRB Collaboration et al. 2019a, 2019b; Fonseca et al. 2020) refined by using stored baseband data (Michilli et al. 2021) and a likely host association for two of them. The polarization properties of the bursts are presented by Mckinven et al. (2023). A summary of the observational setup and data analysis is described in Section 2 and the source positions are presented in Section 3, together with proposed galaxy associations for two FRBs. The implications of these new localizations are discussed in Section 4, and conclusions are drawn in Section 5.

## 2. Observations and Data Analysis

The hardware and design of CHIME is discussed by CHIME Collaboration et al. (2022), the detection of FRBs with CHIME/FRB and the capture of baseband data are described in detail by CHIME/FRB Collaboration et al. (2018), the pipeline to process such baseband data is presented by Michilli et al. (2021), and the method used to identify possible hosts is outlined by Bhardwaj et al. (2021b). A summary of these steps is given here, together with a description of the optical observations used to refine the redshifts of galaxies in the FRB fields.

### 2.1. FRB Detection and Baseband Data

CHIME is a radio telescope composed of four cylindrical reflectors oriented south–north and instrumented with 1024 dual-polarization antennas that monitor the sky over 400–800 MHz. An FPGA-based F-engine digitizes the data and applies a polyphase filter bank that divides the bandwidth into 1024 frequency channels and produces the channelized baseband data used in this study. Subsequently, a GPU-based X-engine correlates the signal from different antennas and the CHIME/FRB backend searches

for FRB-like signals in the total intensity data from 1024 fast Fourier transform (FFT) beams covering the telescope’s field of view. When a candidate event is detected by this real-time detection pipeline,  $\sim 100$  ms of baseband data recorded by the F-engine are stored around the burst.

### 2.2. Baseband Localization

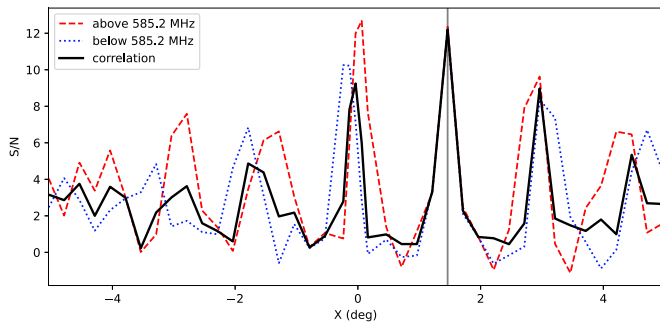
An offline pipeline is run on the baseband data to produce a number of scientific outputs automatically. Among these, the initial source localization is refined with interferometric techniques. A grid of  $5 \times 5$  beams is formed around the initial localization and a signal-to-noise ratio (S/N) value is calculated for each of them. The resulting intensity map of the signal is fitted with a 2D Gaussian function approximating the sensitivity response of CHIME’s formed beams. We used a sample of sources with known positions at different sky positions to assess the localization capability of the baseband processing pipeline and to estimate the impact of unaccounted systematic effects. With a least-squares fit, we measured a calibration for our localizations  $\theta$  and their uncertainties  $\sigma$  given by Michilli et al. (2021)

$$\begin{aligned}\theta_x^i \pm \sigma_x^i &\rightarrow (\theta_x^i + 0.16') \pm (\sqrt{(1.1\sigma_x^i)^2 + 0.19^2}), \\ \theta_y^i \pm \sigma_y^i &\rightarrow (\theta_y^i + 0.17') \pm (\sqrt{(1.1\sigma_y^i)^2 + 19^2}),\end{aligned}\quad (1)$$

where  $x$  and  $y$  are celestial coordinates centered on CHIME and running in the east–west ( $x$ ) and south–north ( $y$ ) directions. All the positions presented in this paper have been corrected with this calibration. For each source, we calculated a weighted mean position based on the localization region of single bursts, accounting for the systematics defined in Equation (1).

Two FRB source localizations measured by CHIME/FRB using this calibration have been independently verified by other interferometers. These are FRBs 20200120E, where the CHIME/FRB baseband localization reported by Bhardwaj et al. (2021a) has been confirmed and refined with the use of very long baseline interferometry (VLBI) by Kirsten et al. (2022); and 20220912A, whose baseband localization measured by CHIME/FRB (Mckinven & CHIME/FRB Collaboration 2022) is compatible with the more precise position obtained by Ravi et al. (2023) with DSA-110. They provide an independent validation of CHIME/FRB’s localization capabilities.

Because of the telescope geometry, CHIME’s formed beams have strong side lobes in the east–west direction spaced roughly 1 (2) degrees at 800 (400) MHz. To identify unambiguously the correct lobe where the source is located, we use the variation of the spacing between lobes as a function of frequency. This is straightforward for radio sources with a broadband spectrum, which will be detected as broadband only in the correct lobe. However, it can be challenging for signals with narrowband spectra that can mimic the telescope response in the side lobes, as is often the case with repeating FRBs (Pleunis et al. 2021). Of course, it is theoretically possible to form beams in every potential lobe and select the direction where the signal is strongest. However, this would be prohibitively computationally expensive to sample the rapid spatial variability of the telescope response properly. For this reason, we have developed the diagnostic plot visible in Figure 1, where the frequency bandwidth is divided into two parts so that each one contains half of the signal measured from a certain source. A total of 53 adjacent beams are formed in the east–west direction around the best source position spanning



**Figure 1.** Signal strength of FRB 20190117A, burst 2, as a function of the local coordinate  $x$ , centered on CHIME and running from east to west, in degrees of arc. The signal has been divided into two frequency bands around a frequency  $\nu_0 = 585.2$  MHz, chosen to have the same S/N in the two bands. The blue dotted line represents the signal measured below  $\nu_0$ , while the red dashed line is measured above  $\nu_0$ . The black line is the normalized product of the previous two and the vertical gray line highlights the location of its maximum.

$5^\circ$  on each side, i.e., covering a total of five telescope lobes at 400 MHz. The signal strength is measured for the two parts of the band independently and the main lobe is identified where the peaks at the two frequencies align. This is highlighted by the normalized product of the signal at the two frequencies. If the FRB position from the initial  $5 \times 5$  beam grid is not found to be in the correct lobe, as indicated by the sidelobe diagnostic in Figure 1, a new grid of  $5 \times 5$  beams is formed and the localization is calculated again. Given the low probability of chance alignment due to the small uncertainty regions and the similar DMs, we verify that each FRB source is localized to the correct lobe of the telescope by applying this method to one burst from each FRB source, typically, the one with the broadest or brightest spectrum.

### 2.3. Identification of Host Galaxies

The relatively compact design of CHIME, whose maximum baseline is  $\sim 100$  m, and the low observing frequencies (400–800 MHz), limit the localization capability of the instrument. In fact, after accounting for systematic effects, Michilli et al. (2021) estimated a maximum possible localization precision of  $\sim 11''$ , insufficient to pinpoint a single host galaxy for most of the detected FRBs. However, the DM of an FRB can be used to estimate the maximum distance that the source can have assuming models of electron densities in the different media traveled by the radio waves. The details of this method are provided by Bhardwaj et al. (2021b).

In summary, FRBs with a low DM excess with respect to Milky Way models will have a low upper limit on their source redshift. This can be used to place a limit on the redshift of host galaxy candidates in the localization region of an FRB. To this end, a Bayesian framework was developed by modeling the different contributions to the total FRB DM with priors motivated by previous studies. As opposed to other analyses that calculate the chance coincidence probability of having an association between an FRB and a certain galaxy (such as the Probabilistic Association of Transients to their Hosts, PATH; Aggarwal et al. 2021), our software only returns a list of possible galaxy hosts cataloged in the localization region. With our analysis, the DM distribution of the FRBs detected by CHIME/FRB implies that a small fraction ( $\sim 1\%$ ) will only have one likely host within this baseband localization region.

As opposed to Bhardwaj et al. (2021b), we have used as priors on the host DM contribution a log-normal distribution

with a mean of  $96.4 \text{ pc cm}^{-3}$  and a standard deviation of 0.9, values based on the work of Zhang et al. (2020).

### 2.4. Optical Spectroscopic Observations

To obtain spectroscopic redshifts for galaxy host candidates, we used the Optical System for Imaging and low-intermediate Resolution Integrated Spectroscopy (OSIRIS)<sup>19</sup> mounted at the Gran Telescopio Canarias (GTC). Details about the instrument configuration for this observation and the data analysis are reported in Appendix A.

## 3. Results

The positions of the FRB sources measured with baseband data from CHIME/FRB are reported in Table 1. The positions of single events from each repeater can be found in Appendix B. The localization precision and low DM allowed us to obtain an interesting galaxy association for two of the FRB sources reported here, namely FRBs 20180814A and 20190303A. The localization regions for the rest of the sample contain too many galaxies to draw significant conclusions on plausible host galaxy candidates.

### 3.1. FRB 20180814A

The low  $\text{DM} = 189.4(4) \text{ pc cm}^{-3}$  of this source together with a significant Galactic disk contribution of  $\text{DM}_{\text{MW}} = 87$  (Cordes & Lazio 2002) to 108 (Yao et al. 2017)  $\text{pc cm}^{-3}$  implies that the host galaxy must be in the local universe. Using a marginalized posterior of the host galaxy redshift (see Section 2.3), we obtain a one-sided 95% Bayesian upper limit on the redshift  $z < 0.091$ .

We searched the PanSTARRS-DR1 catalog (Chambers et al. 2016) for host candidates within the 86% localization region (corresponding to the  $2\sigma$  confidence region for a bivariate normal distribution) of the FRB, and found eight sources that are listed in Table 2 and plotted in Figure 2 within the FRB localization region.

#### 3.1.1. Spectroscopic Redshift

Most of the galaxies in the field do not have a spectroscopic redshift reported in the literature. We used the GTC to obtain their redshifts as described in Section 2.4 and we report the values we obtained in Table 2. We excluded source 8 from our multiobject spectroscopic observations because it is too faint ( $rK \text{ mag} = 21.81$ ) to obtain a reliable spectroscopic redshift with our observations. Moreover, its photometric redshift was greater than the maximum value estimated for the FRB host galaxy by four standard deviations. With redshift  $z = 0.06835$  (1), source 2 (PanSTARRS-DR1 J042256.01+733940.7) is the only galaxy in the field satisfying the condition  $z < 0.091$ . The second closest galaxy in the  $2\sigma$  localization region has a redshift more than double the maximum limit we derived (see Table 2). Therefore, we identify PanSTARRS-DR1 J042256.01+733940.7 as the most probable host for FRB 20180814A. The spectrum of this galaxy is reported in Figure 3.

#### 3.1.2. Properties of PanSTARRS-DR1 J042256.01+733940.7

Based on its rest-frame ( $g - r$ ) color of 0.74 AB mag and absolute  $r$ -band magnitude of  $-20.75$  AB mag, PanSTARRS-

<sup>19</sup> <http://www.gtc.iac.es/instruments/osiris>

**Table 1**  
Sky Positions of 13 Repeating FRB Sources Discovered by CHIME/FRB Localized with Their Baseband Data

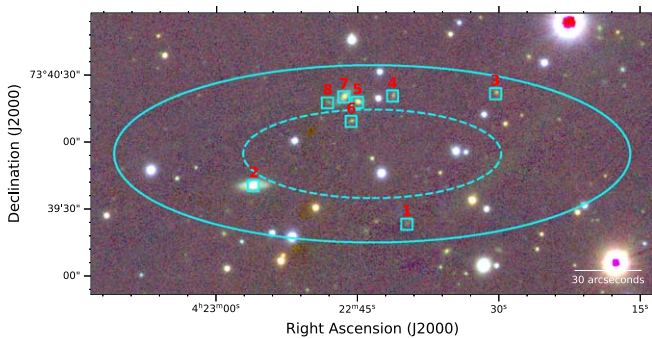
Source	Previous Name	R.A.	$\sigma_{\text{R.A.}}$ (")	Decl.	$\sigma_{\text{Decl.}}$ (")	DM (pc cm <sup>-3</sup> )	$z_{\text{max}}$	#
20180814A	180814.J0422+73 <sup>a</sup>	4 <sup>h</sup> 22 <sup>m</sup> 44 <sup>s</sup>	18	73°39'52"	20	189.4(4) <sup>a</sup>	0.091	4
20181128A	181128.J0456+63 <sup>b</sup>	4 <sup>h</sup> 55 <sup>m</sup> 41 <sup>s</sup>	47	63°15'27"	47	450.5(3) <sup>b</sup>	0.44	1
20181119A	181119.J12+65 <sup>b</sup>	12 <sup>h</sup> 41 <sup>m</sup> 52 <sup>s</sup>	25	65°7'2"	29	364.05(9) <sup>b</sup>	0.43	2
20190116A	190116.J1249+27 <sup>b</sup>	12 <sup>h</sup> 49 <sup>m</sup> 8 <sup>s</sup>	33	27°8'2"	33	441(2) <sup>b</sup>	0.56	1
20190222A	190222.J2052+69 <sup>b</sup>	20 <sup>h</sup> 52 <sup>m</sup> 12 <sup>s</sup>	15	69°44'42"	17	460.6(2) <sup>b</sup>	0.49	1
20190208A	190208.J1855+46 <sup>c</sup>	18 <sup>h</sup> 54 <sup>m</sup> 7 <sup>s</sup>	12	46°55'20"	13	580.05(15) <sup>c</sup>	0.68	3
20190604A	190604.J1435+53 <sup>c</sup>	14 <sup>h</sup> 34 <sup>m</sup> 47 <sup>s</sup>	28	53°18'20"	28	552.65(5) <sup>c</sup>	0.70	1
20190213B	190212.J18+81 <sup>c</sup>	18 <sup>h</sup> 25 <sup>m</sup> 2 <sup>s</sup>	20	81°24'5"	26	302(1) <sup>c</sup>	0.31	3
20180908B	180908.J1232+74 <sup>c</sup>	12 <sup>h</sup> 32 <sup>m</sup> 48 <sup>s</sup>	38	74°10'21"	51	195.6(2) <sup>c</sup>	0.17	1
20190117A	190117.J2207+17 <sup>c</sup>	22 <sup>h</sup> 6 <sup>m</sup> 38 <sup>s</sup>	13	17°22'6"	13	393.6(8) <sup>c</sup>	0.46	2
20190303A	190303.J1353+48 <sup>c</sup>	13 <sup>h</sup> 51 <sup>m</sup> 59 <sup>s</sup>	11	48°7'16"	12	222.4(7) <sup>c</sup>	0.22	17
20190417A	190417.J1939+59 <sup>c</sup>	19 <sup>h</sup> 39 <sup>m</sup> 4 <sup>s</sup>	15	59°19'55"	16	1378.2(2) <sup>c</sup>	1.2	3
20190907A	190907.J08+46 <sup>c</sup>	8 <sup>h</sup> 9 <sup>m</sup> 47 <sup>s</sup>	40	46°22'46"	36	309.6(2) <sup>c</sup>	0.33	1

**Note.** The source name and other published designations are presented, together with the values of R.A. and Decl. (J2000), their  $1\sigma$  uncertainties, DM, maximum redshift estimated for the host galaxy, and number of bursts with baseband data used in the analysis. Both the R.A. and Decl. uncertainties are in the same units of seconds of arc on the sky, i.e., the uncertainty regions are approximately circular on the sky.

<sup>a</sup> Presented by CHIME/FRB Collaboration et al. (2019a).

<sup>b</sup> Presented by CHIME/FRB Collaboration et al. (2019b).

<sup>c</sup> Presented by Fonseca et al. (2020).



**Figure 2.** PanSTARRS RGB image of the FRB 20180814A  $1\sigma$  (dashed cyan ellipse) and  $2\sigma$  (solid cyan ellipse) localization regions. Cyan boxes show the locations of the eight host galaxy candidates within the localization region (see Table 2) identified in the PanSTARRS data. We identify source 2 (PanSTARRS-DR1 J042256.01 + 733940.7) as the most probable host for the FRB. Pink regions visible in the image have been used to block bright stars.

DR1 J042256.01 + 733940.7 can be classified as a red sequence (early-type) galaxy using the color–magnitude relation identified by Bell et al. (2003). The Wide-field Infrared Survey Explorer (WISE) color–color classification (Wright et al. 2010) considers it to be a spiral galaxy with no actively accreting massive black hole in its center, given  $W1$  ( $3.4 \mu\text{m}$ ) –  $W2$  ( $4.6 \mu\text{m}$ ) =  $0.13 \pm 0.04$  and  $W2$  ( $4.6 \mu\text{m}$ ) –  $W3$  ( $12 \mu\text{m}$ ) =  $2.45 \pm 0.12$ . The galaxy spectrum reported in Figure 3 shows multiple Balmer and metal absorption lines, including calcium H and K lines, the  $G$  band feature at  $4304 \text{ \AA}$ , Mg I, and Na I, while the spectrum lacks prominent emission lines, except for weak [N II] lines, indicating an evolved stellar population lacking young stars and gas. This is corroborated by the value of the index  $D4000 \approx 1.7$ , obtained as the ratio of the flux in the red continuum ( $4000\text{--}4100 \text{ \AA}$ ) to that in the blue continuum ( $3850\text{--}3950 \text{ \AA}$ ) in the rest frame, greater than the passive and star-forming galaxy separation cutoff of 1.45 (Balogh et al. 1999). Therefore, PanSTARRS-DR1 J042256.01 733940.7 is likely an early-type spiral galaxy that is currently in its quenched/passive phase and that has stopped forming new stars for more than 1 Gyr (Masters et al. 2010).

**Table 2**

Galaxies from the PanSTARRS-DR1 Catalog in the 86% Localization Region of FRB 20180814A

#	R.A. (J2000)	Decl. (J2000)	$rK$ mag <sup>a</sup>	$z$
1	4 <sup>h</sup> 22 <sup>m</sup> 39 <sup>s</sup> .77	73°39'23"6	21.28	0.412(1)
2	4 <sup>h</sup> 22 <sup>m</sup> 56 <sup>s</sup> .01	73°39'40"7	17.15	0.06835(1)
3	4 <sup>h</sup> 22 <sup>m</sup> 30 <sup>s</sup> .38	73°40'22"0	20.75	0.408(1)
4	4 <sup>h</sup> 22 <sup>m</sup> 41 <sup>s</sup> .29	73°40'20"9	20.65	0.376(1)
5	4 <sup>h</sup> 22 <sup>m</sup> 45 <sup>s</sup> .02	73°40'18"1	19.26	0.235(1)
6	4 <sup>h</sup> 22 <sup>m</sup> 45 <sup>s</sup> .68	73°40'09"5	21.01	0.411(1)
7	4 <sup>h</sup> 22 <sup>m</sup> 46 <sup>s</sup> .46	73°40'20"5	18.75	0.237(1)
8	4 <sup>h</sup> 22 <sup>m</sup> 48 <sup>s</sup> .19	73°40'17"8	21.81	0.5(1) <sup>b</sup>

**Notes.** Redshifts have been measured using the GTC telescope. Galaxy PanSTARRS-DR1 J042256.01+733940.7, a.k.a. source 2, is the most probable host in the field given its low redshift.

<sup>a</sup> Kron  $r$ -band magnitude.

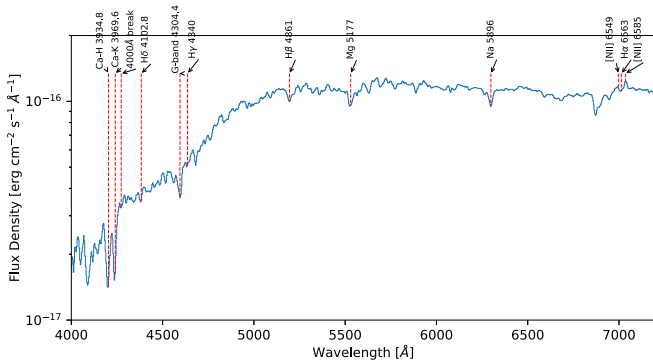
<sup>b</sup> Photometric redshift from the PanSTARRS catalog.

To obtain the physical properties of PanSTARRS-DR1 J042256.01 + 733940.7, we used a Bayesian inference spectral energy distribution (SED) fitting code, *Prospector* (Leja et al. 2017; Johnson et al. 2019). We fit a delayed- $\tau$  model (Simha et al. 2014; Carnall et al. 2019) whose details are provided in Appendix C, to 11 broadband optical, near-, and mid-IR filter fluxes. The results of this fit are presented in Table 3. As visible, the star formation rate (SFR) is very low, again confirming our classification as a passive galaxy.

### 3.2. FRB 20190303A

The bursts emitted by this FRB source have a relatively small  $\text{DM} = 222.4(7) \text{ pc cm}^{-3}$ . Through our Bayesian framework (see Section 2.3), we obtained a one-sided 95% Bayesian upper limit on the redshift  $z < 0.22$ .

We queried the Sloan Digital Sky Survey (SDSS; Gunn et al. 2006) DR12 catalog (Alam et al. 2015) to identify plausible host candidates in the 86% localization region of the FRB and found three galaxies. These sources are listed in



**Figure 3.** Optical spectrum of PanSTARRS-DR1 J042256.01+733940.7, identified as the likely host of FRB 20180814A, measured with GTC/OSIRIS.

Table 4. Two of these galaxies are a pair of merging galaxies, SDSS J135159.17 + 480729.0 and J135159.87 + 480714.2 (a.k.a. MCG + 08-25-049 and MCG + 08-25-050; Vorontsov-Vel’Yaminov & Arkhipova 1962), located at a redshift of  $z = 0.064$  (Ahn et al. 2012), that were already noted by Fonseca et al. (2020) in the field. An SDSS image of the field is shown in Figure 4 together with the FRB localization region.

We performed a targeted long-slit spectroscopy observation of source 3 with the GTC/OSIRIS (Director’s Discretionary time program GTC04-22ADDT). However, the galaxy was too faint to obtain a reliable spectrum. Source 3 has a photometric redshift measured to be 0.20(4), i.e., just compatible with the 95% maximum limit we estimated for the host galaxy of the FRB. We calculated the probability of chance association between the FRB and either of the merging galaxies by using a Bayesian framework called PATH (Aggarwal et al. 2021). We assumed a 10% prior probability that the host galaxy of the FRB is not detected either in the SDSS or in the DESI survey, a conservative value recommended by Aggarwal et al. (2021). Moreover, we assigned an identical prior to every galaxy in consideration, the most agnostic approach suggested by Aggarwal et al. (2021). We obtain a posterior probability of true association with either of the merging galaxies  $>0.99$ . Therefore, we consider one of the two merging galaxies in the field to be the likely host of FRB 20190303A.

### 3.2.1. Properties of SDSS J135159.17 + 480729.0 and J135159.87 + 480714.2

The physical properties of the two merging galaxies have been estimated by the SDSS collaboration (Alam et al. 2015); we report the values they obtain in Table 3. We used the Baldwin, Philips, & Terlevich (BPT) diagrams of [O III]/H $\beta$  versus [N II]/H $\alpha$  and [O III]/H $\beta$  versus [S II]/H $\alpha$  to classify the dominant source of ionizing radiation in the two galaxies and found that both are classified as star-forming galaxies, as visible in Figure 5.

### 3.3. Other FRB Sources

FRB 20190116A intercepts the line of sight of the Coma cluster. This generated some speculations that the host galaxy might have been part of the cluster (Hallinan et al. 2019a). While we are unable to identify unambiguously a host for the FRB, the updated localization allows us to exclude any galaxy in the Coma cluster as a potential host for the FRB after searching multiple optical catalogs (Godwin et al. 1983; Adami et al. 2006; Yagi et al. 2016; Mahajan et al. 2018).

FRB 20180908B has a relatively low DM excess, which implies a maximum redshift of  $z < 0.17$  for its host galaxy in our analysis. Within the 86% confidence region of the FRB position, we find 12 galaxies classified in the PanSTARRS-DR1 catalog. From their photometric redshifts listed in Table 5, only a few galaxies are below the maximum limit. We thus argue that one of them is the host of FRB 20180908B. However, spectroscopic redshifts are not measured for this galaxy sample and, therefore, the current values could be imprecise.

With  $DM = 1378.2(2)$  pc cm $^{-3}$ , FRB 20190417A has the highest DM of our FRB sample. Also, its Faraday rotation has been measured to be relatively high,  $RM \approx 4500$  rad m $^{-2}$  (Feng et al. 2022; Mckinven et al. 2023). The high RM could suggest that the source lives in a dense environment, which may be contributing to a large fraction of its total DM (Michilli et al. 2018; Anna-Thomas et al. 2023; Dai et al. 2022), making the source actually closer than the distance inferred from its DM. However, no extended source is detected in the archival PanSTARRS-DR1 data, excluding a host galaxy located in the local universe. Two FRBs with high RM values have been detected in close proximity of persistent radio sources (Chatterjee et al. 2017; Niu et al. 2022). We are currently searching for persistent radio candidates in the field of FRB 20190417A as well as in the field of other FRBs in the sample; the results will be presented in an upcoming paper (A. Ibik et al. 2023, in preparation).

## 4. Discussion

The sample of FRB host galaxy candidates exhibits remarkable diversity. This work shows that even among repeaters, FRBs can reside in environments with very different characteristics. Together with the other five localized repeaters (Heintz et al. 2020), it is evident that the known repeating FRB hosts exhibit a continuum of properties in terms of their luminosities, stellar masses, metallicities, and SFRs. Bhandari et al. (2022) found tentative evidence for the hosts of repeating FRBs being less massive and less luminous on average, compared to the hosts of apparently nonrepeating FRBs. The association of the repeating FRBs 20190303A and 20180814A with relatively luminous and massive spiral galaxies seems to contradict this hypothesis. It is crucial to get more host associations to do meaningful statistical studies of the FRB host population.

### 4.1. FRB 20180814A

The FRB 20180814A host is a spiral galaxy with very low star formation; this is the the first FRB to date associated to a galaxy of this kind. However, other FRBs have been found to live in environments with old stellar populations. Most notably, FRB 20200120E was found to be located in a globular cluster of the M81 galaxy (Bhardwaj et al. 2021a; Kirsten et al. 2022), while FRB 20210117A was recently localized to a dwarf galaxy with little star formation (Bhandari et al. 2023). These environments suggest a ‘delayed’-formation channel for some FRB progenitors, such as binary neutron star mergers and accretion-induced white dwarf collapses (Giacomazzo & Perna 2013; Ruiter et al. 2019). The bursts detected from FRB 20200120E have energies more than three orders of magnitude smaller than those from FRB 20180814A, indicating that ‘delayed’-formation channels might produce FRB sources with wide ranges of energies.

We reran our Bayesian formalism (Section 2.3) after fixing the redshift of PanSTARRS-DR1 J042256.01 + 733940.7 and

**Table 3**  
Physical Properties of Galaxies Possibly Hosting FRBs Identified in This Work

Property	PanSTARRS-DR1	SDSS <sup>a</sup>	SDSS <sup>a</sup>
	J042256.01 + 733940.7	J135159.17 + 480729.0	J135159.87 + 480714.2
$\log[\text{SFR}] (M_{\odot} \text{ yr}^{-1})$	$< -0.5$	0.99(3)	0.84(4)
Stellar metallicity ( $\log(Z/Z_{\odot})$ )	$-0.61^{+0.43}_{-0.53}$	-0.39(1)	-0.31(7)
Stellar mass ( $\log(M/M_{\odot})$ )	$10.78^{+0.12}_{-0.18}$	10.63(3)	10.75(3)
Effective radius ( $R_{\text{eff}}$ ; kpc)	3.2	4.9	4.7
Mass-weighted age (Gyr)	$7.6^{3.3}_{-3.4}$	1.72(18)	4.2(8)
$(u - r)_o$ (mag)	$2.57^{+0.17}_{-0.20}$	1.79(1)	1.93(2)
$A_{V,\text{young}}$ (mag)	$0.43^{+0.33}_{-0.20}$	2.27(13)	2.44(3)
$A_{V,\text{old}}$ (mag)	$0.45^{+0.32}_{-0.18}$	0.76(4)	0.81(1)
Absolute $r$ -band mag (AB)	-20.78	-20.49	-19.94
Redshift ( $z$ )	0.06835(1)	0.06386(1)	0.06437(1)

**Note.**

<sup>a</sup> Properties estimated by the SDSS collaboration (Alam et al. 2015).

**Table 4**

Galaxies from the DR12 Catalog in the 86% Localization Region of FRB 20190303A

#	R.A. (J2000)	Decl. (J2000)	$r$ mag <sup>a</sup>	$z$
1	13 <sup>h</sup> 51 <sup>m</sup> 59 <sup>s</sup> 87	48 <sup>o</sup> 7'14"2	15.50(2)	0.06386
2	13 <sup>h</sup> 51 <sup>m</sup> 59 <sup>s</sup> 17	48 <sup>o</sup> 7'29"0	15.99(4)	0.06437
3	13 <sup>h</sup> 51 <sup>m</sup> 57 <sup>s</sup> 34	48 <sup>o</sup> 7'25"9	20.12(6)	0.20(4) <sup>b</sup>

**Notes.**

<sup>a</sup> Petrosian  $r$ -band magnitude.

<sup>b</sup> Photometric redshift.

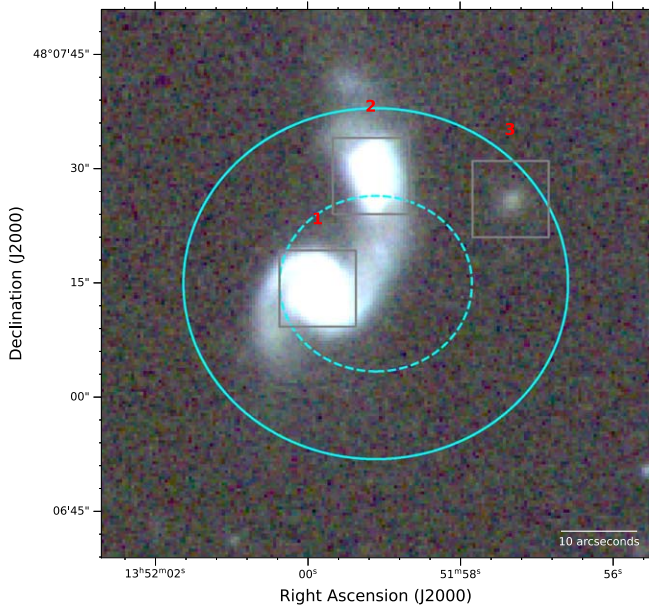
obtained a contribution from the Milky Way disk of  $\text{DM}_{\text{MW}} = 82(8) \text{ pc cm}^{-3}$ , from its halo of  $\text{DM}_{\text{halo}} = 40^{+11}_{-12} \text{ pc cm}^{-3}$ , from the IGM of  $\text{DM}_{\text{IGM}} = 45^{+13}_{-8} \text{ pc cm}^{-3}$ , and from the host galaxy of  $\text{DM}_{\text{host}} = 19^{+17}_{-11} \text{ pc cm}^{-3}$ . However, the line of sight to this galaxy intercepts a few galaxy groups that will also contribute to the number density of free electrons in the IGM (Li et al. 2019). This implies that the expected contribution of the host galaxy will be even smaller than the estimated value, as expected for early-type galaxies, where less ionized gas is present (e.g., Chawla et al. 2022). Thus, FRB 20180814A can be a good candidate to study the circumgalactic medium (CGM) in the foreground galaxy groups along the line of sight (Prochaska et al. 2019) in future studies. Additionally, one of FRB 20180814A's bursts is found to have a relatively high  $\text{RM} \approx 700 \text{ rad m}^{-2}$ , where the Milky Way's expected contribution is  $\text{RM} \approx -45 \text{ rad m}^{-2}$  (Mckinven et al. 2023). The extragalactic RM is likely dominated by the FRB's local environment. Using the estimated host DM contribution and the observed extragalactic RM, we estimate the average line-of-sight component of the magnetic field to be  $\langle B_{\parallel} \rangle \gtrsim 46 \mu\text{G}$ . This value is larger than the magnetic field estimated in the ISM around the Sun (1–5  $\mu\text{G}$ ; Wielebinski & Beck 2005) and in the Galactic central region (20–40  $\mu\text{G}$ ; Wielebinski & Beck 2005). Since it is likely dominated by the circumburst medium, its value is probably even higher, as previously observed in other FRBs (e.g., Michilli et al. 2018). Piro & Gaensler (2018) showed that if the circumburst RM is provided by magnetized stellar winds, we would expect a DM contribution much larger than the observed value ( $\text{DM} \gtrsim 500 \text{ pc cm}^{-3}$ ). On the other hand, if the FRB source is young and the RM is provided by a supernova remnant or postmerger ejecta that is expanding in a constant-density host ISM, then the ambient electron number density must be small ( $\lesssim 0.1 \text{ pc cm}^{-3}$ ),

compatible with progenitors formed via ‘delayed’-formation channel models, such as binary neutron star mergers and the accretion-induced collapse of white dwarfs (Piro & Kulkarni 2013; Moriya 2016; Liu 2020).

#### 4.2. FRB 20190303A

FRB 20190303A is localized to a pair of merging galaxies. Other FRBs in the literature have been tentatively associated with merger events. Law et al. (2020) reported a possible association at 7% probability (Heintz et al. 2020) of FRB 20190614D with a galaxy pair. Heintz et al. (2020) noted that the FRB 20191001 host is also likely in the process of merging with another galaxy. Kaur et al. (2022) claimed that the host of FRB 20180916B recently underwent a small merger, resulting in a burst of star formation at the galaxy's outskirts. Finally, Ryder et al. (2022) reported the discovery of FRB 20220610A in a complex (likely merging) galaxy system. These associations of FRBs with merging systems suggest that merger events could facilitate conditions conducive to the formation of FRB progenitors. Galaxy mergers often cause enhanced star formation in and at the outskirts of the galaxies, making them a promising site of transients associated with young progenitors formed via prompt channels, like core-collapse supernovae, long gamma-ray bursts and hydrogen-poor superluminous supernovae.

A new execution of our Bayesian framework fixing the redshift of the merging pair resulted in a contribution from the Milky Way disk of  $\text{DM}_{\text{MW}} = 26(3) \text{ pc cm}^{-3}$ , from its halo of  $\text{DM}_{\text{halo}} = 42(13) \text{ pc cm}^{-3}$ , from the IGM of  $\text{DM}_{\text{IGM}} = 49^{+34}_{-13} \text{ pc cm}^{-3}$ , and from the host galaxy of  $\text{DM}_{\text{host}} = 109^{+22}_{-36} \text{ pc cm}^{-3}$ . The relatively large contribution of the host to the DM is likely due to the ongoing merging process of the two galaxies, which can have a significant impact on the CGMs (Hani et al. 2018). With future observations, the bursts from FRB 20190303A may help us to understand better how the CGM is affected by galaxy mergers. Mckinven et al. (2023) reported that the bursts from FRB 20190303A show a relatively large and rapidly varying RM measured to be between  $\text{RM} = -703.40(58)$  and  $-205.41(42) \text{ rad cm}^{-2}$  (Mckinven et al. 2023), with a maximum variation measured to be  $|\nabla\text{RM}| \gtrsim -17 \text{ rad cm}^{-2} \text{ day}^{-1}$ . The rapid variability suggests a relatively small size of the Faraday screen and, therefore, it argues for a dominant RM contribution from the environment local to the source as opposed to a larger-scale medium in the merging galaxies.



**Figure 4.** SDSS RGB image of the FRB 20190303A  $1\sigma$  (dashed cyan ellipse) and  $2\sigma$  (solid cyan ellipse) localization regions. Cyan boxes show the locations of three host galaxy candidates within the localization region (see Table 4) identified in the SDSS data.

#### 4.3. Additional Follow Up

Due to the limited localization precision and the higher DM values, it was not possible to identify a host galaxy unambiguously for the rest of the sources presented in Table 1. We report their best positions with the intent for other instruments to study additional bursts eventually emitted by these repeating FRBs. The detection of repeating FRBs in nearby galaxies is particularly interesting for follow-up studies at other wavelengths. The localization precision reported here is sufficient to observe these sources with most optical and X-ray instruments. The activity of repeating FRBs is monitored daily by CHIME/FRB; detections are reported and made public within a few hours on a dedicated web page<sup>20</sup> and VOEvents are shared within seconds of a detection with any subscriber.<sup>21</sup> We encourage rapid multiwavelength follow up of the sources presented here, and particularly of active repeaters in nearby galaxies.

## 5. Conclusions

We have presented the best positions of 13 repeating FRB sources currently available with CHIME/FRB. We have used channelized voltage data stored at the time of candidate events to map the signal strength on the sky around the source and fit this with a 2D Gaussian approximating the beam response of the telescope (Michilli et al. 2021). The resulting localization regions have uncertainties of the order of  $10''$ , not precise enough to identify a host galaxy unambiguously for the majority of FRBs. However, we use the small excess DM of two FRB sources, 20180814A and 20190303A, to place a limit on the maximum redshift that they can have by using conservative estimates on the Milky Way and extragalactic contributions (Bhardwaj et al. 2021b). In this way, we are able to identify their likely host galaxies in the localization regions.

<sup>20</sup> <https://www.chime-frb.ca/repeaters>

<sup>21</sup> <https://www.chime-frb.ca/voevents>

**Table 5**

Galaxies from the PanSTARRS-DR1 Catalog in the 86% Localization Region of FRB 20180908B

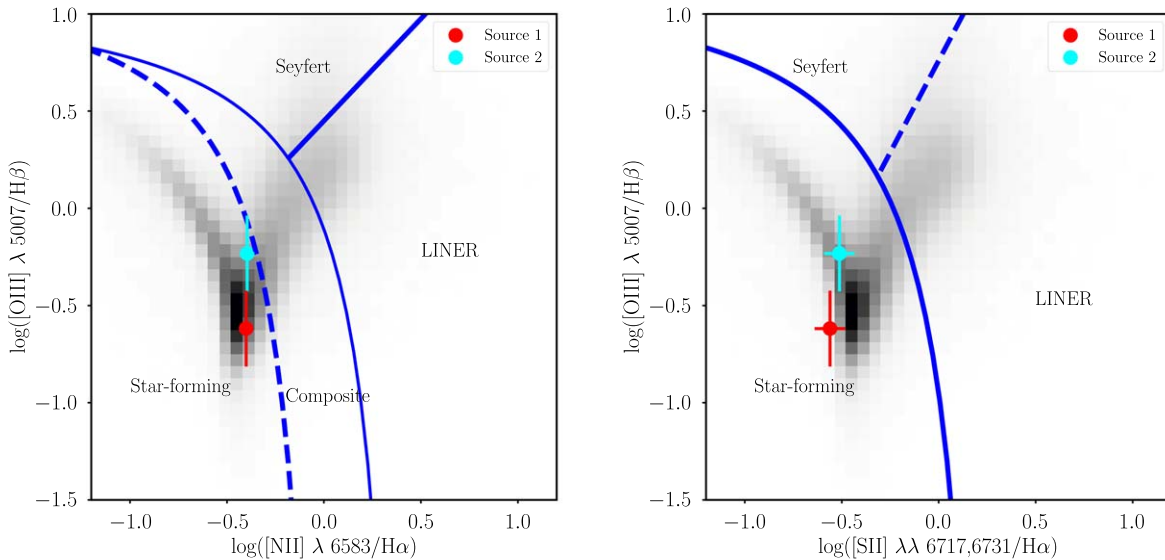
#	R.A. (J2000)	Decl. (J2000)	$z_{\text{photo}}$
1	12 <sup>h</sup> 33 <sup>m</sup> 32 <sup>s</sup> .76	74°09'45"81	0.06(2)
2	12 <sup>h</sup> 33 <sup>m</sup> 34 <sup>s</sup> .69	74°09'43"22	0.13(1)
3	12 <sup>h</sup> 33 <sup>m</sup> 43 <sup>s</sup> .43	74°10'05"85	0.15(1)
4	12 <sup>h</sup> 32 <sup>m</sup> 09 <sup>s</sup> .26	74°11'35"70	0.19(7)
5	12 <sup>h</sup> 33 <sup>m</sup> 34 <sup>s</sup> .61	74°11'29"55	0.2(5)
6	12 <sup>h</sup> 33 <sup>m</sup> 16 <sup>s</sup> .95	74°09'13"27	0.20(3)
7	12 <sup>h</sup> 33 <sup>m</sup> 09 <sup>s</sup> .21	74°09'11"16	0.4(3)
8	12 <sup>h</sup> 32 <sup>m</sup> 32 <sup>s</sup> .31	74°10'34"71	0.39(10)
9	12 <sup>h</sup> 33 <sup>m</sup> 45 <sup>s</sup> .03	74°10'11"09	0.4(3)
10	12 <sup>h</sup> 32 <sup>m</sup> 40 <sup>s</sup> .61	74°10'12"54	0.4(1)
11	12 <sup>h</sup> 32 <sup>m</sup> 03 <sup>s</sup> .61	74°10'38"23	0.50(5)
12	12 <sup>h</sup> 32 <sup>m</sup> 54 <sup>s</sup> .57	74°09'16"91	0.59(9)

**Note.** The photometric redshifts are from the catalog.

FRB 20180814A lives in a quiescent galaxy, while FRB 20190303A is in a merging pair of spiral galaxies undergoing significant star formation. It has been argued that repeating FRBs may represent a different subclass of FRBs compared to apparently one-off sources due to their characteristics (e.g., Fonseca et al. 2020). These two diametrically opposed hosts demonstrate that even among repeating FRB sources, there is an incredible variety of different environments that they can inhabit. These galaxy hosts further reveal the plethora of environments that can harbor FRBs (Heintz et al. 2020). It is clear that the precise localization of a large number of FRBs is needed to shed a light on the type and number of FRB progenitors. To this end, CHIME/FRB Outriggers is currently under development to increase the localization capability of CHIME/FRB to  $\sim 50$  mas (Leung et al. 2021; Cassanelli et al. 2022; Mena-Parra et al. 2022). In the meantime, we encourage follow ups of repeating FRB sources with other interferometers to increase the localization precision. We provide a public web page with updated detection from repeater sources and rapid VOEvents for subscribers. This is also important for multiwavelength follow ups since they often require a precise position and are particularly constraining when observing nearby repeating FRBs, as it is the case for FRBs 20180814A and 20190303A.

## Acknowledgments

We acknowledge that CHIME is located on the traditional, ancestral, and unceded territory of the Syilx/Okanagan people. We are grateful to the staff of the Dominion Radio Astrophysical Observatory, which is operated by the National Research Council of Canada. CHIME is funded by a grant from the Canada Foundation for Innovation (CFI) 2012 Leading Edge Fund (Project 31170) and by contributions from the provinces of British Columbia, Québec, and Ontario. The CHIME/FRB Project is funded by a grant from the CFI 2015 Innovation Fund (Project 33213) and by contributions from the provinces of British Columbia and Québec, and by the Dunlap Institute for Astronomy and Astrophysics at the University of Toronto. Additional support was provided by the Canadian Institute for Advanced Research (CIFAR), McGill University, and the McGill Space Institute thanks to the Trottier Family Foundation, and the University of British Columbia. The Dunlap Institute is funded through an endowment established



**Figure 5.** BPT diagrams used to classify the merging pair of emission-line galaxies likely hosting FRB 20190303A. Left: the dashed line shows the Kauffmann et al. (2003) classification criterion. The Kewley et al. (2006) classification is shown as the solid line. Right: the Kauffmann et al. (2003) criterion is shown as the solid line which separates star-forming galaxies from active galaxies and the dashed lines represent the Seyfert–LINER demarcation from Schawinski et al. (2007). Both SDSS J135159.87 + 480714.2 (source 1) and SDSS J135159.17 + 480729.0 (source 2) are classified as star-forming galaxies.

by the David Dunlap family and the University of Toronto. FRB research at UBC is funded by an NSERC Discovery Grant and by the Canadian Institute for Advanced Research. The CHIME/FRB baseband system is funded in part by a Canada Foundation for Innovation John R. Evans Leaders Fund award to IHS. This work is also based on observations made with the Gran Telescopio Canarias (GTC), installed at the Spanish Observatorio del Roque de los Muchachos of the Instituto de Astrofísica de Canarias, in the island of La Palma. A.B.P. is a McGill Space Institute (MSI) Fellow and a Fonds de Recherche du Québec—Nature et Technologies (FRQNT) postdoctoral fellow. A.M.C. is supported by an NSERC Doctoral Postgraduate Scholarship. B.M.G. acknowledges the support of the Natural Sciences and Engineering Research Council of Canada (NSERC) through grant RGPIN-2022-03163, and of the Canada Research Chairs program. C.L. was supported by the U.S. Department of Defense (DoD) through the National Defense Science & Engineering Graduate Fellowship (NDSEG) Program. F.A.D. is supported by the U.B.C. Four Year Fellowship. K.S. is supported by the NSF Graduate Research Fellowship Program. K.W.M. holds the Adam J. Burgasser Chair in Astrophysics and is supported by an NSF Grant (2008031). M.B. is a McWilliams Fellow. M.D. is supported by a Canada Research Chair, NSERC Discovery Grant, CIFAR, and by the FRQNT Centre de Recherche en Astrophysique du Québec (CRAQ). P.S. is a Dunlap Fellow. S.P.T. is a CIFAR Azrieli Global Scholar in the Gravity and Extreme Universe Program. V.M.K. holds the Lorne Trottier Chair in Astrophysics & Cosmology, a Distinguished James McGill Professorship, and receives support from an NSERC Discovery grant (RGPIN 228738-13), from an R. Howard Webster Foundation Fellowship from CIFAR, and from the FRQNT CRAQ. Z.P. is a Dunlap Fellow.

*Facilities:* GTC, CHIME.

*Software:* astropy (Astropy Collaboration et al. 2018), bitshuffle (Masui 2017), cython (Behnel et al. 2011), emcee (Foreman-Mackey et al. 2013), GTCMOS (Gómez-González et al. 2016), hdf5 (The HDF Group 2023), IRAF

(Tody 1986, 1993), matplotlib (Hunter 2007), numpy (Harris et al. 2020), PATH (Aggarwal et al. 2021), prospector (Leja et al. 2017; Johnson et al. 2019), and scipy (Virtanen et al. 2020).

## Appendix A

### GTC/OSIRIS Observations of Host Galaxy Candidates

In order to measure the spectroscopic redshift of the seven host galaxy candidates in the FRB 20180814A  $2\sigma$  localization region (see Figure 2), we performed an observation with the GTC/OSIRIS. A summary of the observation is given in Table 6. To obtain the spectra of these targets simultaneously, we utilized the multi-object spectroscopy (MOS) mode. The mask was designed with the OSIRIS Mask Designer Tool (González-Serrano et al. 2004; Gómez-Velarde et al. 2016), using a set of five fiducial stars and catalog coordinates of the host galaxy candidates. The observations were performed with the R500B grism covering the spectral range 3600–7200 Å. For the target galaxies we used rectangular slitlets with length between  $1''.5$  and  $20''$  and a width of  $1''.5$ . The spectral resolution for this observation was  $\sim 21$  Å.

The obtained spectra were reduced using the GTCMOS pipeline (Gómez-González et al. 2016) and standard IRAF routines (Tody 1986, 1993). All spectra were bias subtracted and flat-fielded. For flux calibration we used the spectrophotometric standard G191-B2B (Oke 1974; Massey et al. 1988; Oke 1990) observed during the same night as the targets. A set of arc lamp spectra of Ne, Hg, and Ar was used for wavelength calibration. The rms errors of the resulting solutions were  $< 2$  Å.

The resulting product of the reduction contained 2D calibrated spectra collected in all of the slitlets. We extracted each spectrum, identified lines for every galaxy, and estimated their redshifts. We then verified our results by comparing the extracted spectra with the galaxy templates from the Manual and Automatic Redshifting Software (MARZ; Hinton et al. 2016). The corresponding redshifts are presented in Table 2.

**Table 6**  
Log of the GTC/OSIRIS Spectroscopic Observation

Program	Date	Mode	Grism	Position	Exposure	Seeing	Airmass	Night
GTCMULTIPLE3B-20BMEX	12/02/2021	MOS	R500B	0°	3 × 1200 s	0''/7	1.47–1.52	Dark

### Appendix B Localization of Single Bursts

The sky positions of repeating FRBs presented in Table 1 have been obtained as the weighted averages of single bursts

detected for each source. In Table 7, we report the localizations of single bursts corrected for the systematic effects described by Equation (1). One burst from FRB 20180814A, 20190611A, detected on MJD 58645.78660, was not included due to processing issues.

**Table 7**  
Localizations of Single Bursts (J2000) from Repeating FRB Sources Reported in Table 1 with the Same Units

FRB	MJD	R.A. (J2000)	$\sigma_{\text{R.A.}}$ ( $''$ )	Decl. (J2000)	$\sigma_{\text{Decl.}}$ ( $''$ )
FRB 20180814A					
20190625E	58659.738741	4 <sup>h</sup> 22 <sup>m</sup> 40 <sup>s</sup>	54	73°41'10''	49
20190626A	58660.776313	4 <sup>h</sup> 22 <sup>m</sup> 40 <sup>s</sup>	47	73°40'11''	49
20191029A	58785.404155	4 <sup>h</sup> 22 <sup>m</sup> 48 <sup>s</sup>	20	73°39'21''	25
20191111A	58798.371711	4 <sup>h</sup> 22 <sup>m</sup> 35 <sup>s</sup>	32	73°40'27''	40
FRB 20181128A					
20201215C	59198.302165	4 <sup>h</sup> 55 <sup>m</sup> 41 <sup>s</sup>	47	63°15'27''	47
FRB 20181119A					
20200621C	59021.110446	12 <sup>h</sup> 41 <sup>m</sup> 52 <sup>s</sup>	27	65°7'9''	31
20201204D	59187.659263	12 <sup>h</sup> 41 <sup>m</sup> 53 <sup>s</sup>	55	65°6'22''	68
FRB 20190116A					
20190116A	58499.546925	12 <sup>h</sup> 49 <sup>m</sup> 8 <sup>s</sup>	33	27°8'2''	33
FRB 20190222A					
20190301A	58543.752114	20 <sup>h</sup> 52 <sup>m</sup> 12 <sup>s</sup>	15	69°44'42''	17
FRB 20190208A					
20200124A	58872.779844	18 <sup>h</sup> 54 <sup>m</sup> 8 <sup>s</sup>	25	46°55'58''	28
20200513B	58982.475387	18 <sup>h</sup> 54 <sup>m</sup> 10 <sup>s</sup>	29	46°55'3''	31
20210203B	59248.748741	18 <sup>h</sup> 54 <sup>m</sup> 7 <sup>s</sup>	13	46°55'19''	13
FRB 20190604A					
20190606A	58640.232311	14 <sup>h</sup> 34 <sup>m</sup> 47 <sup>s</sup>	28	53°18'20''	28
FRB 20190213B					
20191217A	58834.360372	18 <sup>h</sup> 25 <sup>m</sup> 14 <sup>s</sup>	26	81°23'9''	45
20200725B	59055.235372	18 <sup>h</sup> 24 <sup>m</sup> 57 <sup>s</sup>	31	81°24'41''	46
20210216B	59261.715524	18 <sup>h</sup> 24 <sup>m</sup> 46 <sup>s</sup>	35	81°24'20''	39
FRB 20180908B					
20190621A	58655.098197	12 <sup>h</sup> 32 <sup>m</sup> 48 <sup>s</sup>	38	74°10'21''	51
FRB 20190117A					
20190117A	58500.929541	22 <sup>h</sup> 6 <sup>m</sup> 38 <sup>s</sup>	13	17°22'5''	14
20191223A	58840.004946	22 <sup>h</sup> 6 <sup>m</sup> 38 <sup>s</sup>	28	17°22'19''	36
FRB 20190303A					
20190702B	58666.135223	13 <sup>h</sup> 52 <sup>m</sup> 0 <sup>s</sup>	13	48°7'26''	13
20191013A	58769.855170	13 <sup>h</sup> 52 <sup>m</sup> 0 <sup>s</sup>	46	48°6'39''	48
20191020A	58776.825593	13 <sup>h</sup> 52 <sup>m</sup> 6 <sup>s</sup>	25	48°7'10''	26
20191110A	58797.772937	13 <sup>h</sup> 51 <sup>m</sup> 59 <sup>s</sup>	16	48°7'32''	17
20191113A	58800.758656	13 <sup>h</sup> 51 <sup>m</sup> 58 <sup>s</sup>	19	48°7'2''	20
20191116A	58803.756845	13 <sup>h</sup> 51 <sup>m</sup> 58 <sup>s</sup>	12	48°7'20''	12
20191117A	58804.762867	13 <sup>h</sup> 52 <sup>m</sup> 4 <sup>s</sup>	49	48°7'45''	61
20191215A	58832.676200	13 <sup>h</sup> 52 <sup>m</sup> 2 <sup>s</sup>	22	48°6'56''	25
20191231A	58848.637383	13 <sup>h</sup> 51 <sup>m</sup> 57 <sup>s</sup>	27	48°7'22''	31
20200112A	58860.601787	13 <sup>h</sup> 51 <sup>m</sup> 60 <sup>s</sup>	38	48°6'10''	41
20200622A	59022.161027	13 <sup>h</sup> 51 <sup>m</sup> 59 <sup>s</sup>	31	48°7'43''	33
20200809G	59070.028066	13 <sup>h</sup> 52 <sup>m</sup> 3 <sup>s</sup>	14	48°7'10''	14
20200909A	59101.937544	13 <sup>h</sup> 51 <sup>m</sup> 57 <sup>s</sup>	34	48°6'37''	30

**Table 7**  
(Continued)

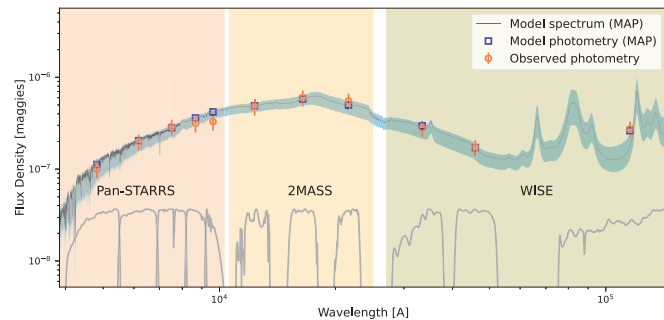
FRB	MJD	R.A. (J2000)	$\sigma_{\text{R.A.}}$ ( $''$ )	Decl. (J2000)	$\sigma_{\text{Decl.}}$ ( $''$ )
20210203C	59248.535427	13 <sup>h</sup> 51 <sup>m</sup> 56 <sup>s</sup>	21	48°7'6"	22
20210207A	59252.526658	13 <sup>h</sup> 51 <sup>m</sup> 56 <sup>s</sup>	23	48°7'48"	23
20210209B	59254.523228	13 <sup>h</sup> 51 <sup>m</sup> 58 <sup>s</sup>	13	48°7'2"	13
20210302C	59275.466332	13 <sup>h</sup> 51 <sup>m</sup> 56 <sup>s</sup>	35	48°7'48"	39
FRB 20190417A					
20190806A	58701.275809	19 <sup>h</sup> 39 <sup>m</sup> 12 <sup>s</sup>	100	59°18'46"	78
20200726D	59056.306742	19 <sup>h</sup> 39 <sup>m</sup> 6 <sup>s</sup>	16	59°19'58"	17
20210304B	59277.696671	19 <sup>h</sup> 38 <sup>m</sup> 57 <sup>s</sup>	24	59°19'51"	29
FRB 20190907A					
20200729A	59059.820902	8 <sup>h</sup> 9 <sup>m</sup> 47 <sup>s</sup>	40	46°22'46"	36

**Note.** Modified Julian dates (MJDs) represent UTC topocentric arrival times at CHIME referenced to 400 MHz using  $k_{\text{DM}}^{-1} = 2.41 \times 10^{-4} \text{ cm}^{-3} \text{ pc MHz}^{-2} \text{ s}^{-1}$  and the source DMs reported in Table 7. The uncertainties on the MJD values are  $\lesssim 0.2 \text{ s}$ .

### Appendix C Prospector Fitting Model

We used a python-based Bayesian inference code, `Prospector` (Leja et al. 2017; Johnson et al. 2019), to estimate the major physical properties of galaxy PanSTARRS-DR1 J042256.01 + 733940.7, identified as the likely host of FRB 20180814A. `Prospector` computes galaxy attributes using stellar population synthesis models provided in the Flexible Stellar Populations Synthesis (FSPS) stellar population code (Conroy et al. 2009). We used the Markov Chain Monte Carlo (MCMC) framework (via `emcee`) of `Prospector` to fit the observed SEDs and to compute the posterior distributions for all free parameters. We used the 11 broadband filters listed in Table 8 to estimate the stellar mass, SFR (95% confidence upper limit), stellar metallicity, and mass-weighted stellar population age of the galaxy, together with dust attenuation due to birth cloud and diffuse dust screens. The best-fit SED profile is shown in Figure 6.

All flux densities are estimated after correcting for Milky Way extinction. We fit a delayed- $\tau$  star formation history model (Simha et al. 2014; Carnall et al. 2019) that has nine free parameters, as described in Table 9. In this model, the star formation history is proportional to  $t \times \exp(-t/\tau)$ , where  $t$  is the time since the formation epoch of the galaxy and  $\tau$  is the



**Figure 6.** SED of PanSTARRS-DR1 J042256.01 + 733940.7, identified as the likely host of FRB 20180814A. The flux densities in the different optical and infrared bands are plotted along with the best-fit `Prospector` model spectrum. The modeled (blue square) and observed (red circle) photometry data are also shown.

**Table 8**

Broadband Filters used to Model the SED of Galaxy PanSTARRS-DR1 J042256.01 + 733940.7, Possible Host of FRB 20180814A

Instrument	Filter	Wavelength ( $\text{\AA}$ )	Flux density <sup>a</sup>
PanSTARRS	<i>g</i>	4810	$9.98 \times 10^{-8}$
	<i>r</i>	6170	$1.98 \times 10^{-7}$
	<i>i</i>	7520	$2.88 \times 10^{-7}$
	<i>z</i>	8660	$3.14 \times 10^{-7}$
2MASS	<i>y</i>	9620	$3.28 \times 10^{-7}$
	<i>J</i>	12319	$4.79 \times 10^{-7}$
	<i>H</i>	16420	$5.98 \times 10^{-7}$
WISE	<i>Ks</i>	21567	$5.52 \times 10^{-7}$
	W1	33461	$2.77 \times 10^{-7}$
	W2	45952	$1.73 \times 10^{-7}$
	W3	115526	$2.74 \times 10^{-7}$

**Note.**

<sup>a</sup> Flux densities are expressed in maggies, where 1 maggie = 1 Jansky/3631. Flux densities at  $\lambda < 100,000 \text{ \AA}$  are corrected for Galactic extinction according to the prescription of Schlafly & Finkbeiner (2011). All flux densities are assigned a 20% fractional uncertainty, which is larger than the cataloged error.

characteristic decay time of our star formation history. Additionally, we enabled the dust emission model of Draine & Li (2007) in the FSPS framework, which has three free parameters that regulate the shape of the IR SED:  $\text{duste}(U_{\text{min}})$ ,  $\text{duste}(Q_{\text{PAH}})$ , and  $\text{duste}(\gamma)$ . Specifically,  $\text{duste}(U_{\text{min}})$  represents the minimum starlight intensity to which the dust mass is exposed,  $\text{duste}(\gamma)$  represents the fraction of dust mass which is exposed to this minimum starlight intensity, and  $\text{duste}(Q_{\text{PAH}})$  quantifies the fraction of total dust mass that is in polycyclic aromatic hydrocarbons (PAHs). To account for dust attenuation, we use the two-component (Charlot & Fall 2000) dust attenuation model, which postulates separate birth cloud (dust1) and diffuse dust (dust2) screens. In order to estimate the “dust1” parameter, we used the inbuilt `prospector` function `models.transforms.dustratio_to_dust1`. All parameters are given standard `Prospector` priors (see Table 9). To estimate the best-fitted mass-weighted stellar population age value, we used the inbuilt `prospector` function `parametric_mwa`. We estimated

**Table 9**  
Free Parameters Fitted with a “Delayed- $\tau$ ” Model with *Prospector*

Parameter	Description	Prior
$\log(M/M_{\odot})$	Total stellar mass formed	log-uniform: min = 8, max = 12
$\log(Z/Z_{\odot})$	Stellar metallicity	top-hat: min = -2, max = 0.2
dust2	Diffuse <i>V</i> -band dust optical depth	top-hat: min = 0, max = 3
dust ratio	Ratio of the additional optical depth in the direction of young stars to the diffuse optical depth of all stars	clipped-normal: mean = 1, $\sigma$ = 0.3, min = 0, max = 2
$t_{\text{age}}$ [Gyr]	Stellar population age of source 2	top-hat: min = 0.001, max = 13.6
$\tau$ [Gyr]	E-folding time of the star formation history	log-uniform: min = 0.1, max = 30
duste( $U_{\text{min}}$ )	From (Draine & Li 2007) dust attenuation model	top-hat: min = 0.1, max = 25
duste( $Q_{\text{PAH}}$ )	From (Draine & Li 2007) dust attenuation model	top-hat: min = 0.5, max = 7
duste( $\gamma$ )	From (Draine & Li 2007) dust attenuation model	log-uniform: min = 0.001, max = 0.15

separately the internal dust extinction due to young stars ( $A_{V,\text{young}}$ ) and old stars ( $A_{V,\text{old}}$ ). Finally, we used the SED templates produced via the MCMC simulation and estimate the rest-frame  $u - r$  color. The major physical properties of the galaxy that we obtained are provided in Table 3.

### ORCID iDs

Daniele Michilli  <https://orcid.org/0000-0002-2551-7554>  
 Mohit Bhardwaj  <https://orcid.org/0000-0002-3615-3514>  
 Charanjot Brar  <https://orcid.org/0000-0002-1800-8233>  
 B. M. Gaensler  <https://orcid.org/0000-0002-3382-9558>  
 Victoria M. Kaspi  <https://orcid.org/0000-0001-9345-0307>  
 Aida Kirichenko  <https://orcid.org/0000-0002-8139-8414>  
 Kiyoshi W. Masui  <https://orcid.org/0000-0002-4279-6946>  
 Ryan Mckinven  <https://orcid.org/0000-0001-7348-6900>  
 Cherry Ng  <https://orcid.org/0000-0002-3616-5160>  
 Chitrang Patel  <https://orcid.org/0000-0003-3367-1073>  
 Ketan R. Sand  <https://orcid.org/0000-0003-3154-3676>  
 Paul Scholz  <https://orcid.org/0000-0002-7374-7119>  
 Kaitlyn Shin  <https://orcid.org/0000-0002-6823-2073>  
 Seth R. Siegel  <https://orcid.org/0000-0003-2631-6217>  
 Ingrid Stairs  <https://orcid.org/0000-0001-9784-8670>  
 Tomas Cassanelli  <https://orcid.org/0000-0003-2047-5276>  
 Amanda M. Cook  <https://orcid.org/0000-0001-6422-8125>  
 Matt Dobbs  <https://orcid.org/0000-0001-7166-6422>  
 Fengqiu Adam Dong  <https://orcid.org/0000-0003-4098-5222>  
 Emmanuel Fonseca  <https://orcid.org/0000-0001-8384-5049>  
 Adaeze Ibik  <https://orcid.org/0000-0003-2405-2967>  
 Jane Kaczmarek  <https://orcid.org/0000-0003-4810-7803>  
 Calvin Leung  <https://orcid.org/0000-0002-4209-7408>  
 Aaron B. Pearlman  <https://orcid.org/0000-0002-8912-0732>  
 Emily Petroff  <https://orcid.org/0000-0002-9822-8008>  
 Ziggy Pleunis  <https://orcid.org/0000-0002-4795-697X>  
 Masoud Rafiei-Ravandi  <https://orcid.org/0000-0001-7694-6650>  
 Pranav Sanghavi  <https://orcid.org/0000-0001-5504-229X>  
 J. Richard Shaw  <https://orcid.org/0000-0002-4543-4588>  
 Shriharsh P. Tendulkar  <https://orcid.org/0000-0003-2548-2926>

### References

Adami, C., Picat, J. P., Savine, C., et al. 2006, *A&A*, 451, 1159  
 Aggarwal, K., Budavári, T., Deller, A. T., et al. 2021, *ApJ*, 911, 95  
 Ahn, C. P., Alexandroff, R., Allende Prieto, C., et al. 2012, *ApJS*, 203, 21  
 Alam, S., Albareti, F. D., Allende Prieto, C., et al. 2015, *ApJS*, 219, 12

Astropy Collaboration, Price-Whelan, A. M., Sipőcz, B. M., et al. 2018, *AJ*, 156, 123  
 Anna-Thomas, R., Connor, L., Dai, S., et al. 2023, *Sci*, 380, 599  
 Balogh, M. L., Morris, S. L., Yee, H. K. C., Carlberg, R. G., & Ellingson, E. 1999, *ApJ*, 527, 54  
 Bannister, K. W., Deller, A. T., Phillips, C., et al. 2019, *Sci*, 365, 565  
 Behnel, S., Bradshaw, R., Citro, C., et al. 2011, *CSE*, 13, 31  
 Bell, E. F., McIntosh, D. H., Katz, N., & Weinberg, M. D. 2003, *ApJS*, 149, 289  
 Bhandari, S., Heintz, K. E., Aggarwal, K., et al. 2022, *AJ*, 163, 69  
 Bhandari, S., Gordon, A. C., Scott, D. R., et al. 2023, *ApJ*, 948, 67  
 Bhandari, S., Sadler, E. M., Prochaska, J. X., et al. 2020, *ApJL*, 895, L37  
 Bhardwaj, M., Gaensler, B. M., Kaspi, V. M., et al. 2021a, *ApJL*, 910, L18  
 Bhardwaj, M., Kirichenko, A. Y., Michilli, D., et al. 2021b, *ApJL*, 919, L24  
 Bochenek, C. D., Ravi, V., Belov, K. V., et al. 2020, *Natur*, 587, 59  
 Carnall, A. C., Leja, J., Johnson, B. D., et al. 2019, *ApJ*, 873, 44  
 Cassanelli, T., Leung, C., Rahman, M., et al. 2022, *AJ*, 163, 65  
 Chambers, K. C., Magnier, E. A., Metcalfe, N., et al. 2016, arXiv:1612.05560  
 Charlot, S., & Fall, S. M. 2000, *ApJ*, 539, 718  
 Chatterjee, S., Law, C., Wharton, R., et al. 2017, *Natur*, 541, 58  
 Chatterjee, S., Law, C. J., Wharton, R. S., et al. 2017, *Natur*, 541, 58  
 Chawla, P., Kaspi, V. M., Ransom, S. M., et al. 2022, *ApJ*, 927, 35  
 CHIME/FRB Collaboration, Amiri, M., Andersen, B. C., et al. 2021, *ApJS*, 257, 59  
 CHIME/FRB Collaboration, Amiri, M., Bandura, K., et al. 2018, *ApJ*, 863, 48  
 CHIME/FRB Collaboration, Amiri, M., Bandura, K., et al. 2019a, *Natur*, 566, 235  
 CHIME/FRB Collaboration, Andersen, B. C., Bandura, K., et al. 2019b, *ApJL*, 885, L24  
 CHIME Collaboration, Amiri, M., Bandura, K., et al. 2022, *ApJS*, 261, 29  
 CHIME/FRB Collaboration, Andersen, B. C., Bandura, K., et al. 2020, *Natur*, 587, 54  
 Conroy, C., Gunn, J. E., & White, M. 2009, *ApJ*, 699, 486  
 Cordes, J. M., & Lazio, T. J. W. 2002, arXiv:astro-ph/0207156  
 Dai, S., Feng, Y., Yang, Y. P., et al. 2022, arXiv:2203.08151  
 Draine, B. T., & Li, A. 2007, *ApJ*, 657, 810  
 Driessen, L. N., Barr, E., Buckley, D., et al. 2023, arXiv:2302.09787  
 Feng, Y., Li, D., Yang, Y.-P., et al. 2022, *Sci*, 375, 1266  
 Fonseca, E., Andersen, B. C., Bhardwaj, M., et al. 2020, *ApJL*, 891, L6  
 Foreman-Mackey, D., Hogg, D. W., Lang, D., & Goodman, J. 2013, *PASP*, 125, 306  
 Giacomazzo, B., & Perna, R. 2013, *ApJL*, 771, L26  
 Godwin, J. G., Metcalfe, N., & Peach, J. V. 1983, *MNRAS*, 202, 113  
 Gómez-González, V. M. A., Mayya, Y. D., & Rosa-González, D. 2016, *MNRAS*, 460, 1555  
 Gómez-Velarde, G., García-Alvarez, D., & Cabrera-Lavers, A. 2016, in ASP Conf. Ser. 507, Multi-Object Spectroscopy in the Next Decade: Big Questions, Large Surveys, and Wide Fields, ed. I. Skillen, M. Balcells, & S. Trager (San Francisco, CA: ASP), 191  
 González-Serrano, J. I., Sánchez-Portal, M., Castañeda, H., et al. 2004, *ExA*, 18, 65  
 Gordon, A. C., Fong, W.-F., Kilpatrick, C. D., et al. 2023, arXiv:2302.05465  
 Gunn, J. E., Siegmund, W. A., Mannery, E. J., et al. 2006, *AJ*, 131, 2332  
 Hallinan, G., Dong, D., & Ravi, V. 2019a, *ATel*, 13018, 1  
 Hallinan, G., Ravi, V., Weinreb, S., et al. 2019b, *BAAS*, 51, 255  
 Hani, M. H., Sparre, M., Ellison, S. L., Torrey, P., & Vogelsberger, M. 2018, *MNRAS*, 475, 1160

- Harris, C. R., Millman, K. J., van der Walt, S. J., et al. 2020, *Natur*, **585**, 357
- Heintz, K. E., Prochaska, J. X., Simha, S., et al. 2020, *ApJ*, **903**, 152
- Hinton, S. R., Davis, T. M., Lidman, C., Glazebrook, K., & Lewis, G. F. 2016, *A&C*, **15**, 61
- Hunter, J. D. 2007, *CSE*, **9**, 90
- Jankowski, F., Bezuidenhout, M. C., Caleb, M., et al. 2023, arXiv:2302.10107
- Johnson, B. D., Leja, J. L., Conroy, C., & Speagle, J. S. 2019, Prospector: Stellar population inference from spectra and SEDs, Astrophysics Source Code Library, ascl:1905.025
- Kauffmann, G., Heckman, T. M., Tremonti, C., et al. 2003, *MNRAS*, **346**, 1055
- Kaur, B., Kanekar, N., & Prochaska, J. X. 2022, *ApJL*, **925**, L20
- Kewley, L. J., Groves, B., Kauffmann, G., & Heckman, T. 2006, *MNRAS*, **372**, 961
- Kirsten, F., Marcote, B., Nimmo, K., et al. 2022, *Natur*, **602**, 585
- Law, C. J., Butler, B. J., Prochaska, J. X., et al. 2020, *ApJ*, **899**, 161
- Leja, J., Johnson, B. D., Conroy, C., van Dokkum, P. G., & Byler, N. 2017, *ApJ*, **837**, 170
- Leung, C., Mena-Parra, J., Masui, K., et al. 2021, *AJ*, **161**, 81
- Li, Y., Zhang, B., Nagamine, K., & Shi, J. 2019, *ApJL*, **884**, L26
- Lin, H.-H., Lin, K.-y., Li, C.-T., et al. 2022, *PASP*, **134**, 094106
- Liu, X. 2020, *IJAA*, **10**, 28
- Lorimer, D. R., Bailes, M., McLaughlin, M. A., Narkevic, D. J., & Crawford, F. 2007, *Sci*, **318**, 777
- Macquart, J.-P., Prochaska, J. X., McQuinn, M., et al. 2020, *Natur*, **581**, 391
- Mahajan, S., Singh, A., & Shobhana, D. 2018, *MNRAS*, **478**, 4336
- Marcote, B., Nimmo, K., Hessels, J. W. T., et al. 2020, *Natur*, **577**, 190
- Massey, P., Strobel, K., Barnes, J. V., & Anderson, E. 1988, *ApJ*, **328**, 315
- Masters, K. L., Mosleh, M., Romer, A. K., et al. 2010, *MNRAS*, **405**, 783
- Masui, K. 2017, Bitshuffle: Filter for improving compression of typed binary data, Astrophysics Source Code Library, ascl:1712.004
- Mckinven, R. & CHIME/FRB Collaboration 2022, ATel, **15679**, 1
- McQuinn, M. 2014, *ApJL*, **780**, L33
- Mena-Parra, J., Leung, C., Cary, S., et al. 2022, *AJ*, **163**, 48
- Michilli, D., Masui, K. W., Mckinven, R., et al. 2021, *ApJ*, **910**, 147
- Michilli, D., Seymour, A., Hessels, J. W. T., et al. 2018, *Natur*, **553**, 182
- Moriya, T. J. 2016, *ApJL*, **830**, L38
- Mckinven, R., Gaensler, B. M., Michilli, D., et al. 2023, arXiv:2302.08386
- Nimmo, K., Hewitt, D. M., Hessels, J. W. T., et al. 2022, *ApJL*, **927**, L3
- Niu, C. H., Aggarwal, K., Li, D., et al. 2022, *Natur*, **606**, 873
- Oke, J. B. 1974, *ApJS*, **27**, 21
- Oke, J. B. 1990, *AJ*, **99**, 1621
- Piro, A. L., & Gaensler, B. M. 2018, *ApJ*, **861**, 150
- Piro, A. L., & Kulkarni, S. R. 2013, *ApJL*, **762**, L17
- Platts, E., Weltman, A., Walters, A., et al. 2019, *PhR*, **821**, 1
- Pleunis, Z., Good, D. C., Kaspi, V. M., et al. 2021, *ApJ*, **923**, 1
- Prochaska, J. X., Macquart, J.-P., McQuinn, M., et al. 2019, *Sci*, **366**, 231
- Ravi, V., Catha, M., Chen, G., et al. 2023, *ApJL*, **949**, L3
- Ravi, V., Catha, M., D'Addario, L., et al. 2019, *Natur*, **572**, 352
- Ruiter, A. J., Ferrario, L., Belczynski, K., et al. 2019, *MNRAS*, **484**, 698
- Ryder, S. D., Bannister, K. W., Bhandari, S., et al. 2022, arXiv:2210.04680
- Schawinski, K., Thomas, D., Sarzi, M., et al. 2007, *MNRAS*, **382**, 1415
- Schlafly, E. F., & Finkbeiner, D. P. 2011, *ApJ*, **737**, 103
- Scholz, P., Bogdanov, S., Hessels, J. W. T., et al. 2017, *ApJ*, **846**, 80
- Sharma, K., Somalwar, J., Law, C., et al. 2023, arXiv:2302.14782
- Simha, V., Weinberg, D. H., Conroy, C., et al. 2014, arXiv:1404.0402
- Spitler, L. G., Scholz, P., Hessels, J. W. T., et al. 2016, *Natur*, **531**, 202
- The HDF Group 2023, Hierarchical Data Format, version 5
- Thornton, D., Stappers, B., Bailes, M., et al. 2013, *Sci*, **341**, 53
- Tody, D. 1986, *Proc. SPIE*, **627**, 733
- Tody, D. 1993, in ASP Conf Ser. 52, Astronomical Data Analysis Software and Systems II, ed. R. J. Hanisch, R. J. V. Brissenden, & J. Barnes (San Francisco, CA: ASP), **173**
- Vanderlinde, K., Liu, A., Gaensler, B., et al. 2019, in Canadian Long Range Plan for Astronomy and Astrophysics White Papers, LRP2020 Vol. 2020 (Zenodo), **28**
- Virtanen, P., Gommers, R., Oliphant, T. E., et al. 2020, *NatMe*, **17**, 261
- Vorontsov-Vel'Yaminov, B. A., & Arkhipova, V. P. 1962, MCG, **C01**, 0
- Wielebinski, R., & Beck, R. 2005, Cosmic magnetic fields, Vol. 664 (Berlin: Springer)
- Wright, E. L., Eisenhardt, P. R. M., Mainzer, A. K., et al. 2010, *AJ*, **140**, 1868
- Yagi, M., Koda, J., Komiyama, Y., & Yamanoi, H. 2016, *ApJS*, **225**, 11
- Yao, J. M., Manchester, R. N., & Wang, N. 2017, *ApJ*, **835**, 29
- Zhang, G. Q., Yu, H., He, J. H., & Wang, F. Y. 2020, *ApJ*, **900**, 170